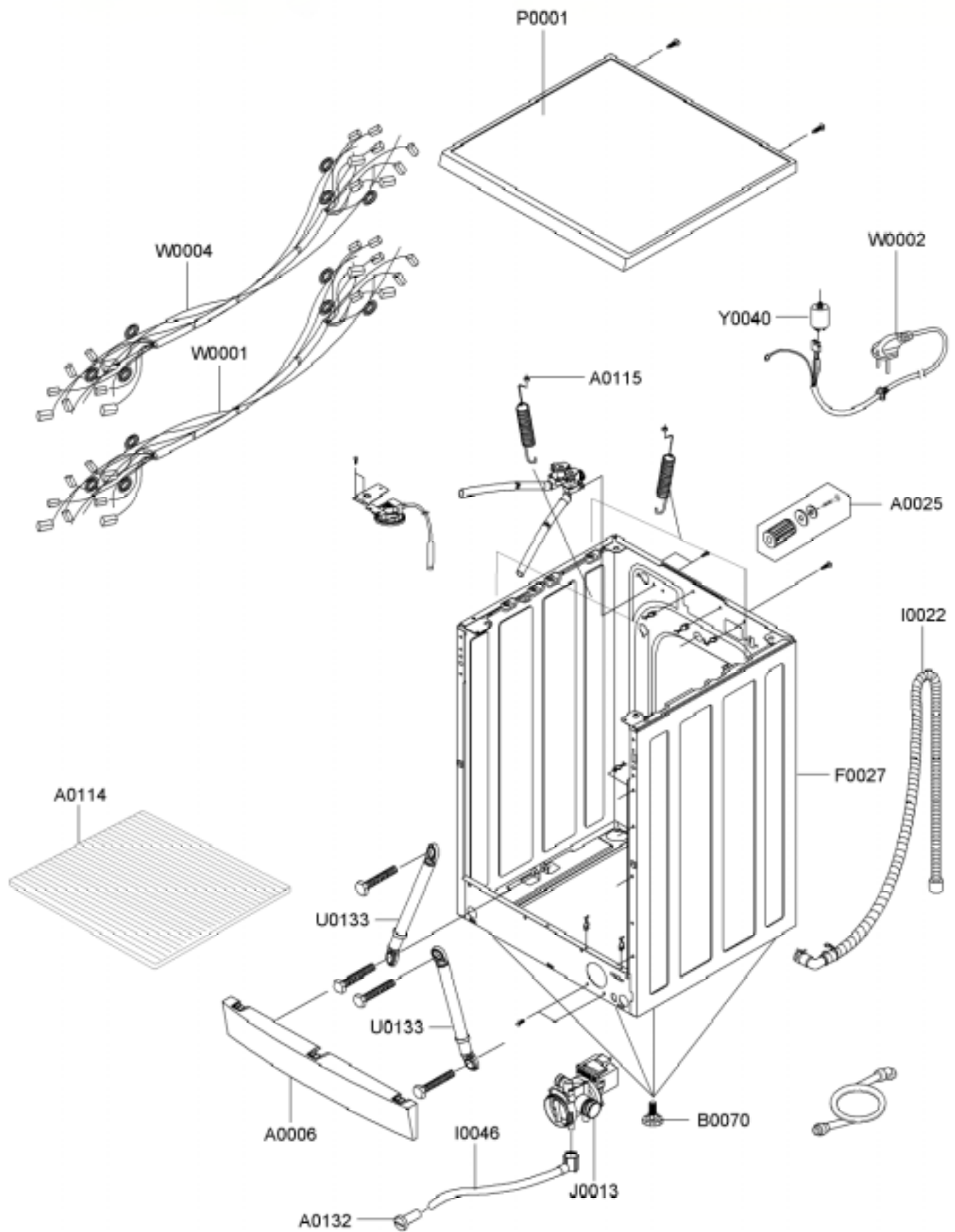


(TUB)



(CASE)

PART LIST

SVC LOC	CODE NO	DESCRIPTION	SPECIFICATIONQ	Q' TY	SA/SNA
A0004	DC63-00563C	COVER-FILTER	J1045A, PC (ABS), -, -, -, -, WH	1	SA
A0006	DC63-00578B	COVER-FRONT (L)	J1045A, PC (ABS), -, -, -, -, -	1	SA
A0025	DC97-02106A	ASSY-FIXER TUB	S1005J, SLIM-PJT	5	SA
A0034	DC60-40146A	BOLT-SPANER	-, -, OD36, T2. 5, L52, FE, FZY, -, P	1	SA
A0043	DC61-10688A	CAP-FIXER	SWF-P12, PP (TB53), -, -, -, WHT, -	5	SA
A0043	DC61-10688A	CAP-FIXER	SWF-P12, PP (TB53), -, -, -, WHT, -	1	SA
A0114	DC61-20235A	SHUTTER	DANPLA, PP (BB110), WHT,	1	SA
A0115	DC61-60180A	SLEEVE-PLUG	NYLON#6, SEW-720DR, -, -, NTR	3	SA
A0132	DC61-10673A	CAP-DRAIN	SWF-P12, PP (TB53), -, -, -, WHT, -	1	SA
A0328	DC64-00556B	PANEL-DRAWER	Q1636, ABS (HG-0760), -, -, -, -	1	SA
A0362	DC61-40081A	HOLDER-WIRE	DAWH-2NC, NYLON66, -, -, -, -, NTR	6	SA
B0070	DC97-00920C	ASSY-LEG	SEW-HW108, -	4	SA
C0002	DC97-11828C	ASSY-PANEL CONTROL	J1045IW1/XSA, 7. 0KG/EN	1	SA
C0041	DC64-00565A	BUTTON-PUSH	Q1636, ABS, -, -, WHT, TS-2 PJT	5	SA
C0044	DC64-00567A	BUTTON-PUSH (P)	Q1636V, ABS, -, -, WHT, TS-2 P	1	SA
C0045	DC64-00568A	BUTTON-WINDOW (L)	Q1636GW/XEU, ABS, -, -, -, T	1	SA
C0046	DC64-00566A	BUTTON-WINDOW (R)	Q1636GW/XEU, ABS, -, -, -, T	1	SA
C0058	DC64-00653A	DOOR-LOCK S/W	DA, PA6-G, -, H82, W50, -, BLK, 2	1	SA
C0075	DC64-00558A	KNOB-ENCODER	Q1636, ABS (HG-0760), -, -, -, -	1	SA
C0075	DC64-00559E	BUTTON-ENCODER	Q1636V, ABS, -, -, WHT, START-	1	SA
D0003	DC61-00932A	HINGE-DOOR	Q1636GW/XEU, ZNDC, -, -, -, -, TS	1	SA
D0046	DC97-05111A	ASSY-LEVER DOOR	Q1636GW/XEU, TS-2 PJT	1	SA
D0061	DC64-00920C	DOOR-GLASS	S, P, F MODEL (LOW), GLASS, T5. 0, H	1	SA
D0075	DC64-00561A	HANDLE-DOOR	Q1636, ABS, -, -, -, -, WHT, TS-2 P	1	SA
D0076	DC64-00564A	HANDLE-PIN	Q1636GW/XEU, STS, -, -, -, -, TS-	2	SA
D0081	DC61-00931A	HOLDER-GLASS	Q1636, PP (TB53), -, -, -, WHT, TS	1	SA
F0027	DC99-00557A	ASSY-PAINT FRAME	J1045, J-PJT/WHT/SSEC	1	SA
F0064	DC97-05133A	ASSY-FRAME FRONT	Q1636GW/XEU, TS-2 PJT	1	SA
F0065	DC97-05134D	ASSY-FRAME PLATE (U)	B1445AVGW/YLP, B-PJT/	1	SA
I0003	DC62-10289C	HOSE-WATER (C)	RUSSIA, PVC+NYLON, ID10. 3, -	1	SA
I0022	DC97-00139F	ASSY-HOSE DRAIN (O)	DRUM, PP/L1970/CHINA	1	SA
I0030	DC62-10278A	HOSE-HANGER	-, PP (JS20), -, -, -, -, NTR, -	1	SA
I0043	DC62-10303A	HOSE-AIR	-, EPDM, ID24, -, -, L130, BLK, SWF-P1	1	SA
I0046	DC62-10302A	HOSE-DRAIN	SWF-P12, EPDM, ID5. 5, -, -, L220, B	1	SA
I0047	DC61-01136A	CLIP-HOSE	F1235J, SK5, T1. 0, WHT, ID14. 8	1	SA
I0047	DC61-01136A	CLIP-HOSE	F1235J, SK5, T1. 0, WHT, ID14. 8	4	SA
J0013	DC90-11110K	ASSY-PUMP DRAIN	SWF-P12, 220V~240V/50Hz	1	SA
J0019	DC61-10652B	CASE-PUMP	PP (5113MF6), SW-5C1P, -, -, -, WHT,	1	SA
J0020	DC63-00443B	COVER-PUMP	SEW-HR125, PP, T1. 3, -, -, -, -, WHT	1	SA
J0025	DC31-30008D	PUMP-DRAIN	SW-70XP, 220/240V, 50Hz, SYNCHRO	1	SA

PART LIST

SVC LOC	CODE NO	DESCRIPTION	SPECIFICATIONQ	Q' TY	SA/SNA
P0001	DC97-07874G	ASSY-COVER TOP	WD-B1265C/XSH, 6.0KG/CLONE	1	SA
P0036	DC61-10687B	CAP-RINSE	SEW-HW108, ABS, -, -, -, GRN, -	1	SA
R0001	DC97-01463D	ASSY-DRUM	SEW-HW957, 1200RPM/7.5KG	1	SA
R0007	DC97-05103B	ASSY-FLANGE SHAFT	SEW-HW107, ALDC+SM45C	1	SA
R0017	DC97-02051A	ASSY-DRUM LIFTER	DRUM, LIFTER+FIXER ASSY	3	SA
R0019	DC97-06572E	ASSY-HOUSING DRAWER	BIG-WASH, P2-PJT, 2WAY	1	SA
R0019	DC97-03244A	ASSY-HOUSING DRAWER	B1215J, FOR/2WAY	1	SA
R0027	DC97-00731A	ASSY-SENSOR PRESSURE	P1091, S-PRE+BRACKET+	1	SA
R0030	DC91-12078C	ASSY-WIRE DIAPHRAGM	TS-2, Q1636, FE, SW-C, Z	1	SA
R0036	DC61-30348A	BODY-DRAWER	-, PP, -, -, -, -, -	1	SA
R0045	DC61-00027A	CAP-DRAWER	COVER HOT-HOLE/P12, NBR, -, -, L1	1	SA
R0106	DD60-50018A	NUT-FLANGE	-, M5XP0.8, FZY, MSWR10, -	2	SA
R0147	6011-001421	BOLT-FLANGE	M7, L61 (29.4), ZPC (YEL), SWRCH1	5	SA
R0155	DC64-00570A	HANDLE-DRAWER	Q1636GW/XEU, ABS (HG-0760), -	1	SA
R0158	DC62-10305A	HOSE-DRAWER TUB	-, EPDM, ID35, -, -, L158, BLK	1	SA
R0158	DC67-00051D	HOSE-DRAWER	S1093~S6093, EPDM, -, -, -, -, BLK	0.46	SA
R0159	DC61-70216E	SPRING-HANGER	SEW-HW107, HSWR, CD3.5, -, -, L	2	SA
U0003	DC60-60044A	WASHER-PLAIN	-, ID10.5, OD30, T3, -, STS304	2	SA
U0003	DC60-60044B	WASHER-PLAIN	SBC, ID8.4, OD30, T3, -, -, -	5	SA
U0005	DC60-60040A	WASHER-NYLON	-, ID10.5, OD32, T2, -, PBSP-1/2	3	SA
U0005	DC60-60040A	WASHER-NYLON	-, ID10.5, OD32, T2, -, PBSP-1/2	5	SA
U0010	DC66-10176C	PULLEY	DRUM (7.5KG), ALDC, -, -, -, -, ID12.5	1	SA
U0012	DC61-01447A	BRACKET-HEATER	V7, STS430, T0.6mm, W30mm, L1	1	SA
U0015	DC31-00002F	MOTOR-DRUM	HXGM4I, SFW-P12, -, 50Hz, WASHING	1	SA
U0016	DC62-00160A	SEAL-OIL	TS0-PJT, NBR (SD35), BLK, -, -, -, JIN	1	SA
U0018	DC47-00007A	HEATER	-, DRUM-MDL, SUS316L, -, -, 230V, 20, -	1	SA
U0023	DC61-00201A	BRACKET-NUT	SBHG-R, P1291, T3, -, -, -, NO-PAI	1	SA
U0023	DC61-40348B	BRACKET-NUT	SBHG-R, P1291, T3, -, -, -, NO-PAI	5	SA
U0023	DC61-40348B	BRACKET-NUT	SBHG-R, P1291, T3, -, -, -, NO-PAI	2	SA
U0029	DC61-20219E	DOOR-DIAPHRAGM	SEW-HW107, EPDM, -, -, -, GR	1	SA
U0030	DC61-30346D	TUB-FRONT	SEW-810DR, FRPP (FRPP15%) SAMBACK	1	SA
U0033	DC62-10304A	HOSE-FILTER TUB	-, EPDM, ID65, -, -, L151, BLK	1	SA
U0035	DC62-20311A	VANE-CHECK	SWF-P12, EPDM, -, -, BLK, -	1	SA
U0038	DC91-12077D	ASSY-CLAMP DIAPHRAGM	WF-B853/XSC, SWF-12/	1	SA
U0078	DC97-10977J	ASSY-SEMI TUB BACK	J1045, FRPP (GR15%)	1	SA
U0086	DC67-00079A	WEIGHT-BALANCER (F)	SEW-HW107, FE, -, -, -, RE	1	SA
U0095	6602-001072	BELT-TIMING GEAR	POLYURETHAN, L1270, J5, ME	1	SA
U0133	DC66-00421A	DAMPER-SHOCK	F-PJT, FRICTION-DAMPER, -, -, -	2	SA
U0307	DC61-00041A	CUSHION-MOTOR	SWF-6V, BUTYL, -, -, -, ID16/OD	1	SA
U0320	6011-001497	BOLT-HEX	M7, L112.5 (44), ZPC (YEL), SWRCH18A	1	SA

PART LIST

SVC LOC	CODE NO	DESCRIPTION	SPECIFICATIONQ	Q' TY	SA/SNA
U0320	6011-001499	BOLT-HEX	M8, L104. 5 (50), ZPC (YEL), SWCH10AK	2	SA
U0320	DC60-40144A	BOLT-HEX	M10, L41, ZPC2 (YEL), SM10C/DAMPER	2	SA
U0328	DC62-40183A	PACKING-TUB	SWF-P12, EPDM, -, -, -, -, BLK, -	1	SA
U0353	DC61-60359E	CLAMPER HOSE	F1235AS/F1035AS, -, -, ID7. 8, Y	1	SA
U0353	DC61-60359G	CLAMPER HOSE	F1235AS/F1035AS, -, -, ID37. 2,	1	SA
U0353	DC61-60497A	CLAMPER HOSE	SWF-P12, HSWR, -, ID70/OD75. 8,	1	SA
U0353	DC61-60359E	CLAMPER HOSE	F1235AS/F1035AS, -, -, ID7. 8, Y	1	SA
U0353	DC61-00133A	CLAMPER HOSE	P1291, PP (BJ-730), ID24. 5, OD2	1	SA
U0355	DC66-60153A	WEIGHT-BALANCER	SWF-P12, CONCRETE, UPPER,	1	SA
U0355	DC67-00065A	WEIGHT-BALANCER	TS0-PJT, CONCREET, -, -, -, -	1	SA
U0359	DC62-00066A	FILTER-CASE	-, PP, -, -, -, -, BLK/SW90V2	1	SA
U0360	DC61-60499B	CLIP-TUB	HSWR, P1291, -, NO/PAINT,	6	SA
U0360	DC61-60520A	CLIP-TUB	SK5, SWF-P12, -, PLATE-TYPE,	2	SA
W0001	DC96-00841A	ASSY-WIRE HARNESS	B1245A, SUB/CLONE-PJT	1	SA
W0002	DC96-00037L	ASSY POWER CORD	AP3, -, 250V 10/16A, 1500m	1	SA
W0004	DC96-00814A	ASSY-M. WIRE HARNESS	JUMP, J1045	1	SA
W0010	DC63-00651A	COVER-HEATER	Q1657TGW/XEU, GI, TO. 4, -, -, -,	1	SA
W0031	DC65-60118J	BAND-RING	-, HSWR, -, -, -, YEL, PI2. 0/ID23	1	SA
W0031	DC65-60118K	BAND-RING	HSWR, YEL, PI2. 0, OD22, ID18	1	SA
W0032	DC62-00024F	VALVE-WATER	B1215J, NYLON66/250TRMN, -, -, N	1	SA
Y0040	DC29-00009A	FILTER-EMI	DFC-2715R, P/PV/P2, 250V, 15A, PI	1	SA
Z0006	DC97-02412B	ASSY-BOLT	SWF-P12, WEIHGT (L) /M8*L147	2	SA
Z0006	DC97-02412C	ASSY-BOLT	SWF-P12, WEIHGT (U) /M8*L215	1	SA
Z0006	DC97-02412H	ASSY-BOLT	Q1657, -	1	SA
Z0006	DC97-02412A	ASSY-BOLT	SWF-P12, MOTOR, M8*L62	2	SA
	MFS-J1045-02	ASSY PCB PART (M)	MFS-J1045-02	1	SA