

Model type:  
**AL128DAUS**

Commercial code:  
**F024904**

## General notes

### Technical Documentation guidelines

---

---

You can find herewith some generic information to simplify consulting of technical documentation:

1. Models of same range share the same exploded views, which report the richest set of spare parts: generally, a model does not necessarily have a related spare part for each particular shown on exploded views.
2. Some spare parts can not be represented directly on the exploded views (instruction booklets, specific kit, etc...). You can find those codes in the spare parts list with the same reference of particular where spares are installed or with references 099, 999. Instruction booklets, once managed, appear with 000 reference.
3. On the higher right site of each exploded view there is a serial number which indicates the beginning of the production of certain range: some models might have more than an exploded view for a given category, each distinguished by a different serial no. and linked to another spare parts list, In this case, serial no. is required to supply the right spare part code. Exploded view to be considered is the one with a more recent serial no. but previous than the one of the model that needs assistance.
4. Exploded views might require further updates even after publishing. Addition of new spares will go on following the already existing numeration references. Revision number of an exploded view is shown into last four digits of serial number into upper right hand corner.
5. The spare parts list associated to an exploded view shows related codes of spares managed for a certain model; for each spare part other informations are available:  
  
REF: reference no of spare into a table; SUBSTITUTE: list of spare(s) which can replace a code but that keeps same functional characteristics  
  
INDUSTRIAL CODE: list of variables of a model (shown into model label) where such spare is used; NOTICE: code of information(s) to refer to complete technical intervention, track for changes or to find correct spare part code.
6. Some notices, into a same section are generic therefore cannot be directly linked to a spare part. In order to assist a model in the best way as possible, it is helpful to pay attention to all notices and constantly verify documentation updates
7. Technical documentation cover shows model name and its commercial codes



1140110

Spare parts list

Ref.	Code	From	To S/N	Substitute	Description	Notice	Industrial
000	C00084654				user instructions booklet		
001	C00064500 (482000070304)			1 x C00090582 (482000070307)	cabinet white	n1040276	
				1 x C00116622 (482000080484)			
001	C00090582 (482000070307)			1 x C00116622 (482000080484)	cabinet white	n1040230	
002	C00065186 (482000070103)			1 x C00091882 (482000072347)	pivot pin - drawer front 108.5x5 mm ab		
003	C00064784 (482000075336)				bracket - timer support		
004	C00084655				knob timer disc		
005	C00064506 (482000075305)				wash timer knob white kit		
006	C00064509 (482000069980)			1 x C00117965 (482000028996)	pushbutton white 0/i		
007	C00064512 (482000027157)				temperature control knob - white		
007	C00082822 (482000076862)				delay-timer knob (kit) white 27		
008	C00064507 (482000075306)				pushbutton white		
009	C00084653				control panel + handle		
010	C00082825 (482000070475)			1 x C00116624 (482000028917)	door frame assy		
011	C00065250 (482000075380)			1 x C00116580 (482000022866)	door handle kit		
012	C00064505 (482000069973)			1 x C00116552 (482000028902)	plinth white		
013	C00050320 (482000070430)			1 x C00084810 (482000070432)	foot - rear m 8 h = 41 mm		
				1 x C00110512 (482000079588)			

014	C00059869 (482000027089)		spring for foot d =11 mm h = 21 mm		
015	C00046666 (482000074292)		collar for drain hose		
016	C00065185 (482000022669)		bolt m4,5 x 8		
017	C00064541 (482000027163)		outer door hinge assembly	n1040349	
018	C00012687 (482000072661)		self-tapping screw hi-lo 3,5x13 zn t10		
018	C00019846 (482000072833)		civata t 1/2 t m4x12		
018	C00074149 (482000076283)	1 x C00256725 (482000030460)	bolt m4x9 tesrfr		
019	C00002497 (482000072582)		nut m4x3,2x7		
020	C00064899		blanking plate-rear(test plug)	n1040208	
020	C00084817 (482000027647)		blanking plate-rear(test plug)		
021	C00064539 (482000075313)		hinge plate door		
022	C00003144 (482000072598)		blanking plug 11mm		
022	C00065871 (482000075423)		blanking plug		
023	C00064501 (482000069753)	1 x C00099313 (482000069754)	rear cover - white		
		1 x C00116923 (482000028929)			
024	C00064511 (482000075307)		worktop - white		
025	C00046667 (482000074293)		wiring stop	n1040282	80249040000

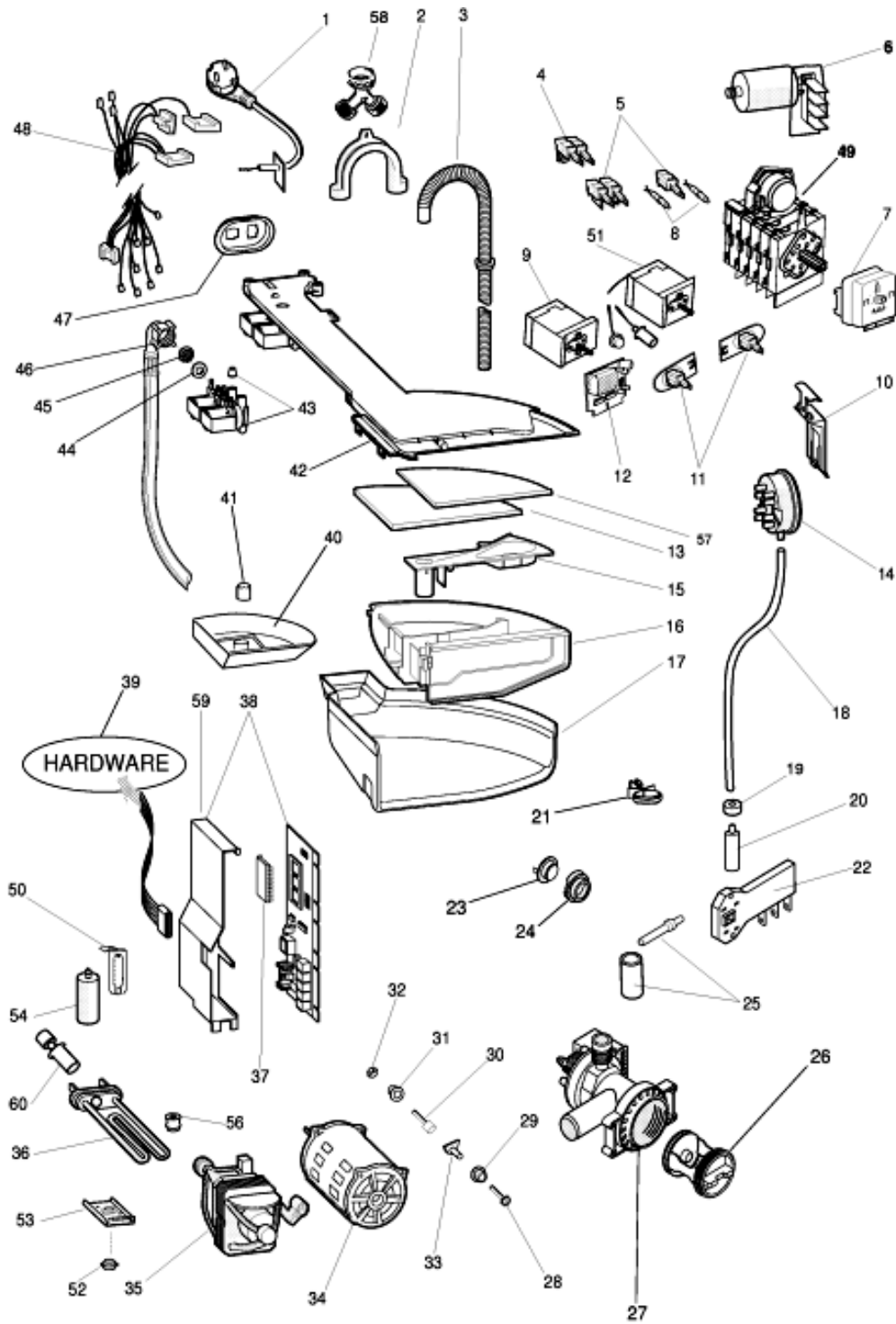
1140110

Spare parts list

Ref.	Code	From	To S/N	Substitute	Description	Notice	Industrial
025	C00064550 (482000027167)				drain hose holder		
025	C00064551				wiring stop		
025	C00091904 (482000077694)				cable clamp hose		80249040030
099	C00066091 (482000070483)			1 x C00077411 (482000027417)	washer packing		
099	C00074922 (482000070485)			1 x C00077411 (482000027417)	spacer l= 79.5		
099	C00077411 (482000027417)				transit bolts kit (1 screw + 1 spacer)		

1140310

Exploded views



1140310

1140310

Spare parts list

Ref.	Code	From	To S/N	Substitute	Description	Notice	Industrial
001	C00066283				supply cable (00115) l=2550mm arg.	n1040267	
001	C00089918				supply cable 3 x 1,0 l=2550mm au		
002	C00019902 (482000072836)				plastic -u- to make drain hose hook		
003	C00027466 (482000026108)				drain hose - to sink l=1860mm		
005	C00075445 (482000076388)				push button switch na	n1040229	
						n1040246	
005	C00080662 (482000027474)				push button switch on-off spade		
005	C00088394 (482000027758)				push button switch na idc		
006	C00064559 (482000027170)				radio interference suppressor		
007	C00064555 (482000027168)				programme select switch		
007	C00083916 (482000027609)				programme selector (idc elbi) (hl)		
008	C00057635 (482000075032)				red pilot lamp 230v ariston	n1040229	
						n1040255	
008	C00074501 (482000076316)				pilot light red 12 v led ariston	n1040229	
008	C00086663 (482000077188)				pilot light red 12 v rast 2.5		
008	C00089025				pilot light red 230v ra2,5		
010	C00064537 (482000075312)				support - pressure switch		
011	C00057242 (482000026993)				potentiometer 8 pos.		

011	C00085195 (482000077052)	1 x C00143096 (482000081938)	potentiometer 8 pos. idc rast 2,5		
013	C00065733		support - programme guide tbc		
014	C00080666 (482000076673)		pressure switch 1 l. + antiowerflow	n1040229	80249040000
014	C00088393 (482000027757)		pressure switch 1 l. + antiowerflow	n1040282	80249040000
014	C00092262 (482000071026)	1 x C00110327 (482000028461)	pressure switch 1 l. + antiowerflow		80249040030
015	C00046154 (482000026597)		additive cover		
016	C00046148 (482000074265)	1 x C00281253 (482000031503)	soap dispenser drawer (rotary)		
017	C00064529 (482000027160)		dispenser body (hl)	n1040282	80249040000
017	C00092176 (482000027910)		dispenser body		80249040030
018	C00041785 (482000073972)	1 x C00144077 (482000022979)	air trap hose 540 mm.	n1040282	80249040000
018	C00092170 (482000069789)	1 x C00041785 (482000073972)	pipe pressostat l= 470mm. evo ii		80249040030
019	C00019755 (482000026008)		anti-vibration bush (foam)		
020	C00064532 (482000070284)	1 x C00092173 (482000027909)	air trap	n1040282	80249040000
020	C00092173 (482000027909)		air trap x oko		80249040030
021	C00064530		clip-pressure switch tube		
022	C00011140 (482000025944)		door interlock		
022	C00056511		self-tapping screw 8p x 12,7 zc		

1140310

Spare parts list

Ref.	Code	From	To S/N	Substitute	Description	Notice	Industrial
023	C00053573 (482000026872)				temperature sensor (hl)		
024	C00014917 (482000025959)				grommet - thermostat		
024	C00020181 (482000026014)				blank grommet - thermostat		
025	C00085194 (482000022732)				door interlock		
026	C00045027 (482000022624)				pump filter kit		
027	C00080667 (482000027477)			1 x C00282341 (482000023190)	self cleaning pump	n1040282	80249040000
027	C00092264 (482000027915)			1 x C00309709 (482000023505)	self cleaning drain pump (hl)		80249040030
028	C00074152				bolt m6x30		
028	C00084029 (482000076936)				bolt motor m6x34		
029	C00074151 (482000076284)				rubber bush - motor mount		
030	C00074153				spacer motor support l= 187 mm		
032	C00040932 (482000073863)				self locking nut m6		
035	C00043430 (482000067931)			1 x C00097257 (482000069354)	tacho generator black for ice motor		
035	C00047317 (482000067876)			1 x C00196539 (482000023015)	brush for motor (ice)940n2101/940n1i01		
035	C00074221 (482000027285)				motor (hl)	n1040258	
036	C00064556 (482000027169)				heat element+cut-out 1700w/230v (hl)	n1040300	80249040000
036	C00066086 (482000022672)				heating element+t cut-out 1700w (hl)		80249040030
037	C00084651 (482000076982)			1 x C00092653 (482000077844)	eprom al128daus 80249040000 mat.20513000	n1040282	80249040000

037	C00092653 (482000077844)		eeeprom al128daus software 28249040031	80249040030
038	C00080668 (482000071300)	1 x C00093153 (482000022772)	module (less eeeprom) sw 2.01	n1040229
038	C00089416 (482000071304)	1 x C00093158 (482000077952)	module (less eeeprom) idc w.d	
039	C00066055 (482000034034)	1 x C00077454 (482000070241)	housing serieale	
039	C00066292 (482000027229)		insulated tweezers	
039	C00084943 (482000032689)	1 x C00099862 (482000028343)	serial cable lb2000 - pc	n1040211  n1040317
042	C00083738		hopper cover 2e 4u 2ev	
043	C00064534 (482000022667)		seal - dispenser to valve	
043	C00066517		solenoid valve hot 1 way 5.5 lt	
043	C00080664 (482000027476)		3 way cold fill valve solenoid	
044	C00005572 (482000025916)		sealing washer-mains inlet hose	
045	C00005781 (482000025917)		inlet hose filter	
046	C00003070 (482000022577)	1 x C00314116 (484000001132)	mains inlet hose cold 25c 10bar 1,5m roh	
046	C00009415 (482000070317)	1 x C00144176 (482000022001)	mains inlet hose hot 1500mm	
047	C00066514 (482000075480)		electrovalve support 2 ev	
048	C00083739		wiring	n1040276

1140310

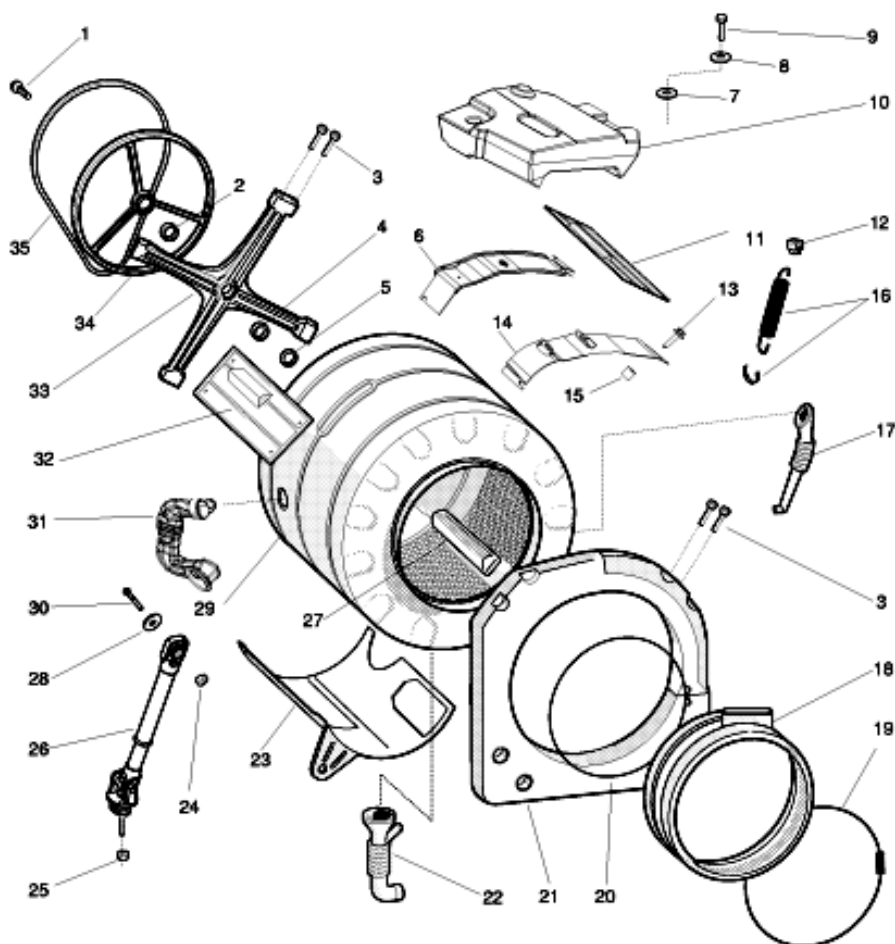
Spare parts list

Ref.	Code	From	To S/N	Substitute	Description	Notice	Industrial
048	C00089894				wiring idc	n1040276	
056	C00058523 (482000027043)				pillar retainer-heating element		
057	C00084652				reading desk 14802174800		
058	C00009416 (482000025932)				y junction (water inlet fork)		
059	C00075941				bracket for module		
062	C00092412 (482000027923)				hose clamp		
063	C00008612				tube clamp 34,6-36,4		

1180230

Exploded views

Matr. 10205.0001



1180230

1180230

Spare parts list

Ref.	Code	From	To S/N	Substitute	Description	Notice	Industrial
001	C00064786 (482000070068)			1 x C00143260 (482000029741)	bolt m8x23 torx tefl		
002	C00013563 (482000025948)				bearing fits light/heavy spider 25 x52		
003	C00051737 (482000074649)				torx m8 x 27 dri-loc screw		
003	C00064785 (482000075337)			1 x C00193879 (482000030161)	bolt m8x22 tb6lt		
004	C00002591 (482000025908)				bearing 20x47x14		80249040030
004	C00044765 (482000026536)				bearing	n1040300 n1040371	
005	C00082696 (482000022717)				standard bearing oil seal (35x62x75mm)	n1040300 n1040371	
005	C00096186 (482000028142)				standard oil seal	n1040300 n1040326	80249040030
006	C00080651 (482000069774)			1 x C00032847 (482000026227)  1 x C00114387 (482000080107)  1 x C00114390 (482000080109)  1 x C00145190 (482000030002)	rear support		
007	C00075326				washer m8.5x35x3		
008	C00055018 (482000074893)				washer m8		
009	C00014342 (482000072693)				bolt m8x75 te		

010	C00080659 (482000070291)	1 x C00087811 (482000027740)	upper counterweight 8,7 kg		
011	C00080761 (482000070400)	1 x C00064517 (482000075310)	tank cradle channel-top dx wd dx/sx-aml		
012	C00064515 (482000075309)		anchorage pad - suspension spring		
013	C00080652		bolt m8x36 tefl. zig. p/p		
014	C00080650 (482000076671)		front support		
015	C00080653		spacer		
016	C00074182 (482000069310)	1 x C00064502 (482000022666)	spring ring		
016	C00080660 (482000076672)		suspension spring - tank		
017	C00064536 (482000070282)	1 x C00086430 (482000027690)	hose - detergent recovery		
018	C00080762 (482000027478)		door seal	n1040291	
018	C00094091 (482000078033)		door seal	n1040291	80249040030
019	C00064546 (482000027165)		clamping ring - door seal front		
020	C00064547 (482000027166)		bellows clamp (tank front)	n1040291	
020	C00092155 (482000022769)		door seal- rear retainer		80249040030
021	C00064516 (482000070293)	1 x C00092178 (482000027911)	front counterweight	n1040291	
021	C00092178 (482000027911)		front counterweight		80249040030
022	C00064531 (482000027161)		hose tank to filter	n1040282	80249040000

1180230

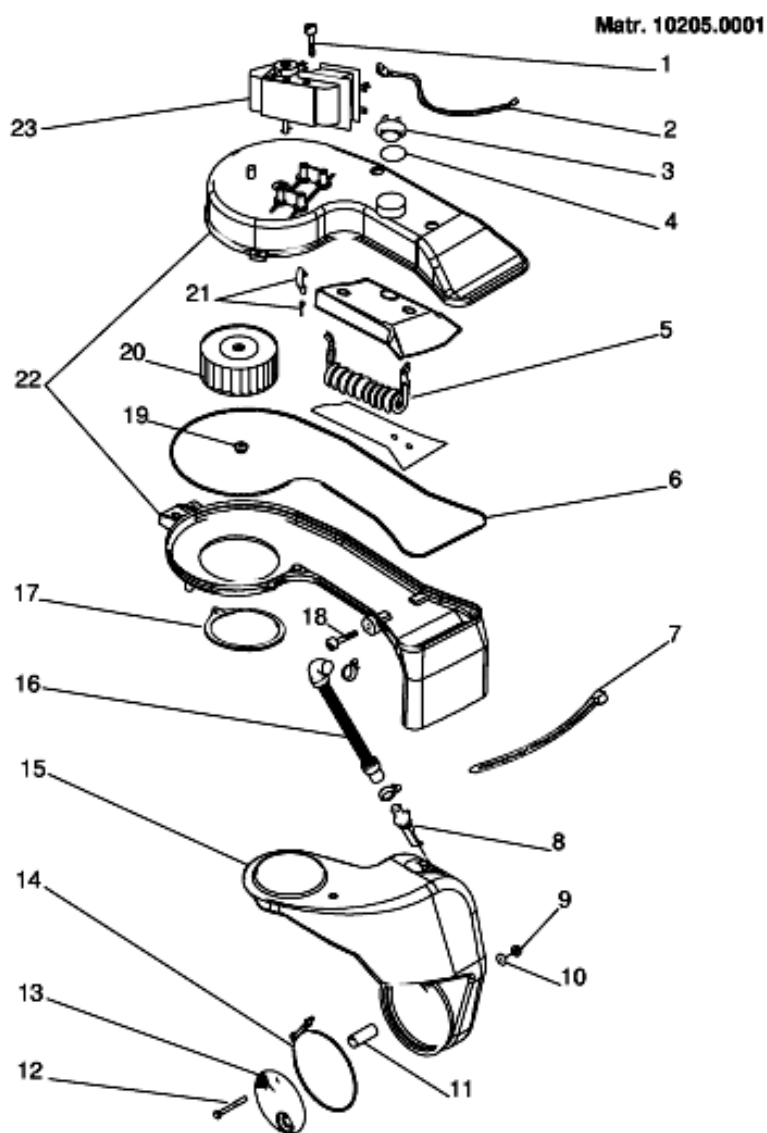
Spare parts list

Ref.	Code	From	To S/N	Substitute	Description	Notice	Industrial
023	C00064518 (482000069732)			1 x C00093848 (482000078005)	cradle outer- set	n1040286	
023	C00093848 (482000078005)				cradle outer- set	n1040325	80249040030
024	C00030443 (482000067864)			1 x C00047136 (482000067865)	nut romob m8		80249040030
				1 x C00144571 (482000082230)			
024	C00030680 (482000067870)			1 x C00040130 (482000073838)	nut m 10	n1040286	
025	C00065152 (482000075376)				nut romob m6x22x1,5		
026	C00066184 (482000075439)				shock absorber 120 n	n1040230	
026	C00086372 (482000027686)				shock absorber 120 n (11105) 10,1mm	n1040286	
026	C00303583 (482000023459)				kit shock absorber 120 n 8,15 mm		80249040030
027	C00064789 (482000075338)			1 x C00268109 (482000023096)	lifter - extractable		
029	C00080661 (482000067810)			1 x C00094097 (482000078034)	outer- set 46 l.##	n1040282	80249040000
				1 x C00094280 (482000028006)		n1040291	
						n1040300	
029	C00092263 (482000067811)			1 x C00094097 (482000078034)	outer- set 46 l. cv5-b5 ld	n1040291	80249040030
				1 x C00094280 (482000028006)		n1040300	
						n1040371	
029	C00094281 (482000067812)			1 x C00094275 (482000078051)	outer- set 46 l. evo ii	n1040300	80249040030
				1 x C00094280 (482000028006)		n1040371	

030	C00030446 (482000073311)		bolt m10 x 45 zntr	n1040286	
030	C00093750 (482000077992)		bolt zink m8x40		80249040030
031	C00080654 (482000027472)		hose dispenser to tank	n1040282	80249040000
032	C00064517 (482000075310)		tank cradle channel-top left right wm		
033	C00074213 (482000076297)		bearing spider assembly	n1040300	
				n1040371	
033	C00096077 (482000028136)		bearing spider assembly	n1040300	80249040030
034	C00074211 (482000027284)		drum pulley d=210 mm h=20 mm		
035	C00074218 (482000022676)		belt (1046-1051mm h8)		
036	C00092411 (482000077739)	1 x C00094908 (482000022783)	hose clamp		
037	C00092174 (482000077729)		hose tank to filter with oko ball		80249040030
039	C00091148 (482000070106)	1 x C00094908 (482000022783)	clamp d=79 mm		
040	C00092273 (482000027917)		hose dispenser to tank	n1040282	80249040030
099	C00033026 (482000073442)	1 x C00292523 (482000031990)	ambljgon grease ta 100 gr.		

1180410

Exploded views



1180410

1180410

Spare parts list

Ref.	Code	From	To S/N	Substitute	Description	Notice	Industrial
001	C00056028				screw torx m4 x 46 bz		
001	C00087921 (482000077273)				screw amsp m3.5x30t.e.(s/n 30617.0001)		
002	C00080775 (482000070183)			1 x C00199364 (482000030281)	thermal cut-out cable		
003	C00080767 (482000027480)				temperature sensor (hl)		
004	C00080768 (482000027481)				o-ring d= 27 x 23,5 x 1,78 wd		
005	C00080765 (482000027479)				dryer heating element 1200w) (hl)		
006	C00032847 (482000026227)				blower manifold seal		
007	C00033210 (482000072445)				hose clamp fastex 350 mm x 7.8 mm		
008	C00032845 (482000026226)				restrictor seat		
009	C00080960 (482000076699)				self blocking nut m5		
010	C00080959 (482000076698)				connection gasket		
011	C00080771 (482000076682)				clip		
012	C00080773 (482000076683)				fixing screw for lint filter		
013	C00080772 (482000070407)			1 x C00143947 (482000082055)	lint filter		
				1 x C00143949 (482000029832)			
014	C00080774 (482000076684)				hose clamp		
015	C00080770 (482000070406)			1 x C00143947 (482000082055)	steam condenser		
				1 x C00143949 (482000029832)			

016	C00080769 (482000027482)		hose electrovalve condenser l=63,6 cm
017	C00032844 (482000073434)	1 x C00255433 (482000030412)	seal - condenser / tank
018	C00038358 (482000026357)		bolt m8x16 (dry loc)
019	C00032972 (482000026229)		blower fixing nut
020	C00021885 (482000072901)		blower fan
020	C00080658 (482000027473)		blower fan for motor (087920- 097339)
021	C00054790 (482000072543)		screw trilob m5 x 16 tcb t.e. st
022	C00054789 (482000068588)		blower manifold kit
022	C00087919 (482000077272)		blower manifold kit s/n30617.0001
023	C00080766 (482000076681)		dryer fan motor 230v 50hz (blower) (hl)
023	C00087920 (482000070193)	1 x C00098711 (482000078591)	motor dryer 230v 50hz s/n 30617.0001

## Notices

## n1040061: Trouble-shooting.

-----  
Intervention procedure on 2000 washing machines

## 1. Reading the error code

The fault on the appliance is signalled via:

1. the continuous rotation of the selector knob
2. the action, for the first 4', of the electrovalve and the drain pump
3. the door becomes unlocked
4. the led flashes:

the number of flashes indicates the fault code; the code should be read as follows:

- each fast flash (2/3 flashes of the led very close together) represents one code value
- the fault code is evaluated by counting the number of flashes occurring at 3/4" intervals from one another
- stop counting when the washing machine waits the equivalent of approximately 8/9" between flashes
- the procedure is repeated by the appliance cyclically

E.g.: F03

(FIGURE NT 00)

## 2. Autotest

Should the washing machine not be signalling an error, you can check it using a serial key and using a particular autotest cycle, which is to be activated as follows:

1. bring the washing machine to reset position (coloured ball) for at least 5" and wait until the led flashes on reset mode
2. insert the hardware key into the serial outlet
3. position the switch situated on the key in TEST position
4. wait for the door to lock and for the selector to start turning
5. position the switch situated on the key in PC position

the appliance will carry out the following cycle:

- selector moves on up to position 0 (12h if the appliance has a delay, programme 1 if it has no delay)
- loads the wash electrovalve for approx. 10"
- loads the pre-wash electrovalve for approx. 10"
- loads the wash electrovalve and pre-wash electrovalve at the same time until the pressure switch is on full
- heats up to 30° and moves the motor in both directions
- selector moves on for 9 notches
- drains and spins
- the selector knob stops on one of the reset positions
- STOP

The test cycle can be repeated as many times as you wish following the same procedures  
The test cycle can be interrupted by positioning the selector knob on one of the reset positions.

### 3. Intervention in the event of a Fault

In the event of a fault, the procedure to go by is as follows:

F01: Triac Short circuit

Overhaul CNE

Replace Card

F02: Blocked Motor, Short-circuited/Open Tachometry

Overhaul CNE

Overhaul Motor connector

Control CNE Continuity/Motor Connector

Control Motor Windings

Control Tachometry Windings

Replace Card

F03: Open/Short-Circuited NTC Found

Overhaul CNA

Control NTC Wiring

Control CNA/NTC Wiring Continuity

Replace NTC

Replace Card

F04: Overflow and Pressure Switch Empty found at the same time (Pressure Switch stuck on Empty)

Overhaul CN1

Overhaul Pressure Switch Contacts

Control CN1/Pressure Switch Continuity

Replace Pressure Switch

Replace Card

F05: Blocked Pump or Pressure Switch stuck on Empty Found

Overhaul CNF (pump connector)

Overhaul Pump Connector

Control Pump Filter

Control Pump Windings

Change Pump

Replace Card

F06: Selector Error (a part no. cannot be found)

Overhaul CND (selector connector)

Overhaul Selector Connector

Control Selector/CND Continuity

Control Selector Motor

Replace Selector

Replace Card

F07: Resistance Relay Stuck

Overhaul CN1

Overhaul CN1

Overhaul Resistance Connection

Replace Card

Overhaul Resistance Connection  
Replace Card

F08: Resistance Missing or Pressure Switch stuck on Full Found  
Overhaul CN1  
Overhaul Resistance Connection  
Overhaul Pressure Switch Connection  
Replace Resistance  
Replace Pressure Switch  
Replace Card

F09: Machine Setup Error Found  
Control Microprocessor Version  
Ask for EEPROM Spare Part indicating Microprocessor version

F10: Pressure Switch Empty and Full or neither Empty nor Full Pressure Switch Found  
Overhaul CN1  
Overhaul Pressure Switch Wiring  
Control CN1/Pressure Switch Continuity  
Replace Pressure Switch  
Replace Card

F11: Pump Feedback Missing  
Overhaul CN1  
Overhaul CNF  
Overhaul Pump Connector  
Overhaul Pressure Switch Connector  
Control Pump Windings  
Replace Pump  
Replace Card

F12 SPECIFIC FOR LVB2000 INDESIT EVOLUTION / DIALOGIC.

F12: Lack of Display card-Main Card Communication  
1. Check the effectiveness of contacts on CNC Connector Card  
2. Overhaul 8-way connector on Display card  
3. Check continuity of CNC-CN 8 way connector  
4. Replace Main Card  
5. Replace Display Card

F13: NTC wiring harness disconnected from the dryer system  
1. Check the efficiency of the terminals on the CNA connector board  
2. Check NTC wiring harness  
3. Check the wiring harness continuity of the CNA / NTC connectors  
4. Replace NTC  
5. Replace terminal board

F14: Dryer connector open or not connected  
1. Check the efficiency of the terminals on the CNI connector board  
2. Overhaul CN1  
3. Overhaul connector connection  
4. Replace the board.Merloni Elettrodomestici

F15: Dryer connector is always active  
1. Check the efficiency of the terminals on the CNI connector board  
2. Overhaul connector connection  
3. Overhaul the pressure sensor connection  
4. Replace the connector

5. Replace pressure sensor
6. Replace the board

#### F16: Non-functioning basket block

1. Go over connector card CNC
2. Go over connector basket block
3. Control Continuity of cabling CNC / basket block and basket block supply
4. Replace basket block
5. Replace card

#### N.B.From Fault F01 to fault F11

These are shown by LEDs in stand by/on in LVB2000 machines Ariston/Indesit.

#### From fault F01 to fault F12

These are shown in a display located on the instrument panel of LVB2000 machines Evolution Indesit.

#### From fault F01 to fault F15

Are those that are indicated according to the version via LED stand by/on or display positioned on the Wash Dry machine Ariston/Indesit panel.

#### 4. Replacing the card

Should you have to replace the card:

- retrieve the EEPROM from the old card
- reassemble the EEPROM onto the new replacement card (without EEPROM)

In the event, and only in this case:

- an F02 has been detected
- the above-mentioned checks have been carried out and no problems have been detected on the wiring or to the motor
- the card fitted onto the washing machine is a 12 or 20 version (the version is indicated by a label on the module-containing box with SW20 or SW12)

you should:

- fit on a new card (version 32 or above)
- fit on an updated EEPROM to request from the assistance service centre, stating the code (e.g. 80xxxxx0000 or 46xxxxx0000), the serial number and the washing machine model.

#### n1040066: LB2000 Hardware (Serial hardware key and Pliers)

---

As of 05.04.2000, the following Spare Parts are available from the Warehouse:

Part no.066055 - Serial hardware key for LVB2000 autotest. It has not to be linked to PC. (substituted with 077454);

Part no. 077454 - Serial hardware key for LVB2000-PC White (substituted with 084566);

Part no. 084566 - Serial hardware key for LB2000/EVOI -PC BIANCA (substituted with 095669 LB2000/EVOI, EVOII - PC).

Part no.066292 - Extractor pliers for integrated circuits.

For instructions on use, please refer to the relative Service Manual.

#### n1040208: New hardware testing plug LB2000 Teverola.

---

From the registration number 10827.0001 on all washing machines LB2000 with program selector, produced in the factory in Teverola, a new hardware testing plug cod. 084817 is used.

The new plug is not interchangeable with the pre-modified one cod. 064899; so both have to be managed. In case of substitution of the piece of furniture on an equipment, preceding the registration number 10827.0001, it will be necessary to put on the suitable plug.

This modification of the registration number 10820.0001 is extended to all washing machines and wash-driers with a programs' selector produced in the factory in Comunanza.

#### n1040211: Serial cable to connect the hardware key with the PC.

---

To connect the hardware key: LB2000 with the personal computer, you must use a serial cable, pin to pin 9 pin F/F, to guarantee the availability, it was decided to manage it as a spare part.

The SAT code of the cable (length 2m) is 084943.

#### n1040229: Items with IDC connectors.

---

From November 2001, in order to improve electrical connections on models produced in Teverola and Comunanza plants, electrical components supplied with IDC connectors have been applied.

New particulars are:

Code 083916 = PROGRAMME SELECT ELBI 1665 RAST.2 8 POS.

Code 085195 = POTENTIOMETER 8 POS. IDC;

Code 083915 = TEMPERATURE SENSOR NTC ELTH;

Code 087823 = CONDUCTIBILITY CONTROL CARD IDC;

Code 085194 = DOOR INTERLOCK IDC;

Code 080662 = PUSH BUTTON SWITCH NA ON OFF;

Code 088394 = PUSH BUTTON SWITCH S.CM NA IDC;

Code 086660 = PRESSURE SENSOR 1 LEVEL 93 - 68 + ANTI-SPILL;

Code 088393 = PRESSURE SENSOR 1 LEVEL 90 - 65 + ANTISPILL;

Code 087187 = PRESSURE SENSOR 1 LEVELS + ANTI-SPILL;

Code 085193 = PRESSURE SENSOR 1 LEVELS + ANTI-SPILL;

Code 084763 = RED WARNING LIGHT 12 V INDESIT;

Code 086663 = RED WARNING LIGHT 12 V RAST2 ARISTON

Code 087188 = HEATING ELEM.TERMAL CUT-OUT 1700W/230V L= 169,5 mm ;

Code 086661 = HEATING ELEMENT FOR PROBE 1700W 230V L= 212.5 mm;

Code 089416 = MODULE (LESS EEPROM) WM-WD > 1200 RPM.IDC ;

Code 089074 = MODULE (LESS EEPROM) SW 2.22 YELLOW >1200 IDC;

Code 089404 = MODULE (LESS EEPROM) IDC EW-AR-IN<1200.

Code 084838 = MODULE (LESS EEPROM) MODULE UNIV. STRIP SW 220 IDC.

Wires with IDC connectors can be found directly on spare parts list of models to be repaired.

This change has not affected EEPROM which remain the same.

To find the right particular to use:

1 – Find the modified particular into spare parts list of model of interest

2 – Check list of models herebelow given and compare with their serial no.

Models related to Comunanza and Teverola plants in alphabetical order.

Models of Communanza factory. by

A1124UK (23572) Matr. 11209.0001;  
A1234UK (22573) Matr. 11217.0001;  
A1435SUK (23575) Matr.20502.0001;  
A1435UK (23574) Matr.20502.0001;  
A1535UK (28069) Matr.20502.0001;  
A1635UK (27051) Matr.20502.0001;  
AA1000BFR (25700) Matr.11209.0001;  
AAX106LFR (25698) Matr. 20121.0001;  
AAX116LFR (25591) Matr.20121.0001;  
AAX126LFR (25699) Matr. 20121.0001;  
AAX149LFR (26286) Matr.20502.0001;  
AB104XTK (22504) Matr. 11217.0001;  
AB108XEO (26389) Matr.11209.0001;  
AB108XIT (22443) Matr. 11203.0001;  
AB63XGR (24894) Matr. 11217.0001;  
AB65XEO (24492) Matr. 11209.0001;  
AB66XIT (26972) Matr. 20121.0001;  
AB84XTK (22504) Matr. 11217.0001;  
AB88DAG (26561) Matr.20527.0001;  
AB88DEX (24898) Matr.20527.0001;  
AB88XEO (26388) Matr. 11217.0001;  
AB88XEX (23861) Matr. 11217.0001;  
AB88XIT (22444) Matr. 11209.0001;  
AC106BFR (25817) Matr.20527.0001;  
AC120LIT (26836) Matr.20527.0001;  
AC128LFR (25818) Matr.20527.0001;  
AC80LIT (26835) Matr.20527.0001;  
AC96BFR (25816) Matr.20527.0001;  
AD1000EX (27764) Matr. 20610.001;  
AD1200IT (26694) Matr. 20610.001;  
AD1200TK (27199) Matr. 20610.001;  
AD1600FR (27157) Matr. 20610.001;  
AD1600IT (26834) Matr. 20610.001;  
AD1600ITPXU (27163) Matr. 20610.001;  
AL107XFR (23684) Matr. 20121.0001;  
AL108DAG (24900) Matr.20527.0001 ;  
AL108DEX (24901) Matr.20527.0001;  
AL108DK60 HZ (24905) Matr.20527.0001  
AL108XBE (23648) Matr. 11203.0001;  
AL108XSTK (22698) Matr.20121.0001;  
AL108XTK (22506) Matr.20121.0001;  
AL109SLFR (22495) Matr.20121.0001;

AL109XAUS (26024) Matr. 11217.0001;  
AL109XEU (22514) Matr. 11203.0001;  
AL109XEX (24734) Matr. 11203.0001;  
AL109XIT (22360) Matr. 20121.0001;  
AL109XSK (25855) Matr. 11203.0001;  
AL118DTK (24902) Matr.20527.0001;  
AL128DAUS (24904) Matr.20527.0001;  
AL128DEX (24903) Matr.20527.0001;  
AL128DSAUS (25742) Matr.20527.0001;  
AL128XBE (23656) Matr. 20121.0001;  
AL129SLBE (23990) Matr.20121.0001;  
AL129XAUS (23864) Matr. 11217.0001;  
AL129XEU (22515) Matr. 11202.0001;  
AL129XSK (25856) Matr. 11202.0001;  
AL129XTK (22507) Matr.20121.0001;  
AL12SUK (24363) Matr. 11209.0001;  
AL12UK (23576) Matr. 11209.0001;  
AL149XEX (22516) Matr.20502.0001;  
AL149XSK (25857) Matr.20502.0001;  
AL14UK (23577) Matr.20502.0001;  
AL169XAUS (26458) Matr.20502.0001;  
AL169XEU (24897) Matr.20502.0001;  
AL67HCGR (23885) Matr.11210.0001;  
AL68XEX (23863) Matr. 11211.0001;  
AL68XIT (22363) Matr. 11126.0001;  
AL68XPT (22485) Matr. 11217.0001;  
AL68XSPT (22977) Matr. 11217.0001;  
AL88DEX (24899) Matr.20527.0001;  
AL88XEU (22512) Matr. 11204.0001;  
AL88XPT (22482) Matr. 20121.0001;  
AL88XSPT (22483) Matr.20121.0001;  
AL89XIT (22362) Matr. 20121.0001;  
AL89XSEX (24735) Matr. 11203.0001;  
AL89XSIT (22445) Matr. 20121.0001;  
AL98XSPT (27630) Matr.20121.0001;  
ALD10UK (26092) Matr.20527.0001;  
ALD12SUK (26094) Matr.20527.0001;  
ALD12UK(26093) Matr.20527.0001;  
ALS104XFR (22501) Matr. 20114.0001;  
ALS109XEO (26392) Matr. 11217.0001;  
ALS109XEU (22520) Matr. 11219.0001;  
ALS109XIT (22470) Matr. 20114.0001;  
ALS129XEU (22521) Matr. 20114.0001;  
ALS68XIT (22473) Matr. 11217.0001;  
ALS88XEO (26391) Matr. 20108.0001;  
ALS88XEU (22519) Matr. 20108.0001;  
ALS89XIT (22472) Matr. 20114.0001;  
ALS89XSIT (22471) Matr. 20114.0001;  
AWD10UK (26095) Matr.20527.0001;  
AWD12SUK (26097) Matr.20527.0001;  
AWD12UK (26096) Matr.20527.0001;  
CDE12X (27226) Matr. 20610.001;  
CDE12XUK (27227) Matr. 20610.001;  
LBE12X (26961) Matr. 20610.001;  
LBE12XUK (27155) Matr. 20610.001;  
LBE6X (26968) Matr. 20610.001;  
LBE8X (26969) Matr. 20722.0001;

SGE12XUK (27241) Matr. 20610.001;  
W104TXSBE (25827) Matr. 20128.0001;  
W104TXSTK (24746) Matr. 20121.0001;  
W104TXTK (23411) Matr. 20121.000;1  
W105TXEX (234403) Matr. 20128.0001;  
W105XDE (24835) Matr. 20114.0001;  
W106XDE (24836) Matr. 20114.0001;  
W108XIT (24820) Matr. 20128.0001;  
W108XSP (23405) Matr. 20128.0001;  
W1215XSDE (24839) Matr. 20114.0001;  
W123SUK (23413) Matr. 20121.0001;  
W123UK (23369) Matr. 20121.0001;  
W123XNL (23416) Matr. 20121.0001;  
W124XDE (24837) Matr. 20121.0001;  
W124XNL (23418) Matr. 20114.0001;  
W125TXEX (23378) Matr. 20128.0001;  
W125XDE (24838) Matr. 20114.0001;  
W125XSDE (24839) Matr. 20114.0001;  
W125XFR (24435) Matr. 20128.0001;  
W126XDE (24840) Matr. 20114.0001;  
W128XSP (24428) Matr. 20128.0001;  
W133UK (24026) Matr. 20121.0001;  
W133SUK (24518) Matr. 20121.0001;  
W143SUK (27059) Matr.20502.0001;  
W143UK (27530) Matr.20502.0001;  
W143XNL (23170) Matr.20502.0001;  
W144XDE (24841) Matr.20520.0001;  
W144XNL (23419) Matr.20502.0001;  
W144XSNL (24743) Matr.20502.0001;  
W145TXEX (23379) Matr.20521.0001;  
W145XDE (24842) Matr.20520.0001;  
W146XDE (23843) Matr.20520.0001;  
W146XSDE (26461) Matr.20520.0001;  
W165TXEX (24796) Matr.20502.0001;  
W165XNL (24764) Matr.20502.0001;  
W166XDE (26464) Matr.20520.0001;  
W682XSIT (24813) Matr. 20114.0001;  
W683XGIT 24812) Matr. 20114.0001;  
W68XIT (24408) Matr. 20114.0001;  
W68XSIT (24409) Matr. 20114.0001;  
W842XSIT (24818) Matr. 20128.0001;  
W843XGIT (24820) Matr. 20128.0001;  
W84TXEX (23401) Matr. 20114.0001;  
W84TXTK (23410) Matr. 20121.0001;  
W84XSP (23409) Matr. 20114.0001;  
W84XSP (24469) Matr. 20114.0001;  
W857XSPT (26661) Matr. 20128.0001;  
W857XSPT (26661) Matr. 20128.0001;  
W88XIT (23395) Matr. 20128.0001;  
WA10XIT (26883) Matr. 20128.0001;  
WA6XIT (26881) Matr. 20114.0001;  
WA8XIT (26882) Matr. 20128.0001;  
WA8XSIT (26919) Matr. 20128.0001;  
WAS6XIT (27052) Matr. 20204.0001;  
WAS8XIT (27053) Matr. 20205.0001;  
WD104TEX (24908) Matr. 20603.001;  
WD105TEX (24909) Matr. 20603.001;

WD105TEX220-60 (27603) Matr. 20603.001;  
WD106FR (25691) Matr. 20603.001;  
WD10UK (25056) Matr. 20603.001;  
WD118SP (26335) Matr. 20603.001;  
WD11UK (25058) Matr. 20604.001;  
WD125TEX (24910) Matr. 20604.001;  
WD125TSEX (27152) Matr. 20604.001;  
WD12SUK (25538) Matr. 20604.001;  
WD12UK (25057) Matr. 20604.001;  
WD12XUK (27233) Matr. 20610.001;  
WD84EX (24906) Matr. 20603.001;  
WD84TEX (24907) Matr. 20603.001;  
WDE12X (27232) Matr. 20610.001;  
WE105XR (26953) Matr. 20603.0001;  
WE10UK (24459) Matr. 20603.0001;  
WE11UK (24460) Matr. 20603.0001;  
WE125XEX (24789) Matr. 20603.0001;  
WE12SDE (27149) Matr. 20610.001;  
WE12SUK (24462) Matr. 20603.0001;  
WE12SUK (27154) Matr. 20610.001;  
WE12UK (24461) Matr. 20603.0001;  
WE12XNL (24762) Matr. 20603.0001;  
WE13UK (24463) Matr. 20603.0001;  
WE145XEX (24792) Matr. 20610.001;  
WE14DE (27080) Matr. 20610.001;  
WE14SDE (27150) Matr. 20610.001;  
WE14SUK (27153) Matr. 20610.001;  
WE14UK (24464) Matr. 20610.001;  
WE14XNL (24763) Matr. 20610.001;  
WE14XSNL(27752) Matr. 20610.001;  
WE16DE (27151) Matr. 20610.001;  
WE16UK (25162) Matr. 20610.001;  
WE16XNL (27765) Matr. 20610.001;  
WE8XR (26952) Matr. 20603.0001;  
WES9XR (26892) Matr. 20603.001;  
WH96TXE (25376) Matr. 20128.0001;  
WS105TXEX (23356) Matr. 20205.0001;  
WS682XSIT (24826) Matr. 20204.0001;  
WS683XGIT (24822) Matr. 20204.0001;  
WS84TXEX (23355) Matr. 20204.0001;  
WS88XIT (23349) Matr. 20205.0001;

Models of Teverola factory.

AB103TK (27113) Matr. 20408.0001  
AB104IT (27913) Matr. 20408.0001;  
AB107PT (27094) Matr. 20408.0001;  
AB63EX (23909) Matr. 20408.0001;  
AB83TK (22503) Matr. 20408.0001;  
AB84IT (27914) Matr. 20408.0001;  
AB84PT (22484) Matr. 20408.0001;  
AB95AUS (23879) Matr. 20408.0001;  
AB95EU (23781) Matr. 20408.0001;  
AL102PFR (27299) Matr. 20408.0001;  
AL109K (23910) Matr. 20408.0001;  
AL10UK (23590) Matr. 20408.0001;  
AL65PT (27093) Matr. 20408.0001;  
LNA855FR (27595) Matr. 20325.0001;

W103NL (24600) Matr. 20314.0001;  
W103TTK (23337) Matr. 20408.0001;  
W103UK (23334) Matr. 20408.0001;  
W104DE (24834) Matr. 20408.0001;  
W104FR (23340) Matr. 20408.0001;  
W104NL (23386) Matr. 20408.0001;  
W104SP (24415) Matr. 20325.0001;  
W104TBE (25474) Matr. 20408.0001;  
W104TEX (23332) Matr. 20408.0001;  
W105FR (27700) Matr. 20408.0001;  
W113UK (23335) Matr. 20408.0001;  
W63TAUS (25885) Matr. 20408.0001;  
W63TEX (24768) Matr. 20408.0001;  
W73FR (23329) Matr. 20408.0001;  
W83DE (24833) Matr. 20408.0001;  
W83NL (24599) Matr. 20313.0001;  
W83SP (23317) Matr. 20312.0001;  
W83TAUS (25886) Matr. 20408.0001;  
W83TEX (23310) Matr. 20318.0001;  
W83TK (23320) Matr. 20408.0001;  
W83TTK) (23321) Matr. 20408.0001;  
W83UK (23302) Matr. 20408.0001;  
W85FR (27699) Matr. 20408.0001;  
W93TEX (23308) Matr. 20408.0001;  
W93UK (23330) Matr. 20408.0001;  
W9521E (25379) Matr. 20408.0001;  
WA10IT (26880) Matr. 20408.0001;  
WA10PT (27641) Matr. 20408.0001;  
WA6IT (26878) Matr. 20408.0001;  
WA6PT (27639) Matr. 20408.0001;  
WA8IT (26879) Matr. 20408.0001;  
WA8PT (27640) Matr. 20408.0001;  
WP100EX (27761) Matr. 20408.0001;  
WP67EX (27757) Matr. 20402.0001.

## n1040230: Modified shock absorber bracket - Comunanza plant

---

From the registration no. 11107.0001, the washing machines and Washer-Dryers produced in the Comunanza factory Plant, have used modified shock absorbers with the bracket that fixes onto the cabinet.

The codes for the new shock absorbers are:

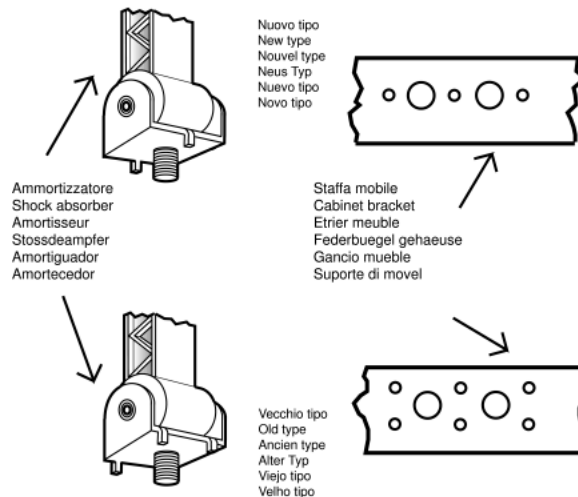
Code 086372 - Shock absorber 120 N (11105);

Code 086515 - Shock absorber 80 N (11105);

The modification also involved the cabinets in the fixing area that for the shock absorbers represent a different type of slotting (see enclosed figure).

To avoid the proliferation of the codes, the modified cabinets are handled with the same SAT code as the pre-modification, when replacing the cabinet you will need to check the registration number of the appliance.

In order to perform a proper task the intervention of the cabinet replacement it is recommended, that at least in the initial phase, to keep both the combination of shock absorbers in stock. The shock absorbers code 066184 and 064503 will continue to be normally handled.



### n1040242: Power card with welded eeprom.

From serial number 20304.0001, IDC power card with welded eeprom is used to ensure the perfect connection of all parts, in the Comunanza, Teverola and Brembate factories.

To replace the module with welded eeprom, it will be necessary to use the eeprom indicated in the SAT document of the model concerned.

To replace the module on a unit with welded eeprom both the SAT module and the eeprom are required, because the latter cannot be reused.

### n1040246: Button switch NO

From serial number 20302.0001, the button switch NO code 088394 is used instead of the premodified switch NO+NO code 075445 (see attached illustration) and the button switch SE-NO code 063971 is used instead of the premodified switch SE-NO code 058465 (see attached illustration) on washing machine AL68XPT .

Both switches are regularly managed, therefore in case of repair the serial number of the unit must be taken into consideration. This modification also regards the wiring code 088448 which as with all the LB 2000 models, is managed only by request, i.e. without stock, in order to always manage the interchangeable one with the last modification.

Due to the simplicity of the modification, the images of the wiring diagrams used remain the same as the IDC wiring diagrams already available on the WEB.

The modification will be also extended to other models which from time to time will be listed below.

COMUNANZA (Codes 063971 e 08394)

A1124UK (23572) Matr. 20318.0001;  
 A1234UK (23573) Matr. 20318.0001;  
 A1324UK (28068) Matr. 20318.0001;  
 AA1000BFR (25700) Matr. 20318.0001;  
 AAX106LFR (25698) Matr. 20318.0001;  
 AAX116LFR (25591) Matr. 20318.0001;  
 AAX126LFR (25699) Matr. 20318.0001;  
 AB104XTK (22505) Matr. 20318.0001;

AB108XEO (26389) Matr. 20318.0001;  
AB108XIT (22443) Matr. 20318.0001;  
AB63XGR (24894) Matr. 20318.0001;  
AB65XEO (24492) Matr. 20318.0001;  
AB67XIT (27896) Matr. 20318.0001;  
AB84XTK (22504) Matr. 20318.0001;  
AB87XIT (27897) Matr. 20318.0001;  
AB88XEX (23681) Matr. 20318.0001;  
AB88XIT (22444) Matr. 20318.0001;  
ABS66XIT (28070) Matr. 20311.0001;  
AL107FR (23684) Matr. 20318.0001;  
AL108XBE (23648) Matr. 20318.0001;  
AL108XSTK (22698) Matr. 20318.0001;  
AL108XTK (22506) Matr. 20318.0001;  
AL109SLFR (22495) Matr. 20318.0001;  
AL109XAUS (26024) Matr.20318.0001;  
AL109XEU (22514) Matr. 20318.0001;  
AL109XIT (22360) Matr. 20318.0001;  
AL109XSK (25855) Matr. 20318.0001;  
AL128XBE (23656) Matr. 20318.0001;  
AL129SLBE (23990) Matr. 20318.0001;  
AL129XAUS (23864) Matr. 20318.0001;  
AL129XEU (22515) Matr. 20318.0001;  
AL129XEU (22515) Matr. 20318.0001;  
AL129XSK (25856) Matr. 20318.0001;  
AL129XTK (22507) Matr. 20318.0001;  
AL12SUK (24363) Matr. 20318.0001;  
AL12UK (23576) Matr. 20318.0001;  
AL67XHCGR (23885) Matr. 20318.0001;  
AL68X (22363) Matr. 20318.0001;  
AL68X (22363) Matr. 20318.0001;  
AL68XEX (23863) Matr. 20318.0001;  
AL68XSPT (22977) Matr. 20318.0001;  
AL68XSPT (22977) Matr. 20318.0001;  
AL78XPT (27627) Matr. 20318.0001;  
AL78XSPT (27628) Matr. 20318.0001;  
AL88XEU (22512) Matr. 20318.0001;  
AL88XPT (22482) Matr 20318.0001;  
AL88XSPT (22483) Matr. 20318.0001;  
AL89X (22362) Matr. 20318.0001;  
AL89XSIT (22445) Matr. 20318.0001;  
AL98XPT (27629) Matr. 20318.0001;  
AL98XSPT (27630) Matr. 20318.0001;  
ALS104XFR (22501) Matr. 20311.0001;  
ALS109XEU (22520) Matr. 20311.0001;  
ALS109XIT (22470) Matr. 20311.0001;  
ALS109XIT (22470) Matr. 20311.0001;  
ALS129XEU (22521) Matr. 20311.0001;  
ALS68XIT (22473) Matr. 20311.0001;  
ALS869XIT (24887) Matr. 20311.0001;  
ALS88XEO (26391) Matr. 20311.0001;  
ALS88XEU (22519) Matr. 20311.0001;  
ALS89XIT (22472) Matr. 20311.0001;  
ALS89XIT (22472) Matr. 20311.0001;  
ALS89XSIT (22471) Matr. 20311.0001;  
L687XIT (24890) Matr. 20318.0001;  
L687XIT (24890) Matr. 20318.0001;

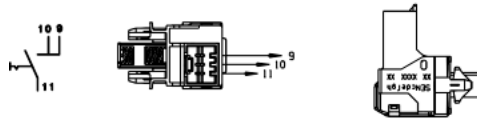
LE1069XIT (27895) Matr. 20318.0001;  
LE869XIT (24884) Matr. 20318.0001;  
LES669XIT (24886) Matr. 20311.0001;  
W104TKSTK (24746) Matr. 20318.0001;  
W104TXTK (23411) Matr. 20318.0001;  
W105TXEX (23403) Matr. 20318.0001;  
W105XDE (24835) Matr. 20318.0001;  
W106XDE (28089) Matr. 20318.0001;  
W108XIT (23402) Matr. 20318.0001;  
W108XSP (23408) Matr. 20318.0001;  
W123SUK (23413) Matr. 20318.0001;  
W123UK (23369) Matr. 20318.0001;  
W123XNL (23416) Matr. 20318.0001;  
W124XDE (24837) Matr. 20318.0001;  
W124XNL (23418) Matr. 20318.0001;  
W125TXCH (28194) Matr. 20318.0001;  
W125TXEX (23378) Matr. 20318.0001;  
W125XDE (24838) Matr. 20318.0001;  
W125XFR (24435) Matr. 20318.0001;  
W125XSDE (24839) Matr. 20318.0001;  
W126XDE (24840) Matr. 20318.0001;  
W128XFR (27701) Matr. 20318.0001;  
W128XSP (24428) Matr. 20318.0001;  
W682XSIT (24813) Matr. 20318.0001;  
W683XGIT (24812) Matr. 20318.0001;  
W68XIT (24408) Matr. 20318.0001;  
W68XSIT (24409) Matr. 20318.0001;  
W842XSIT (24818) Matr. 20318.0001;  
W843XGIT (24820) Matr. 20318.0001;  
W84TXEX (23401) Matr. 20318.0001;  
W84TXTK (23410) Matr. 20318.0001;  
W84XSP (23409) Matr. 20318.0001;  
W84XSP (24469) Matr. 20318.0001;  
W857XSPT (26661) Matr. 20318.0001.  
W88XIT (23395) Matr. 20318.0001;  
WA10XIT (26883) Matr. 20318.0001;  
WA10XIT (26883) Matr. 20318.0001;  
WA6XIT (26881) Matr. 20318.0001;  
WA8XIT (26882) Matr. 20318.0001;  
WA8XSIT (26919) Matr. 20318.0001;  
WAS6XIT (27052) Matr. 20311.0001;  
WAS8XIT (27053) Matr. 20311.0001;  
WS105TXEX (23356) Matr. 20311.0001;  
WS682XSIT (24826) Matr. 20311.0001;  
WS683XGIT (24822) Matr. 20311.0001;  
WS68XIT (24594) Matr. 20311.0001;  
WS84TXEX (23355) Matr. 20311.0001;  
WS88XIT (23349) Matr. 20311.0001;

TEVEROLA (Code 063971)

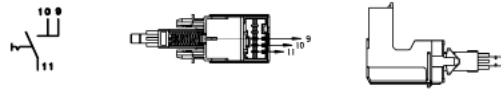
AB40AG (26350) Matr. 20304.0001;  
AB40EX (24733) Matr. 20304.0001;  
AB40IT (22468) Matr. 20304.0001;  
AB43AG (24364) Matr. 20304.0001;  
AB43EX50-60HZ (23907) Matr. 20304.0001;  
AB43IT (22467) Matr. 20304.0001;  
AB43PT (22489) Matr. 20304.0001;

AB43SP (23899) Matr. 20304.0001;  
AB52PT (27554) Matr. 20304.0001;  
AB53AG (27088) Matr. 20304.0001;  
AB53EO (23780) Matr. 20304.0001;  
AB53EX50-60HZ (23908) Matr. 20304.0001;  
AB53IT (22460) Matr. 20304.0001;  
AB56FR (22740) Matr. 20304.0001;  
AB60IT (26971) Matr. 20304.0001;  
AB63IT (22455) Matr. 20304.0001;  
AB64AG (24365) Matr. 20304.0001;  
AB64AG (24365) Matr. 20304.0001;  
AB64PT (22486) Matr. 20304.0001;  
AB66FR (22490) Matr. 20304.0001;  
BE563IT (24882) Matr. 20304.0001;  
W41IT (27758) Matr. 20304.0001;  
W432SIT (24806) Matr. 20304.0001;  
W432SIT (24806) Matr. 20304.0001;  
W435PT (23319) Matr. 20304.0001;  
W43FR (23312) Matr. 20304.0001;  
W43IT (23299) Matr. 20304.0001;  
W43IT (23299) Matr. 20304.0001;  
W43SP (27506) Matr. 20304.0001;  
W43SP (27506) Matr. 20304.0001;  
W43TAG (23323) Matr. 20304.0001;  
W43TAG (23323) Matr. 20304.0001;  
W43TEX (23306) Matr. 20304.0001;  
W43TEX (23306) Matr. 20304.0001;  
W44IT (23294) Matr. 20304.0001;  
W44XIT (25547) Matr. 20304.0001;  
W4521E (25377) Matr. 20304.0001;  
W4521E (25377) Matr. 20304.0001;  
W535PT (23385) Matr. 20304.0001;  
W53FR (25471) Matr. 20304.0001;  
W53IT ( 23300) Matr. 20304.0001;  
W53SP (23338) Matr. 20304.0001;  
W53TEX (24767) Matr. 20304.0001;  
W53TEX (24767) Matr. 20304.0001;  
W543GIT (25688) Matr. 20304.0001;  
W630FR (24613) Matr. 20304.0001;  
W634PT (24627) Matr. 20304.0001;  
W63FR (23341) Matr. 20304.0001;  
W63IT (23295) Matr. 20304.0001;  
W63SP (23316) Matr. 20304.0001;  
W63TEX (23305) Matr. 20304.0001;  
W63XIT (25544) Matr. 20304.0001;  
W642TXEX (25548) Matr. 20304.0001;  
W64IT (24413) Matr. 20304.0001;  
W6521E (25378) Matr. 20304.0001;  
WA6IT (26878) Matr. 20318.0001;  
WA8IT (26879) Matr. 20304.0001;  
WP42IT (27759) Matr. 20304.0001;  
WP42IT (27759) Matr. 20304.0001;  
WP62EX (27760) Matr. 20304.0001;

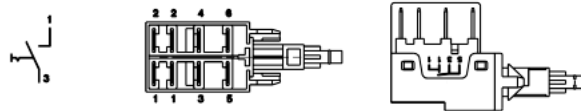
Cod. 088394



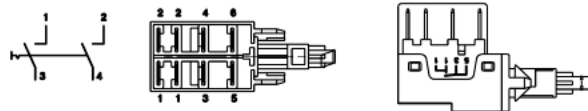
Cod. 075445



Cod. 063971



Cod. 058465



#### n1040255: Elimination of post-luminescence.

---

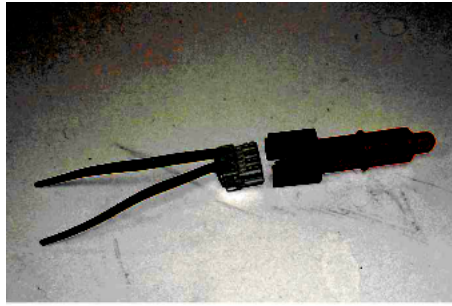
Elimination of post-luminescence at end of cycle on LB2000 ARISTON / INDESIT washing machines equipped with IDC wiring. In case of post-luminescence at the end of cycle in the Ariston / Indesit LB 2000 washing machines, the following procedure must be carried out during the intervention phase:

- 1) Cut approx. 10 cm of the lamp connector wires on the washing machine wiring.
- 2) Connect the two wires of the specific IDC connector code 089026 (see attached illustration) to the washing machine wiring and check for perfect insulation after finishing taping;
- 3) Connect the new lamp code 089024 for Indesit or code 089025 for Ariston and refit it on the panel.

#### n1040267: Power cable Australia.

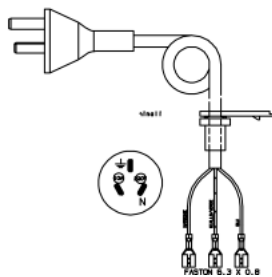
---

From serial no. 20617.0001, the power cable code 089918 (see picture) specific for the Australian market has been used on models AL128DAUS, AL128DSAUS and AL109XAUS.



**COD. 089918**

CAVO ALIMENTAZIONE 3X1 2,55MT  
SUPPLY CABLE 3 X 1 - 2,55MT  
CABLE ALIMENTATION 3 X 1 - 2,55MT  
NETZANSCHLUSSKABEL 3 X 1 - 2,55MT  
CABLE ALIMENTACION 3 X 1 - 2,55MT  
CABO DE ALIMENTACAO 3 X 1 - 2,55MT



n1040276: Power supply cable + integrally moulded filter.

---

All appliances produced in the Comunanza (from serial no. 21008.0001), Teverola (from serial no. 21111.0001) and Brembate (from serial no. 21119.0001) factories have been equipped with power supply cables with integrally moulded filter (see fig.1 - 1A and 1B) and new units having a specific opening at the back for fixing the new cables (see fig. 1 - 1C).

The new units, together with the new cables, can be used in place of the premodification ones, by connecting the wiring to the

cable, as shown in figure 1 - 1D.

The codes of the new units and of those replaced (ESI - table n1040276fig02), which will be managed until stocks run out, are given below.

The new power supply cables are:

- Code 091632 - Power supply cable 3x1 schuko 1.5m+capacitance filter;
- Code 091633 - Power supply cable 3x1 schuko 1.5m+inductive filter;
- Code 091634 - Power supply cable UK 3x1 l= 1950mm + inductive filter;
- Code 091635 - Power supply cable UK 3x1 l=1950mm+capacitance filter;
- Code 091636 - Power supply cable l=2.55m AUS+inductive filter;
- Code 091641 - Power supply cable l=2550mm AG +capacitance filter;
- Code 091642 - Power supply cable 1.85mt SHUKO no inductive filter;
- Code 091643 - Power supply cable 3x1 (CH) 1.5m+inductive filter;
- Code 091645 - Power supply cable 3450mm SOUTH AF.+capacitance filter;
- Code 091690 - Power supply cable shuko l2.55m KOREA+inductive filter;
- Code 091689 - Power Supply cable l=2550mm AG+inductive filter.

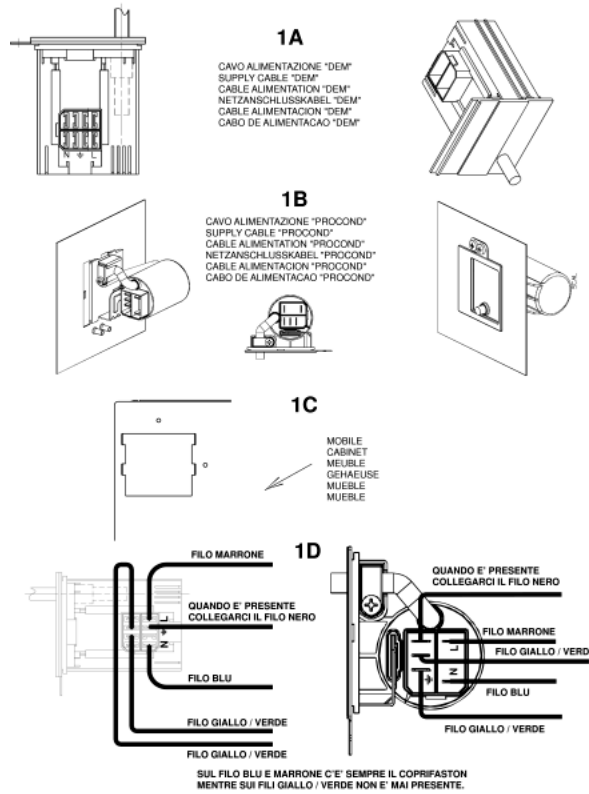
**IMPORTANT:** the fixing / continuity screw is a specific self-scraping screw (code 092348) that ensures earth continuity between the filter and the unit. The same screw must be refitted in order to guarantee machine conformity.

The premodification wirings, are also managed for modified products by making the connection to the terminal block of the new cable as shown in fig. 1 - 1D.

The wiring diagrams given in the Documentation remain unchanged.

DESCRIZIONE MOBILI	STABILIMENTO	CODICE SAT MOBILE V.T.	CODICE SAT MOBILE N.T.
MOBILE B.27 'AB40-STAB.46'	TEVEROLA	65974	90584
MOBILE BIANCO 'W113(UK)'	TEVEROLA	75417	90583
MOBILE BIANCO 'LVB2000'	COMUNANZA	64500	90582
MOBILE BIANCO 'ALS-ABS LVB2000'	COMUNANZA	74146	90581
MOBILE SILVER 'LVB2000'	COMUNANZA	74184	90580
MOBILE SILVER ALS'LVB2000	COMUNANZA	74629	90579
MOBILE BIANCO W133(UK)	COMUNANZA	75315	90578
MOBILE BIANCO AL148FR'	COMUNANZA	78629	90577
MOBILE BIANCO WS63XIT'	COMUNANZA	76744	90576
MOBILE SILVER FIAT 647'W68XSIT'	COMUNANZA	77022	90575
MOBILE BIANCO DIALOGIC-2001	COMUNANZA	84310	90574
MOBILE BIANCO LBEBX	COMUNANZA	84608	90573
MOBILE BIANCO27 INDESIT	BREMBATE	84713	91748
MOBILE ARISTON BIANCO27 6KG	BREMBATE	89483	91742
MOBILE BIANCO27 6KG '535'	BREMBATE	83287	91749
MOBILE BIANCO27 5KG	BREMBATE	81696	91752
MOBILE ARISTON BIANCO27 SLIM	BREMBATE	89649	91754
MOBILE INDESIT BIANCO27	BREMBATE	89963	91756
MOBILE BIANCO27 6KG INDESIT	BREMBATE	91036	91758

FIG. 1



n1040282: New drainage OKO system.

From serial number 21219.0001, the new "OKO" drainage system has been introduced on the washing machines produced in the Comunanza factory.

The last two numbers of the Industrial Code (located on the rating plate) of the models relevant to this note will be 30 (e.g. 80233560130 - see Appendix A)

N.B. The industrial code will not change on the models with induction motor (see following list).

MODEL	INDUSTRIAL CODE
ABS53XIT	8022480000
AB54XPT	80224870100
AB63XEX	80225100100
ABS63XEU	80225180100
WS44XIT	80233440100
WS431TXEX	80233470100
WS642TXEX	80233540100
W63XSP	80233890000
AB53XEU	80238820000
AB65XEU	80238830000
AL 64XSP	80239020100
WS43XIT	80244510000
WS53XIT	80244520000
WH66TXE	80253750100
ABS63XEO	80263900000

The new items are:

- EEPROM (the OKO system requires a new setting of load timing parameters). THE NEW EEPROMS REPLACE ALL THE

ONES CODED PREVIOUSLY.

- BOWL (hopper tube hole shifted forwards);
- DETERGENT LOADING TUBE (see fig. 1);
- PRESSURE SWITCH (changed levels);
- OKO PUMP BOWL BLOWER + BALL (see fig. 2A, 2B and 2C);
- CONDUCTIVITY SENSOR (if provided, it is shorter than the premodification item);
- DRAIN PUMP (without detergent collecting tube connection);
- HOPPER (shifted in front of detergent loading tube connection). Fig. 3A post-modification. Fig. 3B premodification);
- AIR TRAP (different shape);
- PRESSURE SWITCH TUBE (different length);
- DRAIN TUBE STOP (specific);

In particular, the OKO system consists of a spherical plastic component inserted in the tube that connects the bowl to the drain pump (see fig.2 A).

At the beginning of each wash cycle the washing machine fills water for 10 seconds and activates the drain pump for 2 seconds. In this way, the water level in the bowl is different from that in the drain tube; this difference increases the thrust of the ball upwards, closing the bowl-pump connection tube hermetically (see fig. 2D).

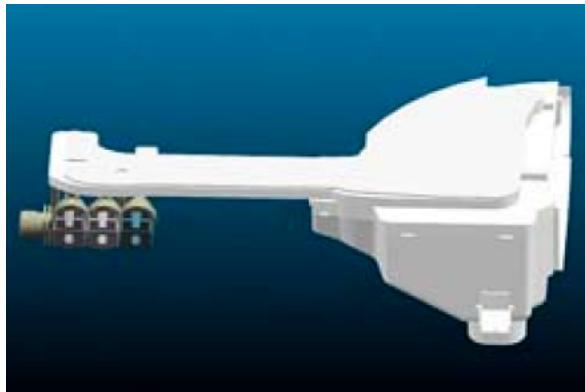
This system has the double advantage of:

- 1) separating the wash water and the water in the drain hose, thus saving energy during the heating phase;
- 2) and ensuring optimal use of all the detergent.

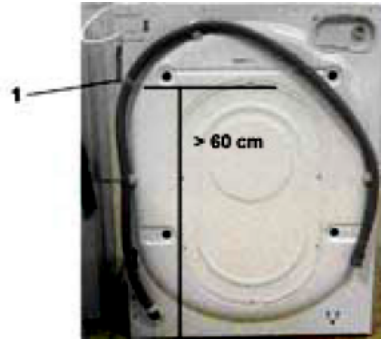
With the introduction of this new component, the detergent collecting tube is no longer required and the pump has one hole only to convey water from the tank.

For the correct operation of the OKO system, it is important that the drain hose of the washing machine remains fixed to the back of the unit with a plastic clamp (to this end, the clamp withstands a 25 kg load; see reference 1 in fig. 4); otherwise, the drain hose must absolutely reach the height of the clamp. (minimum 60 cm.)





n1040286: Shock absorbers with 8.15 mm fixing hole.



From serial number 30127.0001, for appliances produced in the Comunanza factory, the shock absorbers will be fixed to the tank unit cradle using: the 8 mm diameter screw code 093750 in place of the 10 mm screw code 030446, and related locking nut code 030443 in place of code 030680.

The items affected by this modification are:

Code 093848 - Tank unit cradle 46 lt ;

Code 093878 - Tank unit cradle 40 lt.

Code 093884 - Shock absorber 80 N

Code 093885 - Shock absorber 120 N

The premodified shock absorbers code 086515 and 086372 will continue to be used, whereas cradles code 064518 and 066074 will be used until stocks run out, after which they will be replaced with the new items after widening the shock absorber fixing holes to a diameter of 11 mm.

#### n1040291: Interchangeability of bowls on LB2000 appliances Comunanza..

The Comunanza factory has modified the oscillating unit on all the 2000 range models produced in the Comunanza factory:

a) From serial number 21219.0001, the LB 2000 EVO bowl (see fig. 02) is gradually replacing the LB2000 version (see fig. 01), with the following differences:

- 1) Detergent loading tube hole shifted forwards;
- 2) Elimination of detergent recovery tube hole.

This modification has involved the introduction of the following items:

- Detergent loading tube (washing machine SAT code 092161 and combined washer-dryer SAT code 092273);
- OKO pump bowl tube (models code 092174, Snella models with induction motor code 094312);
- Hopper (for rotary slide drawer SAT code 092176, for linear slide drawer code 092314);

b) From serial number 30312.0001, all washing machines produced in the Comunanza factory have been equipped with the new LB2000 EVO II range bowl (see fig. 03), in place of the LB2000 EVO version (see fig. 02), with the following difference:

- 1) Porthole with a diameter of 30 cm instead of 28 cm;

This modification has involved the introduction of the following items:

- Tapered porthole seal - rear diameter 30 cm front 28 cm;
- Code 093345 - Standard seal;
- Code 094091 - Washer-dryer seal;
- Code 094093 - Snella seal
- Porthole seal rear fixing ring for 30 cm diameter SAT code 092155;

· Front counterweight (SAT code 092178).


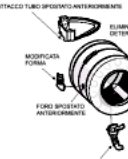
Two LB2000 Evo bowl codings have been created in order to reduce the number of bowls managed by the After-sales Service (see fig. 04):

- 1) LB2000 Evo bowl kit coding (Table 01);
- 2) LB2000 EVO II range bowl kit coding (Table 02);

All bowl codes (with related interchangeability), are indicated in fig. 04 TAB. 03 attached to this Note.


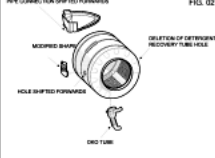
Starting from serial number 30325.0001, for all the versions of Evizzate SNELLA LB2000 washing machines produced in the Comunanza factory the diameter of tapered porthole must seal return 28 cm. Starting from this serial number all the washing machines must be supported with door seal and fixing ring in old version.

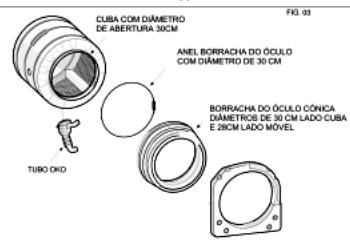
Starting from serial number 30616.0001, for all the washing machines Evizzate LB2000 produced in Comunanza, the diameter of tapered porthole must seal return 28 cm. Starting from this serial number all the washing machines must be supported with door seal and fixing ring in old version.

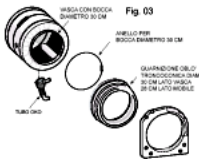
		CUBA LB 2000	CUBA LB 2000 EVOLUCIONADA
<b>EN PRODUCCION</b>		Matricula MENOR (+) 21218.0001  Fig. 01	Matricula Entre 21219.0001 y 30312.0001 ATTACCO TUBO SPINUSKETTO ANTICORROSIONE  Fig. 02
		<b>MODIFICACIONES</b>	ELIMINATO FORO TUBO RECUPERO (SPINUSKETTO) MODIFICATA FORMA FORO SPINUSKETTO ANTICORROSIONE TUBO FISSO
<b>SERVIZIO TECNICO</b>	0204		
	0923420		
	064513		<b>KIT 092414</b>
	077330		<b>KIT 092421</b>
	081927		<b>KIT 092257</b>
	074217		<b>KIT 092263</b>
	080661		<b>KIT 092415</b>
	084591		<b>KIT 092452</b>
	076778		<b>KIT 092545</b>
	076850		<b>KIT 092311</b>
075876			
074134			

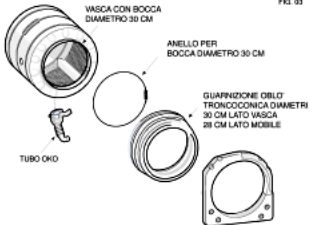
		VASCA LB 2000	VASCA LB 2000 EVIZZATA
<b>IN PRODUZIONE</b>		Matricola Minore (+) 21218.0001 FIG.01 	Matricole dal 21218.0001 al 30311.0001 FIG.02 
	<b>MODIFICHE</b>		Vaschetta detersivo, attacco tubo spostato più anteriormente Eliminato tubo recupero detersivo Modificato tubo vasca pompe (Sistema OKO) Modificata forma del tubo carico detersivo Vasca, foro tubo carico detersivo spostato più anteriormente
<b>SERVIZIO TECNICO</b>	VASCHE ELIMINATE DA LASOOR	<b>TAB.01 - KIT VASCHE LB 2000 E LB2000 EVIZZATE</b>	
	064513	KIT 092414	
	077330	KIT 092421	
	081827	KIT 092257	
	074217	KIT 092257	
	080661	KIT 092263	
	084591	KIT 092415	
	076778	KIT 092452	
	076850	KIT 092545	
	078876 074134	KIT 092311	

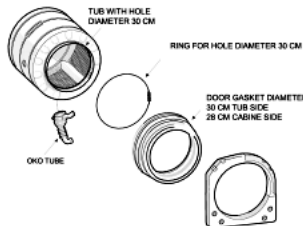
		CUBA LB 2000	CUBA LB 2000 EVIZZATA
<b>EM PRODUÇÃO</b>		Matrículas inferiores (+) 21218.0001 FIG.01 	Matrículas de 21218.0001 a 30311.0001 FIG.02 
	<b>MODIFICAÇÕES</b>		Gaveta detergente, buraco do tubo deslocado anteriormente Eliminado tubo de recuperação de detergente Modificado tubo cuba à bomba (Sistema OKO) Modificada forma do tubo de detergente Cuba, buraco do tubo de detergente deslocado anteriormente
<b>SERVIZIO TECNICO</b>	CUBA A ELIMINAR DA LASOOR	<b>TAB.01 - KIT CUBAS LB 2000 E LB2000 EVIZZATE</b>	
	064513	KIT 092414	
	077330	KIT 092421	
	081827	KIT 092257	
	074217	KIT 092257	
	080661	KIT 092263	
	084591	KIT 092415	
	076778	KIT 092452	
	076850	KIT 092545	
	078876 074134	KIT 092311	

		TUB LB 2000	TUB LB 2000 EVIZZATA
<b>IN PRODUCTION</b>		Serial N. Lower than (-) 21218.0001	Serial N. from 21219.0001 to 30311.0001
		 <p>FIG. 01</p>	 <p>FIG. 02</p>
	<b>CHANGES</b>	Detergent drawer, tube connection shifted of Forwards; Elimination of detergent recovery tube hole Change of sub pipe pump (DKO System) change of shape of detergent loading tub Tub, detergent loading tube hole moved forwards.	
<b>TECHNICAL SERVICE</b>	TUBS TO BE LUBRICATED	<b>TAB.01 – KIT TUBS LB 2000 E LB2000 EVIZZATE</b>	
	064513	KIT 092414	
	077330	KIT 092421	
	081827	KIT 092257	
	074217	KIT 092263	
	080661	KIT 092415	
	084591	KIT 092452	
	076778	KIT 092545	
	076850	KIT 092311	
	078876		
074134			

		CUBA EVO II
<b>EM PRODUÇÃO</b>		<b>Matriculas inferiores (+) 30312.0001</b>
		 <p>FIG. 03</p>
		Modificado diâmetro de abertura da cuba 30 cm em vez de 28 cm Modificada borracha do óculo forma cônica (30 cm lado cuba / 28 cm lado móvel) Modificado anel posterior para diâmetro 30 cm.
<b>SERVIÇO TÉCNICO</b>		<b>TAB. 02 – KIT CUBAS EVO II</b>
		KIT 094273
		KIT 094276
		KIT 094279
		KIT 094281
		KIT 094283
		KIT 094286
		KIT 094287
		KIT 094289

CUBA EVO II									
<b>EN PRODUCCION</b>	<b>Matricola MAYOR (*) 30312.0001</b>  <p style="font-size: small;">Fig. 03</p> <p style="font-size: x-small;">           VASCA CON BOCCA DIAMETRO 30 CM            ANELLO PER BOCCA DIAMETRO 30 CM            GUARNIZIONE OBLI TRONCOCONICA DIAMETRI 30 CM LATO VASCA 28 CM LATO MOBILE            TUBO ORO         </p> <p style="font-size: x-small;">           Modificato diametro bocca di cuba 30 cm in vez de 28 cm            Modificata goma moxilla con forma conica (30 cm en cuba / 28 cm en moxilla) Anillo para diametro 30 cm.         </p>								
	<b>SERVIZIO TECNICO</b>	<table border="1" style="width: 100%; border-collapse: collapse;"> <tr><td style="text-align: center;">KIT 094273</td></tr> <tr><td style="text-align: center;">KIT 094276</td></tr> <tr><td style="text-align: center;">KIT 094279</td></tr> <tr><td style="text-align: center;">KIT 094281</td></tr> <tr><td style="text-align: center;">KIT 094283</td></tr> <tr><td style="text-align: center;">KIT 094286</td></tr> <tr><td style="text-align: center;">KIT 094287</td></tr> <tr><td style="text-align: center;">KIT 094289</td></tr> </table>	KIT 094273	KIT 094276	KIT 094279	KIT 094281	KIT 094283	KIT 094286	KIT 094287
KIT 094273									
KIT 094276									
KIT 094279									
KIT 094281									
KIT 094283									
KIT 094286									
KIT 094287									
KIT 094289									

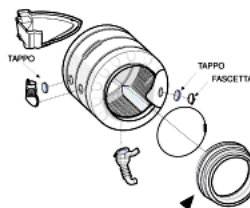
VASCA EVO II									
<b>IN PRODUZIONE</b>	<b>Matricola Maggiore (*) 30312.0001</b>  <p style="font-size: small;">Fig. 03</p> <p style="font-size: x-small;">           VASCA CON BOCCA DIAMETRO 30 CM            ANELLO PER BOCCA DIAMETRO 30 CM            GUARNIZIONE OBLI TRONCOCONICA DIAMETRI 30 CM LATO VASCA 28 CM LATO MOBILE            TUBO ORO         </p> <p style="font-size: x-small;">           Modificato diametro bocca vasca 30 cm invece di 28 cm            Modificata guarnizione obli di forma tronco-conica (30 cm lato vasca / 28 cm lato mobile)            Modificato anello posteriore per diametro 30 cm.         </p>								
	<b>SERVIZIO TECNICO</b>	<p style="text-align: center;"><b>TAB. 02 – KIT VASCHE EVO II</b></p> <table border="1" style="width: 100%; border-collapse: collapse;"> <tr><td style="text-align: center;">KIT 094273</td></tr> <tr><td style="text-align: center;">KIT 094276</td></tr> <tr><td style="text-align: center;">KIT 094279</td></tr> <tr><td style="text-align: center;">KIT 094281</td></tr> <tr><td style="text-align: center;">KIT 094283</td></tr> <tr><td style="text-align: center;">KIT 094286</td></tr> <tr><td style="text-align: center;">KIT 094287</td></tr> <tr><td style="text-align: center;">KIT 094289</td></tr> </table>	KIT 094273	KIT 094276	KIT 094279	KIT 094281	KIT 094283	KIT 094286	KIT 094287
KIT 094273									
KIT 094276									
KIT 094279									
KIT 094281									
KIT 094283									
KIT 094286									
KIT 094287									
KIT 094289									

TUB EVO II	
IN PRODUCTION	Serial N. Bigger than (*) 30312.0001 <b>FIG. 03</b> 
	Changed diameter of tubhole from 30 cm to 28 cm; Changed door basket, truncated cone-sharped, (30 cm tub side / 28 cm cabinet side); Changed rear ring for 30 cm diameter.
TECHNICAL SERVICE	<b>TAB. 02 – KIT TUBS EVO II</b>
	<b>KIT 094273</b>
	<b>KIT 094276</b>
	<b>KIT 094279</b>
	<b>KIT 094281</b>
	<b>KIT 094283</b>
	<b>KIT 094286</b>
<b>KIT 094287</b>	
<b>KIT 094289</b>	

**TAB. 03  
COMPOSIZIONE DEI KIT**

KIT VASCHE LB 2000 E LB 2000 EVIZZATE		KIT VASCHE EVO II	
Cod. kit	Composto da:	Cod. kit	Composto da:
092414	094272 Vasca SAT EVO II + kit 093772	094273	094272 Vasca SAT EVO II + kit 094275
092421	094277 Vasca SAT EVO II + kit 094097	094276	094277 Vasca SAT EVO II + kit 094275
092257	094278 Vasca SAT EVO II + kit 093772	094279	094278 Vasca SAT EVO II + kit 094275
092263	094280 Vasca SAT EVO II + kit 094097	094281	094280 Vasca SAT EVO II + kit 094275
092415	094282 Vasca SAT EVO II + kit 093772	094283	094282 Vasca SAT EVO II + kit 094275
092452	094285 Vasca SAT EVO II + kit 093772	094286	094285 Vasca SAT EVO II + kit 094275
092545	094288 Vasca SAT EVO II + kit 093772	094287	094288 Vasca SAT EVO II + kit 094275
092311	094290 Vasca SAT EVO II + kit 094096	094289	094290 Vasca SAT EVO II + kit 094275
Cod. kit	Composto da:	Cod. kit	Composto da:
093345	093345 - GUARNIZ. OBLO STANDARD EVIZZ.EVOR;	027924	TAPPO CARICO DETERGIVO;
093772	092190 - ANELLO POSTI. FISS. GUARNIZIONE;	091148	FASCETTA TAPPO FORO REC. DETERGIVO;
	027924 - TAPPO CARICO DETERGIVO;	091901	TAPPO FORO TUBO RECUPERO DETERS.
	091148 - FASCETTA TAPPO TUBO REC. DETERGIVO;		
	091901 - TAPPO FORO TUBO RECUPERO DETERS.		
	094097 - GUARNIZ. OBLO STD INCL. IND. EVIZZ.EVOR;	094093	094093 - GUARNIZ. OBLO SNELLA EVIZZ. EVOR;
094097	092190 - ANELLO POSTI. FISS. GUARNIZIONE;	092190	092190 - ANELLO POSTI. FISS. GUARNIZIONE;
	027924 - TAPPO CARICO DETERGIVO;	027924	027924 - TAPPO CARICO DETERGIVO;
	091148 - FASCETTA TAPPO TUBO REC. DETERS.	091148	091148 - FASCETTA TAPPO REC. DETERS.
	091901 - TAPPO FORO TUBO RECUPERO DETERS.	091901	091901 - TAPPO FORO RECUPERO DETERS.

**FIG. 04  
VASCHE SAT**

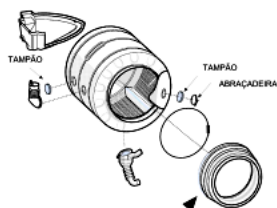


IMPIEGANDO LA VASCA SAT SU MODELLI LB 2000 E LB 2000 EVIZZATE OCCORRE OBBLIGATORIAMENTE  
APPLICARE PRIMA LA GUARNIZIONE OBLO E SUCCESSIVAMENTE IL CONTRAPPESO ANTERIORE.

**TAB. 03  
COMPOSIZIONE DOS KIT**

KIT CUBAS LB 2000 E LB 2000 EVIZZATE		KIT CUBAS EVO II	
Cod. kit	Composto por:	Cod. kit	Composto por:
092414	094272 CUBA SAT EVO II + RR 093772	094273	094272 CUBA SAT EVO II + RR 094275
092421	094277 CUBA SAT EVO II + RR 094097	094276	094277 CUBA SAT EVO II + RR 094275
092257	094278 CUBA SAT EVO II + RR 093772	094279	094278 CUBA SAT EVO II + RR 094275
092263	094290 CUBA SAT EVO II + RR 094097	094281	094290 CUBA SAT EVO II + RR 094275
092415	094282 CUBA SAT EVO II + RR 093772	094283	094282 CUBA SAT EVO II + RR 094275
092452	094285 CUBA SAT EVO II + RR 093772	094286	094285 CUBA SAT EVO II + RR 094275
092545	094298 CUBA SAT EVO II + RR 093772	094287	094286 CUBA SAT EVO II + RR 094275
092311	094290 CUBA SAT EVO II + RR 094098	094289	094290 CUBA SAT EVO II + RR 094275
Cod. kit	Composto por:	Cod. kit	Composto por:
093772	093345 - BORRACHA DO OCULO LB STANDARD; 092195 - ANEL DE TENSÃO POSTERIOR; 027924 - TAPON CUBA; 091148 - ABRAZADERA D=79 MM; 091901 - TAPON CUBA X TUBO DE RECUP. DETER.	094275	027924 - TAPON CUBA; 091148 - ABRAZADERA D=79 MM; 091901 - TAPON CUBA X TUBO DE RECUPERAÇÃO DETER.
094097	094091 - BORRACHA DO OCULO WD. EVIZZ EVO II; 092195 - ANEL DE TENSÃO POSTERIOR; 027924 - TAPON CUBA; 091148 - ABRAZADERA D=79 MM; 091901 - TAPON CUBA X TUBO DE RECUPERAÇÃO DETER.	094098	094093 - BORRACHA DO OCULO LB ALB-EXCZ EVO II; 092195 - ANEL DE TENSÃO POSTERIOR; 027924 - TAPON CUBA; 091148 - ABRAZADERA D=79 MM; 091901 - TAPON CUBA X TUBO DE RECUP. DETER.

**FIG. 04  
CUBAS SAT**

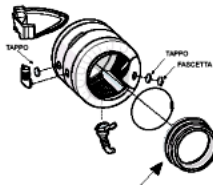


QUANDO SE UTILIZA A CUBA SAT NOS MODELOS LB2000 E LB 2000 EVIZZATE, TER ATENÇÃO QUE EM PRIMEIRO LUGAR SE DEVE COLOCAR A BORRACHA DO OCULO E DE SEGUIDA O CONTRAPESO ANTERIOR.

**TAB. 01**

COMPOSIZIONE DE LOS KIT			
Cód. kit	Composto por:	Cód. kit	Composto por:
092414	094272 CUBA EVO II + RR 093772	094273	094272 CUBA EVO II + RR 094275
092421	094277 CUBA EVO II + RR 094097	094276	094277 CUBA EVO II + RR 094275
092257	094278 CUBA EVO II + RR 093772	094279	094278 CUBA EVO II + RR 094275
092263	094290 CUBA EVO II + RR 094097	094281	094290 CUBA EVO II + RR 094275
092415	094282 CUBA EVO II + RR 093772	094283	094282 CUBA EVO II + RR 094275
092452	094285 CUBA EVO II + RR 093772	094286	094285 CUBA EVO II + RR 094275
092545	094298 CUBA EVO II + RR 093772	094287	094286 CUBA EVO II + RR 094275
092311	094290 CUBA EVO II + RR 094098	094289	094290 CUBA EVO II + RR 094275
Cód. kit	Composto por:	Cód. kit	Composto por:
093772	093345 - GUARNIZ. OROLO STANDARD EVIZZ-EVO II; 092195 - ANELLO POST. FISS. GUARNIZIONE; 027924 - TAPPO CARICO DETER.SIVO; 091148 - FASCETTA TAPPO TUBO REC. DETER.SIVO; 091901 - TAPPO FORO TUBO RECUPERO DETER.SIVO.	094275	027924 - TAPPO CARICO DETER.SIVO; 091148 - FASCETTA TAPPO TUBO REC. DETER.SIVO; 091901 - TAPPO FORO TUBO RECUPERO DETER.SIVO.
094097	094091 - GUARNIZ. OROLO WD. EVIZZ-EVO II; 092195 - ANELLO POST. FISS. GUARNIZIONE; 027924 - TAPPO CARICO DETER.SIVO; 091148 - FASCETTA TAPPO TUBO REC. DETER.SIVO; 091901 - TAPPO FORO TUBO RECUPERO DETER.SIVO.		
094098	094093 - GUARNIZ. OROLO SNELLA EVIZZ-EVO II; 092195 - ANELLO POST. FISS. GUARNIZIONE; 027924 - TAPPO CARICO DETER.SIVO; 091148 - FASCETTA TAPPO TUBO REC. DETER.SIVO; 091901 - TAPPO FORO TUBO RECUPERO DETER.SIVO.		

**FIG. 04  
VASCHE SAT**



IMPREGNANDO LA VASCA SAT SU MODELLI LB 2000 E LB 2000 EVIZZATE OCCORRE OBBLIGATORIAMENTE APPLICARE PRIMA LA GUARNIZIONE OROLO E SUCCESSIVAMENTE IL CONTRAPPESO ANTERIORE.

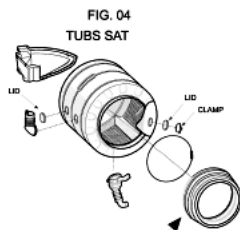
n1040300: Short heating element for 46 l.

From serial number 30606.0001, all washing machines with 46 litre tubs, codes 094283, 094273 and 094279, have been equipped with shorter heating elements, which required the heater retaining bracket hole to be moved back (see fig. 01).

As the tub replacement mainly concerns premodification appliances, it was decided that with those supplied as replacements the retaining bracket will remain in the old position. Therefore, if the tub needs replacing, it will not be necessary to also replace the heating element or make the hole and position the retaining bracket.

**TAB. 03  
KIT COMPOSITION**

KIT TUBS LB 2000 AND LB 2000 EVIZZATE		KIT TUBS EVO II	
Kit Cod.	Made of:	Kit Cod.	Made of:
092414	094272 Tub SAT EVO II + kit 093772	094273	094272 Tub SAT EVO II + kit 094275
092421	094277 Tub SAT EVO II + kit 094097	094276	094277 Tub SAT EVO II + kit 094275
092257	094278 Tub SAT EVO II + kit 093772	094279	094278 Tub SAT EVO II + kit 094275
092263	094290 Tub SAT EVO II + kit 094097	094281	094290 Tub SAT EVO II + kit 094275
092415	094282 Tub SAT EVO II + kit 093772	094283	094282 Tub SAT EVO II + kit 094275
092452	094285 Tub SAT EVO II + kit 093772	094286	094285 Tub SAT EVO II + kit 094275
092545	094288 Tub SAT EVO II + kit 093772	094287	094288 Tub SAT EVO II + kit 094275
092311	094290 Tub SAT EVO II + kit 094098	094289	094290 Tub SAT EVO II + kit 094275
Kit Cod.	Made of:	Kit Cod.	Made of:
093345	DOOR BELLOWS SEAL STD EVIZZ EVOII	094993	DOOR BELLOWS SEAL LB ALS - WS- EVOII
092158	BELLOWS CLAMP (TANK FRONT)	092158	BELLOWS CLAMP (TANK FRONT)
027824	BLANKING PLUG	027824	BLANKING PLUG
091148	CLAMP D=79MM	091148	CLAMP D=79MM
091991	BLANKING PLUG DET. RECOVERYHOSE	091991	BLANKING PLUG DET. RECOVERYHOSE
094097		094098	
094091	DOOR BELLOWS SEAL WOEIIZZ EVOII		
092158	BELLOWS CLAMP (TANK FRONT)		
027824	BLANKING PLUG		
091148	CLAMP D=79MM		
091991	BLANKING PLUG DET. RECOVERYHOSE		



WHILE USING SAT TUB INTO MODEL LB2000 AND LB2000 EVIZZAE, THE DOOR GASKET MUST BE APPLIED AND LATER ON THE FRONT NOTERWIGHT.

When replacing the heating element pay particular attention to the serial number of the appliance and therefore the choice of the SAT code.

Codes of short heating elements:

Washing machine

Code 087188 - HEATING ELEMENT+ F. PROBE 1700W/230V 169.5IDC

Washer-dryer

Code 066086 - HEATING ELEMENT WITH THERMOFUSE 1700W / 230V+T

Codes of premodification long heating elements:

Washing machine

Code 086661 - IDC HEATING ELEMENT + PROBE1700W 230V L212.5MM;

Washer-dryer

Code 064556 - WASHER-DRYER HEATING ELEMENT WITH THERMOFUSE 1700W / 230V+TE

The new heating elements have been included in the documentation of all models affected by this modification.

If the heating element retaining bracket needs to be shifted, it must be removed and then the new hole must be made in the tub using a 4.2 mm bit, taking into account that the distance between the two holes must in any case be 43 mm.

To plug the old hole use the s/steel TMT M4 X 12 screw (screw kit code 037132) with vellumoid washer and the self-locking flanged nut code 037135, bearing in mind that the head of the screw must protrude and that its tightening must not cause the vellumoid gasket supplied with the screw to break.

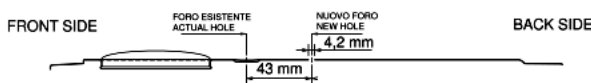


FIG. 01

n1040325: New shock absorber fixing system with pin

---

From serial no. 40427.0001, shock absorbers have been fixed to the tank unit cradle with two 11 mm pins code C00110163 (see fig. 01 and 02 enclosed) in place of the 8 mm screws code 093750 and relevant locking nuts code 030443, on all washing machines and dryers produced in the Comunanza factory.

The items affected by this modification are:

1) The cradles have the same Service code, as they can be used in place of the new ones after widening the shock absorber fixing holes to a diameter of 10 mm.

Code 093848 - Tank unit cradle 46 lt

Code 093878 - Tank unit cradle 40 lt.

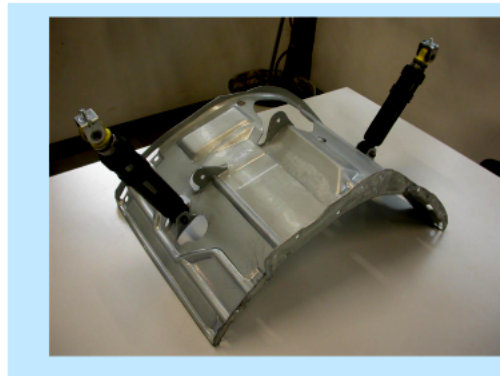
2) The new shock absorbers, with fixing bushing having no s/steel spacer, are not managed as they are interchangeable with the premodified items (make sure they are CIMA type, as the managed items), fixed with M8 screws code 093750 and related locking nut code 030443 (see figs. 05 and 06).

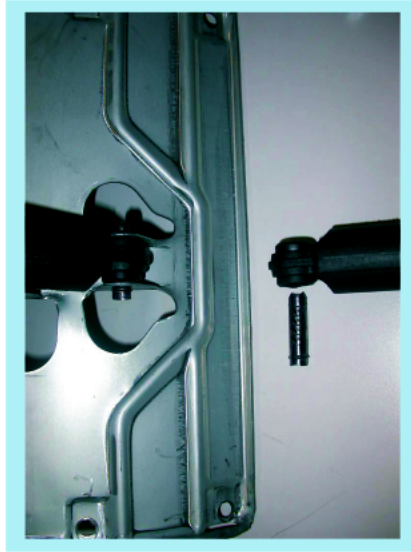
Code 093884 - Shock absorber 80 N

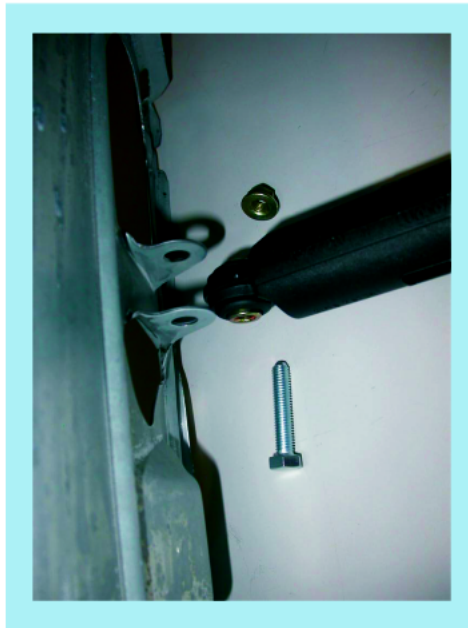
Code 093885 - Shock absorber 100 N

To remove the shock absorber from the tank, first extract the pin with a few hammer taps (see fig.03) until it is aligned with the tank bracket and then pull it out with a pair of pliers (see fig. 04).

(To refit the shock absorber use a new pin. Insert the pin until the toroidal edge is aligned with the bracket.)



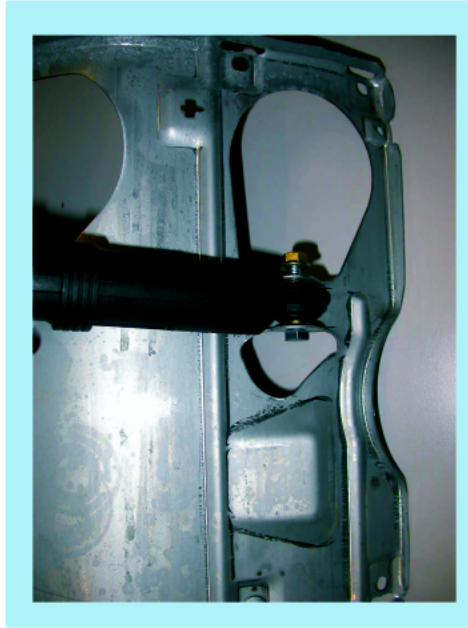




n1040349: Introduction of 150° Zamac hinge on Ariston 46 models.

---

From serial no. 50207.0001, all Ariston models produced in the Teverola factory (see table 001 attached) with industrial code (given on the rating plate) starting with 46, have been equipped with a Zamac hinge with 150° opening angle, code C00115666



(see Fig.001).

This modification has involved the introduction of the following items:

Code C00115670 - Complete door EVOII 150° white 27 with standard glass;

Code C00115674 - Complete door EVOII 150° white 27 with long glass;

Code C00115667 - EVOII body for 150° hinge white 27;

The premodified items are not interchangeable separately with the modified ones.

Code C00110133 - Complete door EVOII Standard 180° white 27 standard glass;

Code C00092157 - Complete door EVOII 180° white 27 long glass;

Code C00096193 - EVOII body for 150° hinge white 27;

The hinge code C00064541 continues to be used on the build-under models produced in the Comunanza factory.

Model	Code	CABINET		DOOR				HINGE	
		180°	150°	180°	150°	180°	150°	180°	150°
		C00096193	C00115667	C00092157	C00115670	C00110133	C00115674	C00064541	C00115666
AVL 82 (TK)	28479	X	X	X	X			X	X
AVL 85 (TK)	28480	X	X	X	X			X	X
AVL 102 (TK)	28481	X	X	X	X			X	X
AVL 105 (TK)	28482	X	X	X	X			X	X
AVD 10 (TK)	28485	X	X	X	X			X	X
AVL 125 (EU)	29774	X	X	X	X			X	X
AVL 62 (EX)	29775	X	X	X	X			X	X
AV 61 (EU)	29890	X	X			X	X	X	X
AVL 6 E (IT)	30055	X	X	X	X			X	X
AVL 62 (EX)60HZ 40-F	30062	X	X	X	X			X	X
AVL 61 (EX)115-60	30063	X	X			X	X	X	X
AV 51 (EX) 50-60	30064	X	X			X	X	X	X
AV 41 (EX) 50-60	30065	X	X			X	X	X	X
AV 41 (AG) 50-60	30066	X	X			X	X	X	X
AV 51 (AG) 50-60	30067	X	X			X	X	X	X
AVL 86 P (IT)	30093	X	X	X	X			X	X
AVL 105 (SK)	30206	X	X	X	X			X	X
AVL 100 P ( R )	30357	X	X	X	X			X	X
AVL 95 (AUS)	30361	X	X	X	X			X	X
AV 51 (EO)	30498	X	X			X	X	X	X
AVL 65 (PT)	30612	X	X	X	X			X	X
AV 102 (CSI)	31970	X	X	X	X			X	X
AV 40 (AG) 50-60	32303	X	X			X	X	X	X
AVL 145 (DE) (TE)	33180	X	X	X	X			X	X
AV 42 (EX) 50-60	33217	X	X			X	X	X	X
AV 52 (EX) 50-60	33218	X	X			X	X	X	X
AVL 62 (EO)	33244	X	X	X	X			X	X
AVL 145 (EU) (TE)	33612	X	X	X	X			X	X
AVL 62 (KW)	33685	X	X	X	X			X	X
AV 62 (EU)	33968	X	X	X	X			X	X
AVF 10 (TK)	33979	X	X	X	X			X	X
AVF 8 (TK)	34214	X	X	X	X			X	X
AVF 149 (EU)	34217	X	X	X	X			X	X
AVL 135 (FR) (TE)	34239	X	X	X	X			X	X
AVL 140 (FR) (TE)	34240	X	X	X	X			X	X
AVL 14 (FR)	34479	X	X	X	X			X	X
AV 8 (IT)	35974	X	X	X	X			X	X
AV 10 (IT)	35975	X	X	X	X			X	X

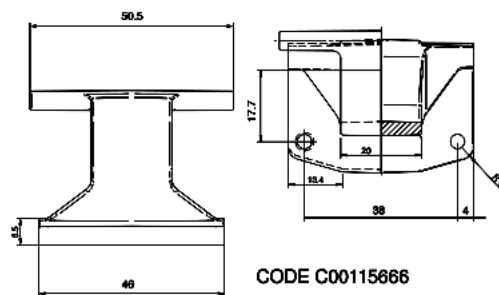


Fig . 001

n1040371: The T4 mechanism type 4.

From serial number 30612.0001, the T4 mechanism has been introduced on some oscillating units. The new tub units are perfectly interchangeable with the premodification ones and therefore maintain the same SAT codes.

The modification especially concerns the basket cross element and the tub cross element assembly that are specific for the new mechanism.

For servicing the products both the premodification tub cross element assembly (code 074213) and the new assembly (cod. 096077) must be managed; their use is indicated by the serial number of the relevant product.

The relevant Sat codes are:

TUBS (they maintain same SAT code as the premodification parts).

Models “Evizzati “ Serial number > 30312.0001 and < 30616.0001

SAT code 094279 TUB 46L.B5 CV5 EVO II 1200 rpm;

SAT code 094281 TUB 46 L. B5-CV5 LD EVO II 1200 rpm LD;

SAT code 094287 Tub 40 litres b5-cv5 40 litres 1200-1400 rpm;.

Models Serial number <30312.0001 and > 30616.0001.

Cod. SAT 092257 OUTER TANK & INNER DRUM ASSY B5 CV5

Cod, SAT 092263 OUTER- SET 46 L. CV5-B5 LD;

Cod. SAT 092545 OUTER TANK & INNER DRUM ASSY 40 L B5 CV5

CROSS ELEMENT ASSEMBLY AND SINGLE PARTS MANAGED AS REPLACEMENTS.

SAT code 096077 Cross element assembly with seal rings CV4;

SAT code 096186 Seal ring CV4;

SAT code 013563 Bearing 6205-2Z SKF;

SAT Code 002591 - Bearing 6204-2Z SKF;

On 1200 rpm models, which indicate replacement of the drum with spider in aluminium, with a spider in red ghisa (LVA cod. C00094280 and LVB cod. C00094282), the following procedure will need to be followed:

- 1) Remove the upper counter-weight;
- 2) Position the balancing springs inside the support holes found further back than the previous position on the cabinet (see fig.001);
- 3) Affix the shock absorbers on the support holes positioned on the back part of the cabinet (see fig.002).

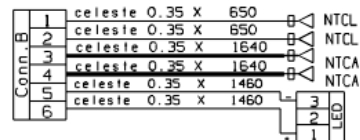
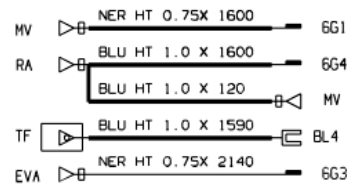
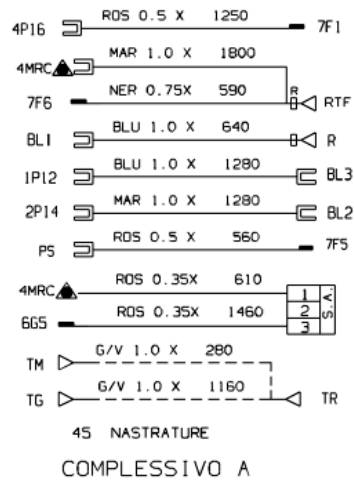
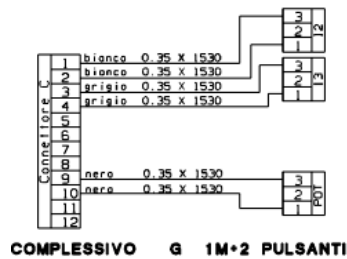
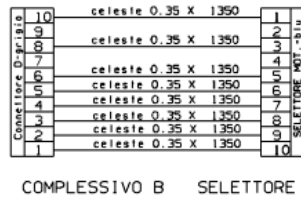
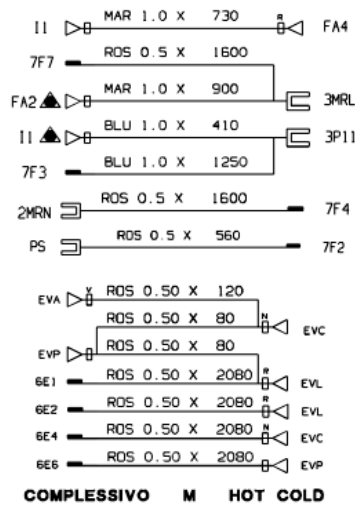




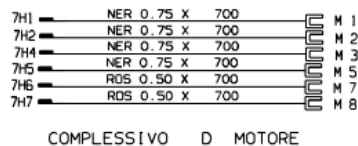
Electric schemes and links

Cod. 16001540500

IDC



COMPL. "P" X MOD. LAVASCIUGA



16001540500

## Legend

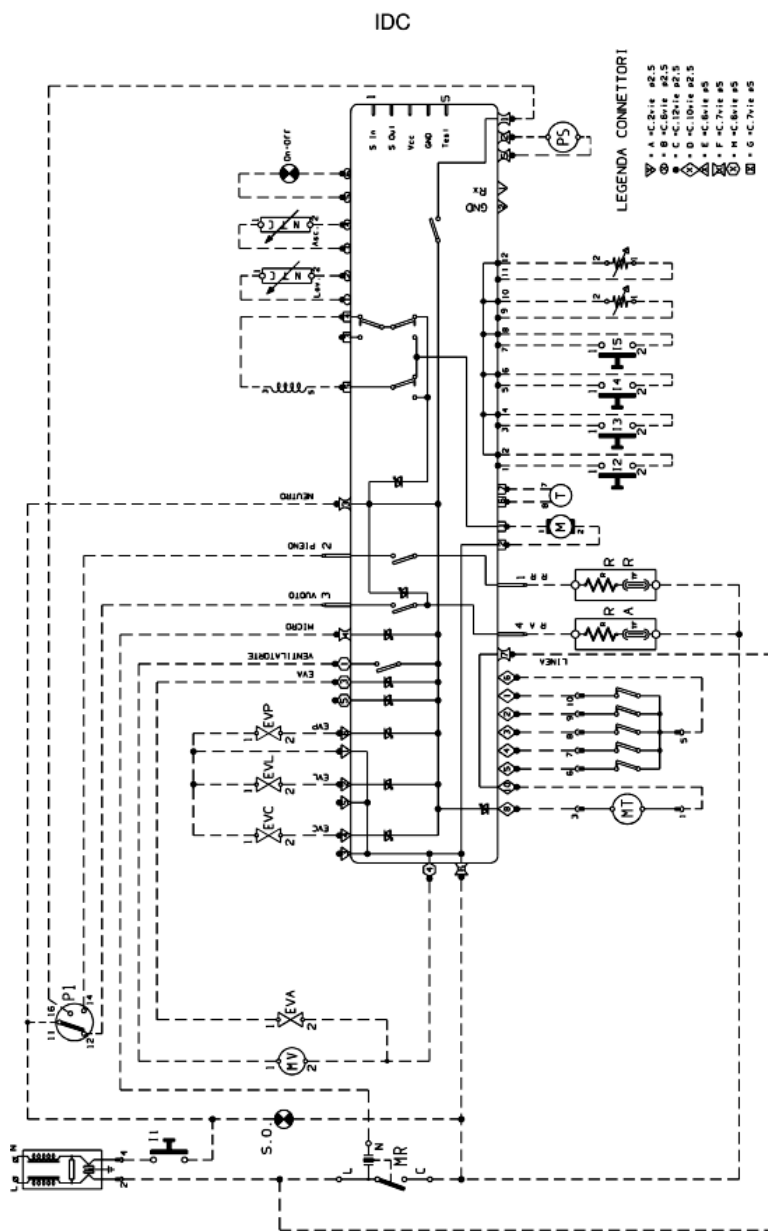
Legend: 16001540500

AQS	Aquastop electrovalve	Mzbn/MTA	zbn timer motor
B	Buzzer	N	Neutral or Terminal Board
BC	Blocco Cesto	NC	Spin cycle exclusion
BF	Terminal board contact, motor fan and dryer	P	Pressure switch
BP	Buzzer	P1	1st level pressure cut-off switch
C	Condensator	P2	2nd level pressure cut-off switch
CA	Condensator	PA	High speed potentiometer
DV	Switching device	PB	Low speed potentiometer
EF/CL	Electro-Valve Cold Water / Bleach	PL	Pure Wool
EF/L	Electro-Valve Cold Water / Wash	PM	Motor Thermoprotector
EF/P	Electro-Valve Cold Water / Prewash	PR	Timer programmer or Pressure switch
ER	Exclude Heating Element	PS	Drain pump
ET	Thermostat disactivation	R	Heating element
EV	Electrovalve	RE	Relay
EVA	Dryer electrovalve	RR	Heating element
EVC	Hot water electrovalve	RV	Speed regulator
EVF	Elettrovalvola acqua fredda	Ras/RA	Dryer heating element
EVL	Wash electrovalve	S	LED
EVP	Pre Wash electrovalve	SL	Line LED
FA	Antijamming filter	SO	Door LED
FD	Delicate drying cycle thermostat	SR	Heating LED
FE	Strong drying cycle thermostat	ST	Temperature selector
FRT	Thermofusible Heating Element	SV	Speed Selector for Spin
I	Inverter	T	Timer contacts
II..2..3..	Switches/switching devices	TA	Drying timer contacts
IA	Switch On/Off	TB	Low Temperature Thermostat
IC	Switch N.C. - 1/2 Load	TC	Spider wheel earth
ID	Switch display	TFL	Flange earth
IE	Water Saving Device	TG	Main earth
IF	Switch - Spin Reduction	TH	Thermostat
IP	Door switch	TH1	1st temperature thermostat
IR	Line switch	TH2	2nd temperature thermostat
IS	Water-stop	TH3	3rd temperature thermostat

L	Line or Lamp	THF	Operating thermostat
LB	Low Level	THR	Adjustable thermostat
LN	Normal Level	TM	Motor earth
LS	Pilot lamp	TMB	Main cabinet earth
M	Earth-symbol	TMP	Motor thermal protector
MC	Spin cycle motor	TMS	Thermostop
MI	MOTOR WITH PULLEY	TP	Thermal protector
ML	Wash cycle motor	TPS	Drain pump earth
MO	Terminal Board	TR	Heating element earth
MP	Door dip-switch	TS	Safety thermostat
MR	Thermal Lock	TT	Timer earthing connection
MT	Timer motor	TTH	Earthing Thermostat
MV	Motor fan	TV	Tank earth
MV -Ras	Dryer heating element	ZBN	Timer

Electric schemes and links

Cod. 16001542800



## Legend

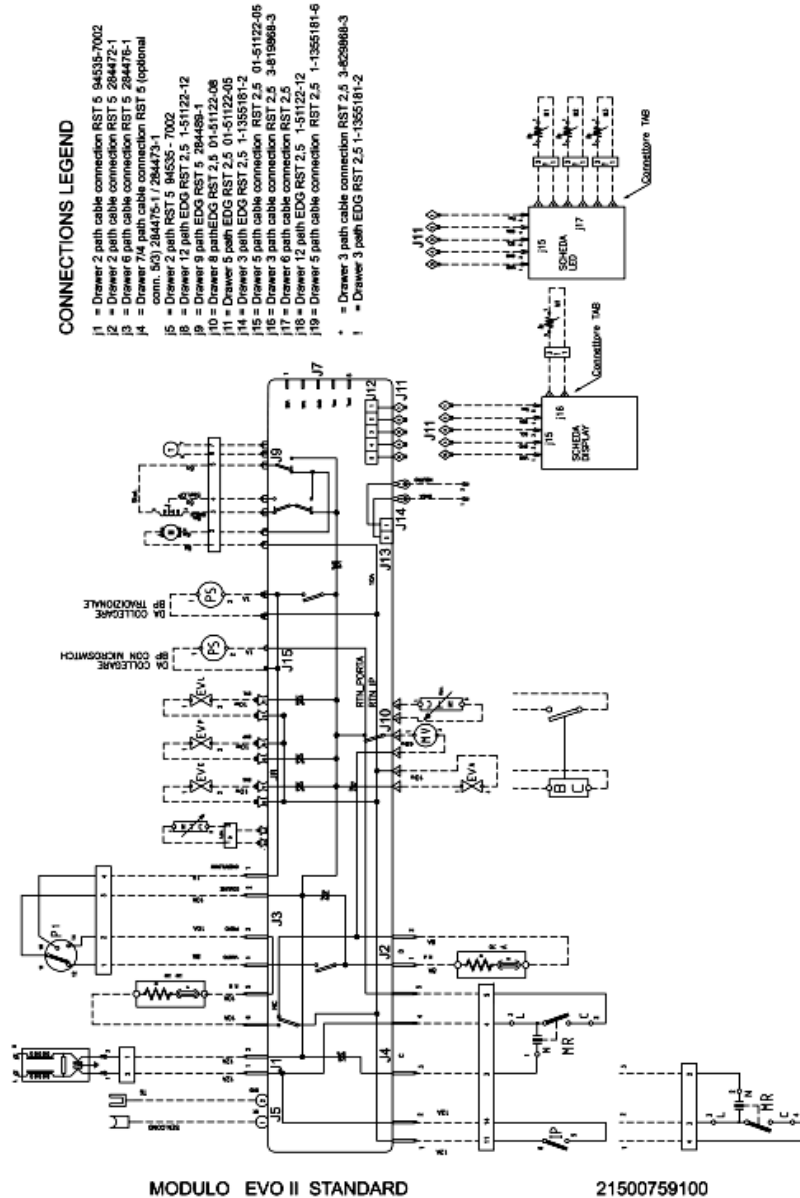
Legend: 16001542800

AQS	Aquastop electrovalve	Mzbn/MTA	zbn timer motor
B	Buzzer	N	Neutral or Terminal Board
BC	Blocco Cesto	NC	Spin cycle exclusion
BF	Terminal board contact, motor fan and dryer	P	Pressure switch
BP	Buzzer	P1	1st level pressure cut-off switch
C	Condensator	P2	2nd level pressure cut-off switch
CA	Condensator	PA	High speed potentiometer
DV	Switching device	PB	Low speed potentiometer
EF/CL	Electro-Valve Cold Water / Bleach	PL	Pure Wool
EF/L	Electro-Valve Cold Water / Wash	PM	Motor Thermoprotector
EF/P	Electro-Valve Cold Water / Prewash	PR	Timer programmer or Pressure switch
ER	Exclude Heating Element	PS	Drain pump
ET	Thermostat disactivation	R	Heating element
EV	Electrovalve	RE	Relay
EVA	Dryer electrovalve	RR	Heating element
EVC	Hot water electrovalve	RV	Speed regulator
EVF	Elettrovalvola acqua fredda	Ras/RA	Dryer heating element
EVL	Wash electrovalve	S	LED
EVP	Pre Wash electrovalve	SL	Line LED
FA	Antijamming filter	SO	Door LED
FD	Delicate drying cycle thermostat	SR	Heating LED
FE	Strong drying cycle thermostat	ST	Temperature selector
FRT	Thermofusible Heating Element	SV	Speed Selector for Spin
I	Inverter	T	Timer contacts
II..2..3..	Switches/switching devices	TA	Drying timer contacts
IA	Switch On/Off	TB	Low Temperature Thermostat
IC	Switch N.C. - 1/2 Load	TC	Spider wheel earth
ID	Switch display	TFL	Flange earth
IE	Water Saving Device	TG	Main earth
IF	Switch - Spin Reduction	TH	Thermostat
IP	Door switch	TH1	1st temperature thermostat
IR	Line switch	TH2	2nd temperature thermostat
IS	Water-stop	TH3	3rd temperature thermostat

L	Line or Lamp	THF	Operating thermostat
LB	Low Level	THR	Adjustable thermostat
LN	Normal Level	TM	Motor earth
LS	Pilot lamp	TMB	Main cabinet earth
M	Earth-symbol	TMP	Motor thermal protector
MC	Spin cycle motor	TMS	Thermostop
MI	MOTOR WITH PULLEY	TP	Thermal protector
ML	Wash cycle motor	TPS	Drain pump earth
MO	Terminal Board	TR	Heating element earth
MP	Door dip-switch	TS	Safety thermostat
MR	Thermal Lock	TT	Timer earthing connection
MT	Timer motor	TTH	Earthing Thermostat
MV	Motor fan	TV	Tank earth
MV -Ras	Dryer heating element	ZBN	Timer

Cod. 21500759100

Electric schemes and links



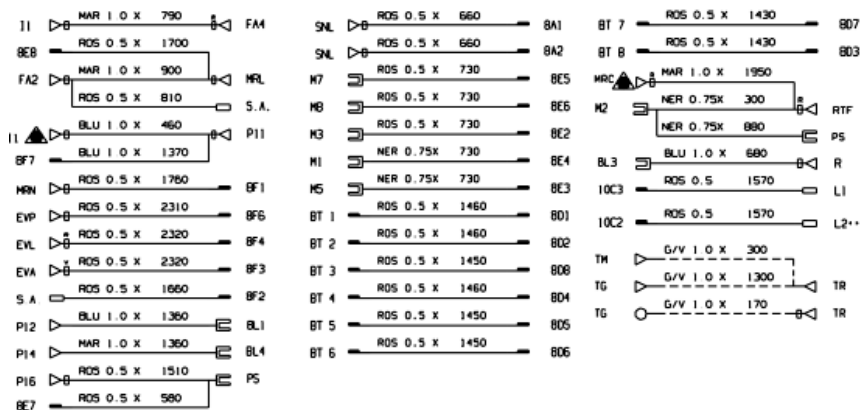
## Legend

Legend: 21500759100

Electric schemes and links

Cod. ce030500

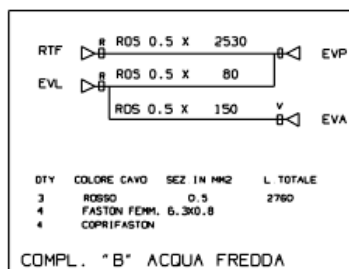
CE030500



10C7	RDS 0.5 X	1640	15-3
10C6	RDS 0.5 X	1620	14-3
10C5	RDS 0.5 X	1600	13-3
10C4	RDS 0.5 X	1580	12-3
10C1	RDS 0.5 X	1580	12-1
13-2	RDS 0.5 X	100	12-2
13-1	RDS 0.5 X	100	14-1
15-2	RDS 0.5 X	100	14-2

QTY	COLORE CAVO	SEZ. IN MM2	L. TOTALE
8	ROSSO	0.5	8260
11	FASTON X CONN. MOLEX 94539-1000		
5	FASTON PER CIRCUITO STAMP. MOLEX		
4	CONNETTORI MOLEX 94539-9003		

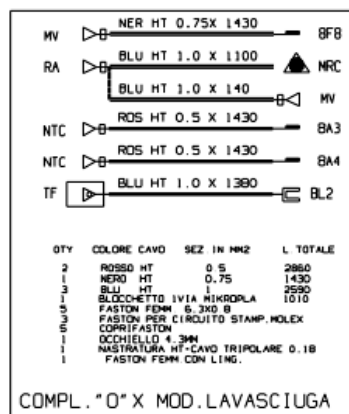
COMPL. "I" X MOD. 1+4 PULSANTI



PA	RDS 0.5 X	1630	BA5
PA	RDS 0.5 X	1630	BA6

QTY	COLORE CAVO	SEZ. IN MM2	L. TOTALE
2	ROSSO	0.5	3260
4	FASTON PER CIRCUITO STAMP. MOLEX		
1	CONNETTORE 2 VIE MOLEX 94529/9102		

COMPL. "D" 2° MANOPOLA



PB	RDS 0.5 X	1790	BA7
PB	RDS 0.5 X	1790	BA8

QTY	COLORE CAVO	SEZ. IN MM2	L. TOTALE
2	ROSSO	0.5	3590
4	FASTON PER CIRCUITO STAMP. MOLEX		
1	CONNETTORE 2 VIE MOLEX 94529/9102		

COMPL. "E" 3° MANOPOLA

## Legend

Legend: ce030500

B	Buzzer	N	Neutral or Terminal Board
BF	Terminal board contact, motor fan and dryer	NC	Spin cycle exclusion
BP	Buzzer	P	Pressure switch
C	Condensator	P1	1st level pressure cut-off switch
CA	Condensator	P2	2nd level pressure cut-off switch
DV	Switching device	PA	High speed potentiometer
EF/CL	Electro-Valve Cold Water / Bleach	PB	Low speed potentiometer
EF/L	Electro-Valve Cold Water / Wash	PL	Pure Wool
EF/P	Electro-Valve Cold Water / Prewash	PM	Motor Thermoprotector
ER	Exclude Heating Element	PR	Timer programmer
ET	Thermostat disactivation	PS	Drain pump
EV	Electrovalve	R	Heating element
EVA	Dryer electrovalve	RE	Relay
EVC	Hot water electrovalve	RR	Heating element
EVF	Elettrovalvola acqua fredda	RV	Speed regulator
EVL	Wash electrovalve	Ras/RA	Dryer heating element
EVP	Pre Wash electrovalve	S	LED
FA	Antijamming filter	SL	Line LED
FD	Delicate drying cycle thermostat	SO	Door LED
FE	Strong drying cycle thermostat	SR	Heating LED
FRT	Thermofusible Heating Element	ST	Temperature selector
I	Inverter	SV	Speed Selector for Spin
II...2...3..	Switches/switching devices	T	Timer contacts
IA	Switch On/Off	TA	Drying timer contacts
IC	Switch N.C. - 1/2 Load	TB	Low Temperature Thermostat
ID	Switch display	TC	Spider wheel earth
IE	Water Saving Device	TFL	Flange earth
IF	Switch - Spin Reduction	TG	Main earth
IP	Door switch	TH	Thermostat
IR	Line switch	TH1	1st temperature thermostat
IS	Water-stop	TH2	2nd temperature thermostat
L	Line or Lamp	TH3	3rd temperature thermostat
LB	Low Level	THF	Operating thermostat

LN	Normal Level	THR	Adjustable thermostat
LS	Pilot lamp	TM	Motor earth
M	Earth-symbol	TMB	Main cabinet earth
MC	Spin cycle motor	TMP	Motor thermal protector
MI	MOTOR WITH PULLEY	TMS	Thermostop
ML	Wash cycle motor	TP	Thermal protector
MO	Terminal Board	TPS	Drain pump earth
MP	Door dip-switch	TR	Heating element earth
MR	Thermal Lock	TS	Safety thermostat
MT	Timer motor	TT	Timer earthing connection
MV	Motor fan	TTH	Earthing Thermostat
MV -Ras	Dryer heating element	TV	Tank earth
Mzbn/MTA	zbn timer motor	ZBN	Timer

## Electric schemes and links

Cod. Ig036500



## Legend

Legend: lg036500

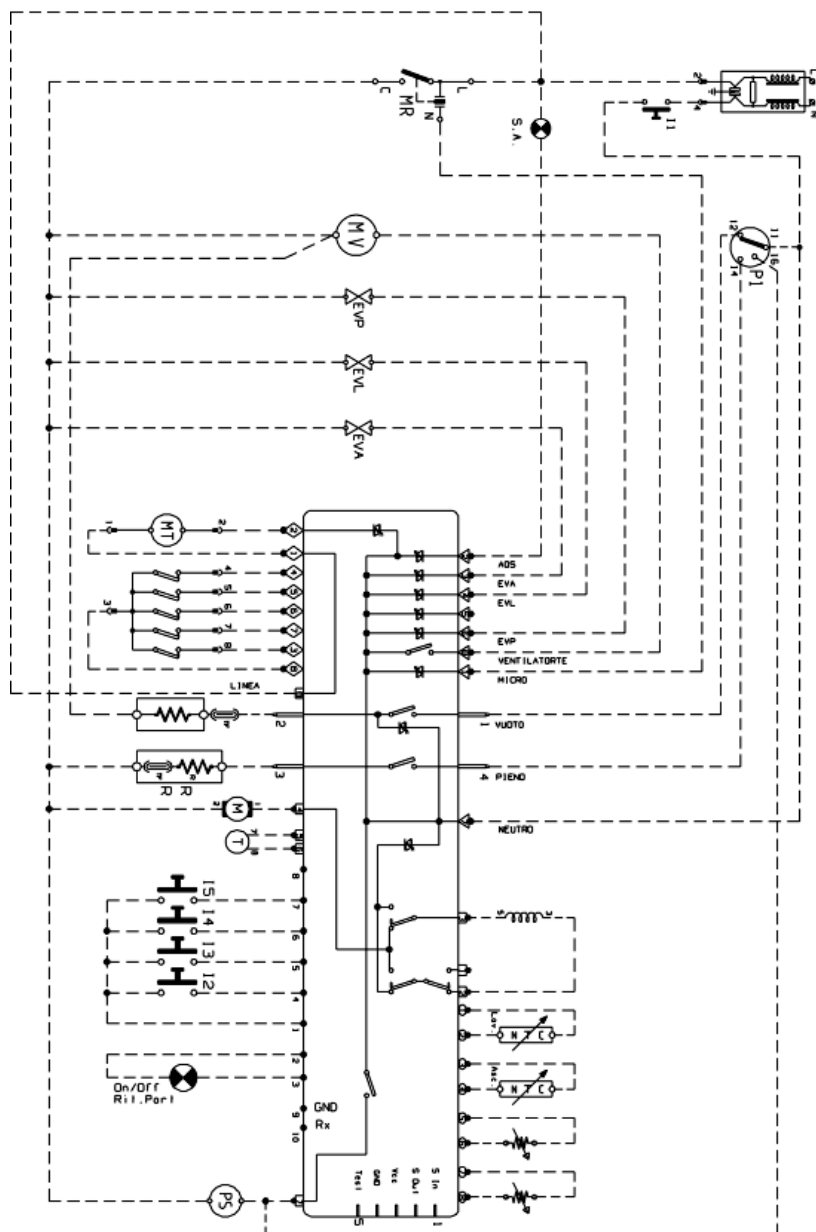
B	Buzzer	N	Neutral or Terminal Board
BF	Terminal board contact, motor fan and dryer	NC	Spin cycle exclusion
BP	Buzzer	P	Pressure switch
C	Condensator	P1	1st level pressure cut-off switch
CA	Condensator	P2	2nd level pressure cut-off switch
DV	Switching device	PA	High speed potentiometer
EF/CL	Electro-Valve Cold Water / Bleach	PB	Low speed potentiometer
EF/L	Electro-Valve Cold Water / Wash	PL	Pure Wool
EF/P	Electro-Valve Cold Water / Prewash	PM	Motor Thermoprotector
ER	Exclude Heating Element	PR	Timer programmer
ET	Thermostat disactivation	PS	Drain pump
EV	Electrovalve	R	Heating element
EVA	Dryer electrovalve	RE	Relay
EVC	Hot water electrovalve	RR	Heating element
EVF	Elettrovalvola acqua fredda	RV	Speed regulator
EVL	Wash electrovalve	Ras/RA	Dryer heating element
EVP	Pre Wash electrovalve	S	LED
FA	Antijamming filter	SL	Line LED
FD	Delicate drying cycle thermostat	SO	Door LED
FE	Strong drying cycle thermostat	SR	Heating LED
FRT	Thermofusible Heating Element	ST	Temperature selector
I	Inverter	SV	Speed Selector for Spin
II...2...3..	Switches/switching devices	T	Timer contacts
IA	Switch On/Off	TA	Drying timer contacts
IC	Switch N.C. - 1/2 Load	TB	Low Temperature Thermostat
ID	Switch display	TC	Spider wheel earth
IE	Water Saving Device	TFL	Flange earth
IF	Switch - Spin Reduction	TG	Main earth
IP	Door switch	TH	Thermostat
IR	Line switch	TH1	1st temperature thermostat
IS	Water-stop	TH2	2nd temperature thermostat
L	Line or Lamp	TH3	3rd temperature thermostat
LB	Low Level	THF	Operating thermostat

LN	Normal Level	THR	Adjustable thermostat
LS	Pilot lamp	TM	Motor earth
M	Earth-symbol	TMB	Main cabinet earth
MC	Spin cycle motor	TMP	Motor thermal protector
MI	MOTOR WITH PULLEY	TMS	Thermostop
ML	Wash cycle motor	TP	Thermal protector
MO	Terminal Board	TPS	Drain pump earth
MP	Door dip-switch	TR	Heating element earth
MR	Thermal Lock	TS	Safety thermostat
MT	Timer motor	TT	Timer earthing connection
MV	Motor fan	TTH	Earthing Thermostat
MV -Ras	Dryer heating element	TV	Tank earth
Mzbn/MTA	zbn timer motor	ZBN	Timer

Electric schemes and links

Cod. se099700

SE099700



## Legend

Legend: se099700

B	Buzzer	N	Neutral or Terminal Board
BF	Terminal board contact, motor fan and dryer	NC	Spin cycle exclusion
BP	Buzzer	P	Pressure switch
C	Condensator	P1	1st level pressure cut-off switch
CA	Condensator	P2	2nd level pressure cut-off switch
DV	Switching device	PA	High speed potentiometer
EF/CL	Electro-Valve Cold Water / Bleach	PB	Low speed potentiometer
EF/L	Electro-Valve Cold Water / Wash	PL	Pure Wool
EF/P	Electro-Valve Cold Water / Prewash	PM	Motor Thermoprotector
ER	Exclude Heating Element	PR	Timer programmer
ET	Thermostat disactivation	PS	Drain pump
EV	Electrovalve	R	Heating element
EVA	Dryer electrovalve	RE	Relay
EVC	Hot water electrovalve	RR	Heating element
EVF	Elettrovalvola acqua fredda	RV	Speed regulator
EVL	Wash electrovalve	Ras/RA	Dryer heating element
EVP	Pre Wash electrovalve	S	LED
FA	Antijamming filter	SL	Line LED
FD	Delicate drying cycle thermostat	SO	Door LED
FE	Strong drying cycle thermostat	SR	Heating LED
FRT	Thermofusible Heating Element	ST	Temperature selector
I	Inverter	SV	Speed Selector for Spin
II...2...3..	Switches/switching devices	T	Timer contacts
IA	Switch On/Off	TA	Drying timer contacts
IC	Switch N.C. - 1/2 Load	TB	Low Temperature Thermostat
ID	Switch display	TC	Spider wheel earth
IE	Water Saving Device	TFL	Flange earth
IF	Switch - Spin Reduction	TG	Main earth
IP	Door switch	TH	Thermostat
IR	Line switch	TH1	1st temperature thermostat
IS	Water-stop	TH2	2nd temperature thermostat
L	Line or Lamp	TH3	3rd temperature thermostat
LB	Low Level	THF	Operating thermostat

LN	Normal Level	THR	Adjustable thermostat
LS	Pilot lamp	TM	Motor earth
M	Earth-symbol	TMB	Main cabinet earth
MC	Spin cycle motor	TMP	Motor thermal protector
MI	MOTOR WITH PULLEY	TMS	Thermostop
ML	Wash cycle motor	TP	Thermal protector
MO	Terminal Board	TPS	Drain pump earth
MP	Door dip-switch	TR	Heating element earth
MR	Thermal Lock	TS	Safety thermostat
MT	Timer motor	TT	Timer earthing connection
MV	Motor fan	TTH	Earthing Thermostat
MV -Ras	Dryer heating element	TV	Tank earth
Mzbn/MTA	zbn timer motor	ZBN	Timer