

Model type:  
**AB95AUS**

Commercial code:  
**F023879**

## General notes

### Technical Documentation guidelines

---

---

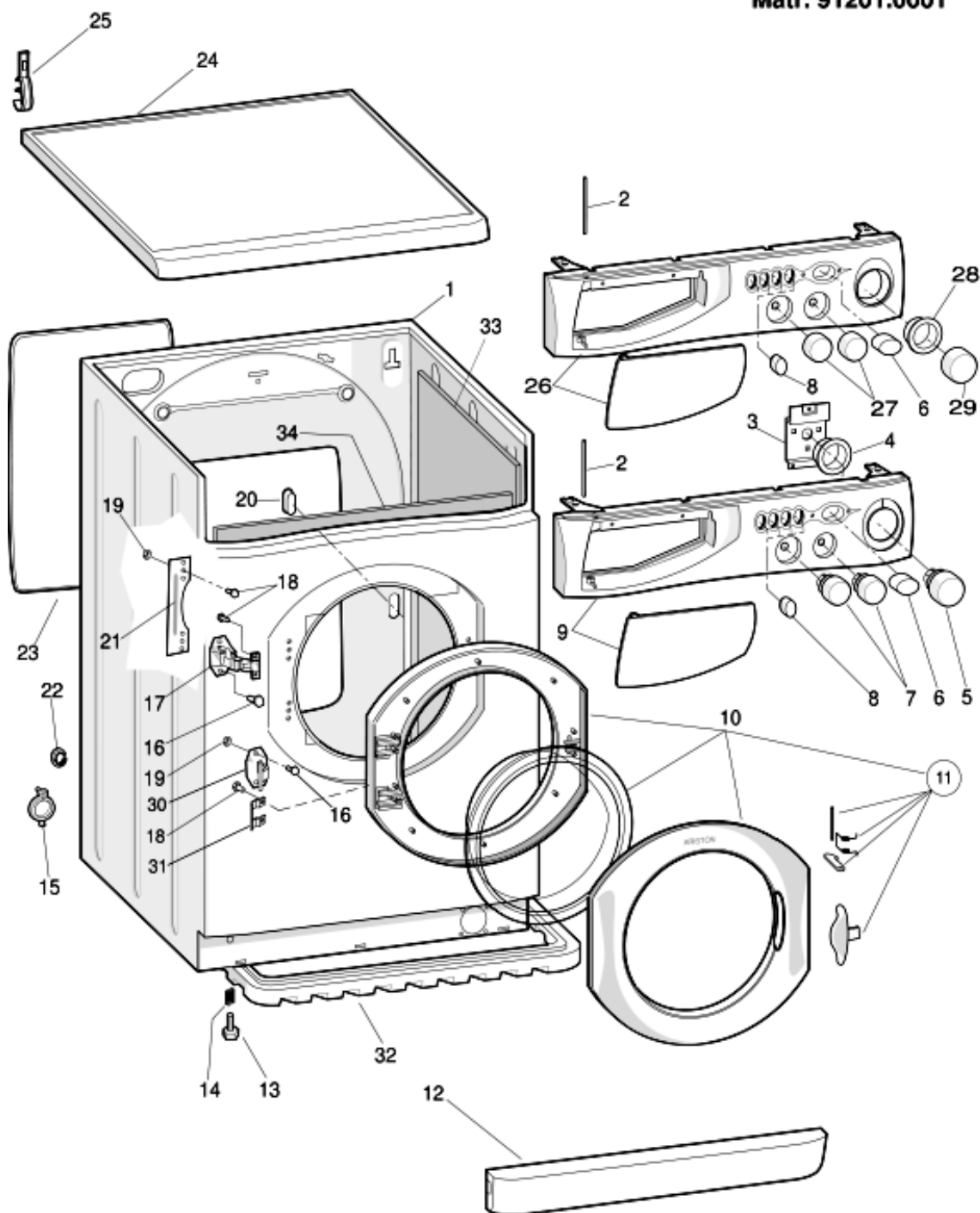
You can find herewith some generic information to simplify consulting of technical documentation:

1. Models of same range share the same exploded views, which report the richest set of spare parts: generally, a model does not necessarily have a related spare part for each particular shown on exploded views.
2. Some spare parts can not be represented directly on the exploded views (instruction booklets, specific kit, etc...). You can find those codes in the spare parts list with the same reference of particular where spares are installed or with references 099, 999. Instruction booklets, once managed, appear with 000 reference.
3. On the higher right site of each exploded view there is a serial number which indicates the beginning of the production of certain range: some models might have more than an exploded view for a given category, each distinguished by a different serial no. and linked to another spare parts list, In this case, serial no. is required to supply the right spare part code. Exploded view to be considered is the one with a more recent serial no. but previous than the one of the model that needs assistance.
4. Exploded views might require further updates even after publishing. Addition of new spares will go on following the already existing numeration references. Revision number of an exploded view is shown into last four digits of serial number into upper right hand corner.
5. The spare parts list associated to an exploded view shows related codes of spares managed for a certain model; for each spare part other informations are available:  
  
REF: reference no of spare into a table; SUBSTITUTE: list of spare(s) which can replace a code but that keeps same functional characteristics  
  
INDUSTRIAL CODE: list of variables of a model (shown into model label) where such spare is used; NOTICE: code of information(s) to refer to complete technical intervention, track for changes or to find correct spare part code.
6. Some notices, into a same section are generic therefore cannot be directly linked to a spare part. In order to assist a model in the best way as possible, it is helpful to pay attention to all notices and constantly verify documentation updates
7. Technical documentation cover shows model name and its commercial codes

1140120

Exploded views

Matr. 91201.0001



1140120

1140120

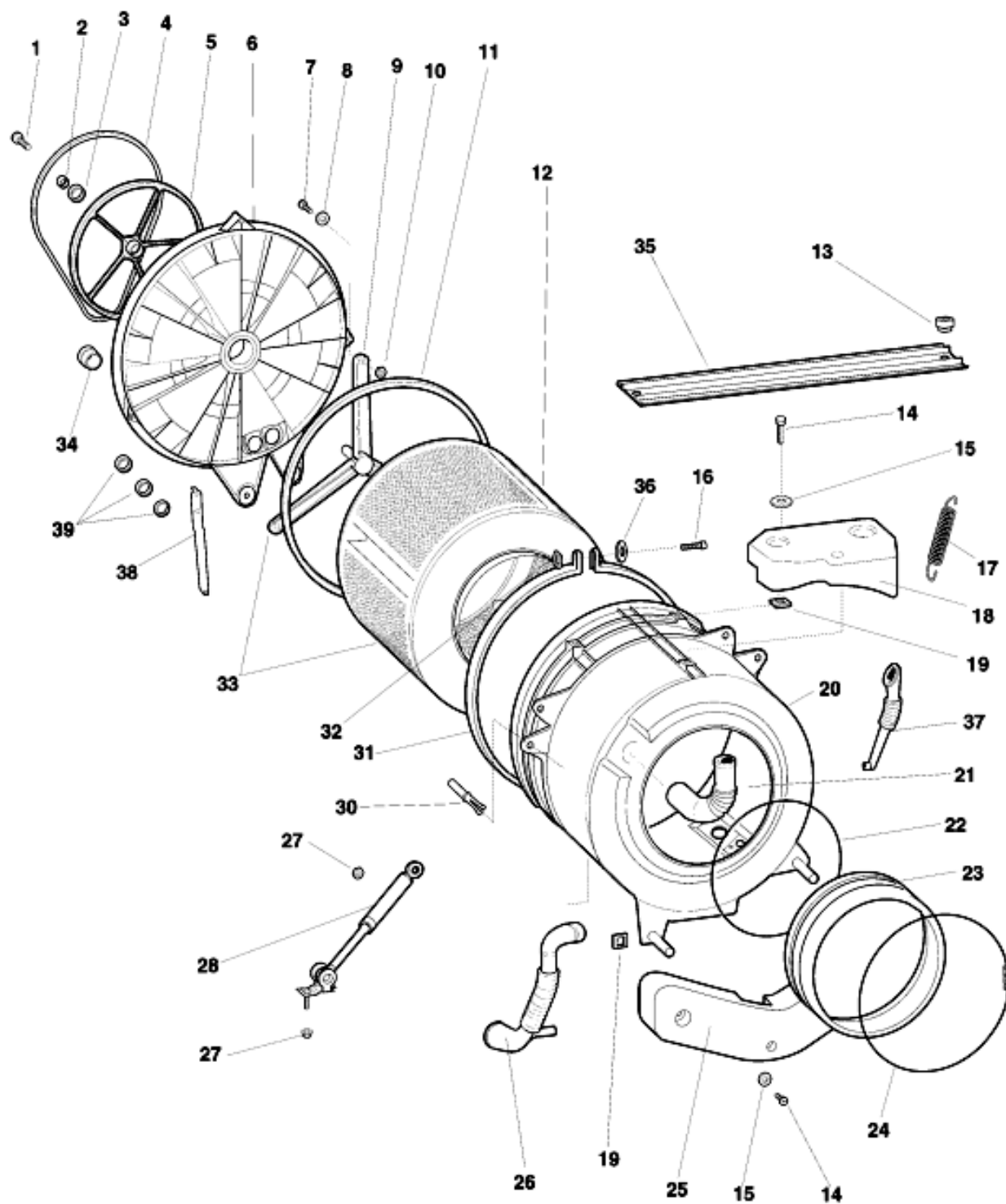
Spare parts list

Ref.	Code	From	To S/N	Substitute	Description	Notice	Industrial
000	C00080517				user instructions booklet gb		
000	C00119282				kit package bolt		
001	C00065974			1 x C00090584	cabinet white 27	n1040208 n1040276	
001	C00090584				cabinet white 27		
002	C00065186			1 x C00091882	pivot pin - drawer front 108.5x5		
006	C00064509			1 x C00117965	pushbutton white 0/i		
008	C00064507				pushbutton white		
010	C00065997				door frame assy		
011	C00065250			1 x C00116580	door handle kit		
012	C00065961			1 x C00115934	plinth white 27		
013	C00050320			1 x C00084810 1 x C00110512	foot - rear m 8 h = 41 mm		
014	C00059869				spring for foot d =11 mm h = 21		
015	C00064755				drain hose collar		
017	C00074131				hinge plate outer case		
018	C00012687				self-tapping screw hi-lo 3,5x13		
018	C00043019			1 x C00074149	taptite screw m4x6testfr		
020	C00064899				blanking plate-rear(test plug)	n1040208	
020	C00084817				blanking plate-rear(test plug)		
022	C00044085				plug cabinet		
023	C00046924				rear cover white		
024	C00065965				worktop white		
026	C00080515				dashboard + handle		
027	C00066079				temperatur knob		
028	C00074565				knob timer disc		
029	C00065964				timer knob white		
031	C00065988				hinge plate door		
099	C00044115				spacer l = 34 mm		
099	C00056932				bolt		
099	C00058925				spacer		
099	C00065878				bracket		
099	C00065879				bolt		
099	C00076402				panel paraspray		

1140220 ( ... - 31006...)

Exploded views

Matr. 91201.0001



1140220

1140220 ( ... - 31006...)

Spare parts

list

Ref.	Code	From	To S/N	Substitute	Description	Notice	Industrial
001	C00034335				bolt - drum pulley fixing m10	n1040259	
001	C00038358				bolt m8x16 (dry loc)	n1040259	
002	C00034337				washer 10,5 x 21	n1040259	
002	C00058039				washer 10,5 x 25 x 3	n1040259	
002	C00091295				washer pulley 9x24x2		
004	C00056948				belt (h7 1221 mm )		
005	C00055043				drum pulley d= 280 mm	n1040259	
006	C00056442			1 x C00056949	tank lid cover plastic	n1040193	
006	C00081781			1 x C00038358 1 x C00089642	tank lid cover plastic	n1040259	
006	C00089642				tank lid cover plastic 800-1000	n1040297	
009	C00038453			1 x C00034335 1 x C00038358 1 x C00089734	bearing spider - on drum	n1040259	
009	C00089734				bearing spider 800-1000 rpm		
011	C00040897				tank cover lid seal - plastic tank		
012	C00036059			1 x C00089735	stainless drum		
013	C00047133				spring support top white 1 per pick		
014	C00014342				bolt m8x75 te	n1040184 n1040235	
014	C00055019				bolt m8x60 te	n1040279	
014	C00081630				self-tapping screw l 60 / 56 mm x	n1040235	
014	C00092016				screw + washer m8 x 63		
015	C00034336				washer d33xd9xsp2	n1040184 n1040235 n1040279	
015	C00055018				washer m8	n1040184 n1040235 n1040279	
016	C00058677			1 x C00014855 1 x C00104428	bolt m8x8,8x90		
017	C00055017				tank spring		
018	C00066615				upper counterweight	n1040279	
019	C00055038				plate	n1040235 n1040279	

1140220 ( ... - 31006...)

Spare parts

list

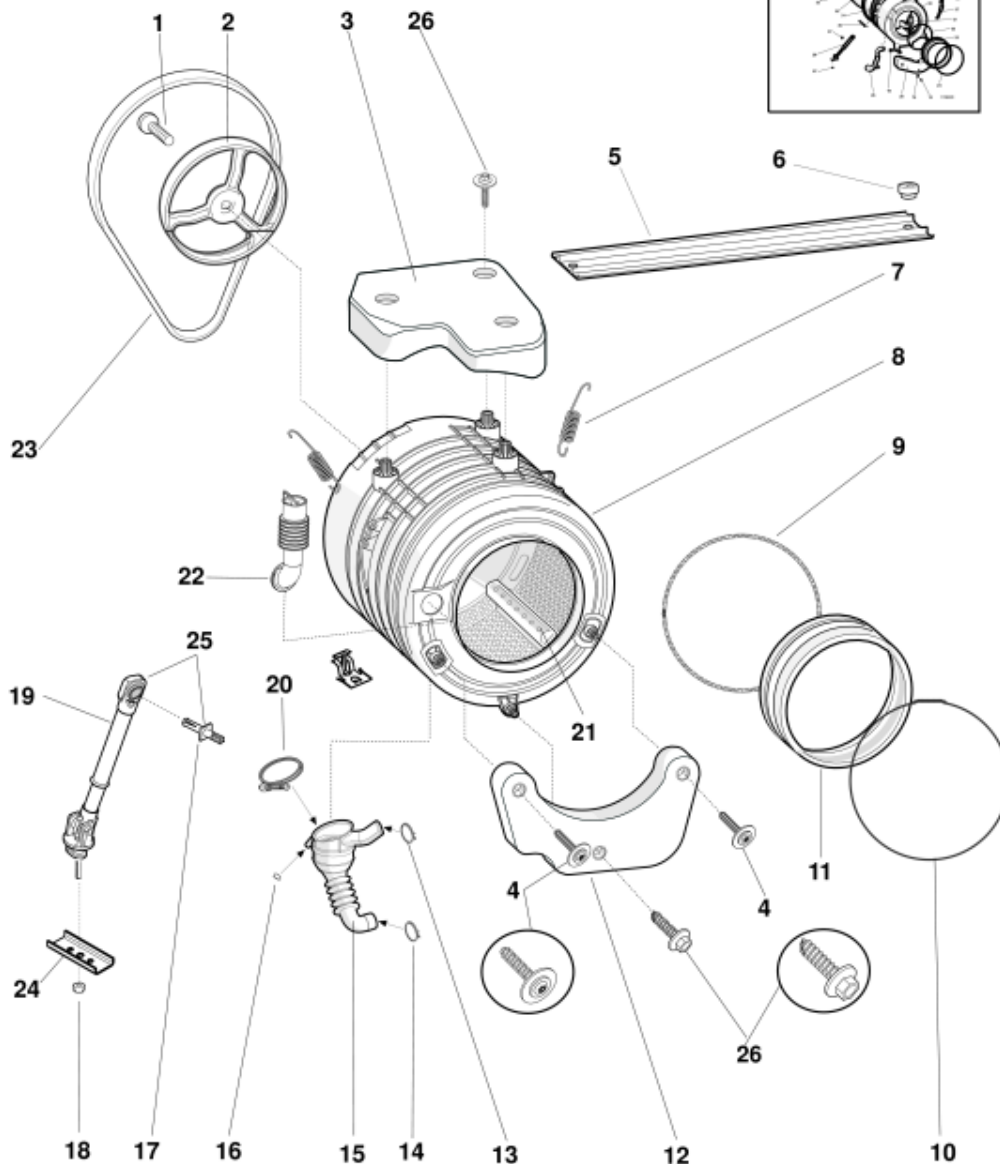
Ref.	Code	From	To S/N	Substitute	Description	Notice	Industrial
020	C00066530			1 x C00066421	plastic tank kit		
020	C00081216				bush diameter 10 mm kit	n1040179	
021	C00066183				hose dispenser to tank		
022	C00041843				washer 8,5x17x1,5		
022	C00057933				bellows clamp (tank front)		
023	C00057932				door seal (hl)		
024	C00064546				clamping ring - door seal front		
025	C00054768			1 x C00081633	front counterweight 9,8 kg.	n1040184 n1040235	
025	C00081633				front counterweight 9,8 kg.	n1040235	
026	C00054777				hose-tank to pump		
027	C00065152				nut romob m6x22x1,5		
028	C00055039				shock absorber 120 n		
030	C00055037				plastic expansion rivet		
031	C00042410				clamping band tank cover lid		
032	C00040935				lock nut m8		
033	C00038450			1 x C00089735	drum + spider assembly 600-800-	n1040259	
033	C00089735				drum + spider ass 600-800-1000		
034	C00014917				grommet - thermostat		
035	C00055397				tank cradle channel top		
036	C00058676			1 x C00041843	washer 8,4x14x1,6		
037	C00056455				hose-deter.recovery tank/pump		
038	C00066597				earth plate	n1040297	
039	C00066691			1 x C00090555	bearing kit	n1040259	
039	C00090555				bearing kit		
099	C00001109				loctite 270 10 gr.		
099	C00033026			1 x C00292523	amblijgon grease ta 100 gr.		
099	C00057566				bolt hi-lo 4 x10		
099	C00092348				self-scraping screw 3,5x8		

1140240 ( 31007...- ... )

Exploded views

Matr. 30716.0003  
EVIZZAZIONE - EVOII

NO: S/N < 30801.0001 (WIEW 1140220 or 1180220)  
NO: S/N > 30801.0001 NO EVOII TUB (WIEW 1140220 or 1180220) →  
OK: S/N > 30801.0001 EVOII TUB



1140240

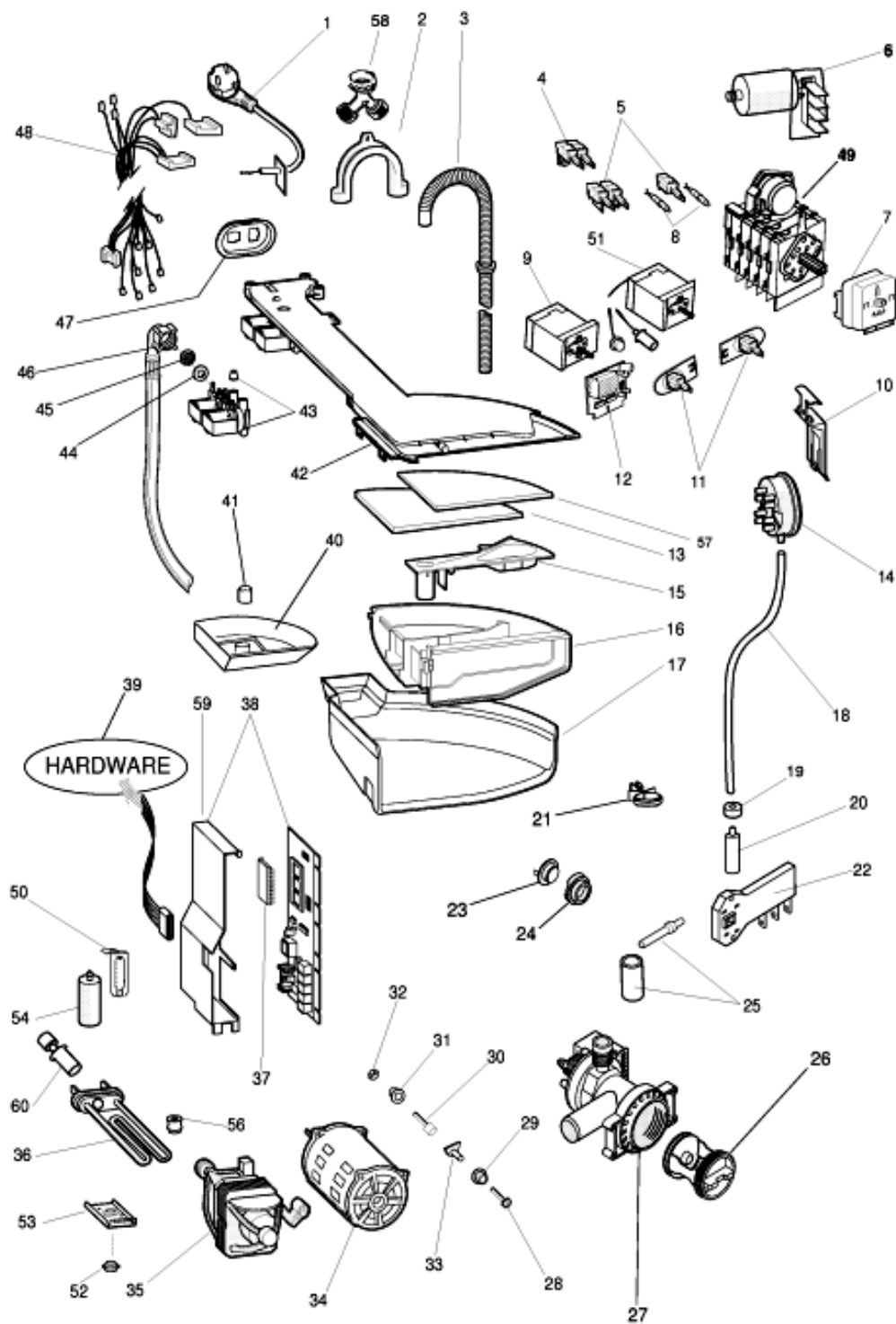
1140240 ( 31007...- ... )  
list

Spare parts

Ref.	Code	From	To S/N	Substitute	Description	Notice	Industrial
001	C00064786			1 x C00143260	bolt m8x23 torx tefl		
002	C00097268				drum pulley d=280 mm h=15 mm		
003	C00094710				top ballance weight 15kg		
004	C00118612			1 x C00194611	screw locking counterweight/tub		
005	C00055397				tank cradle channel top		
006	C00047133				spring support top white 1 per pick		
007	C00096195				suspension spring		
008	C00097236				tank plastic 40l+pul d280		
009	C00092155				door seal- rear retainer		
010	C00064546				clamping ring - door seal front		
011	C00093345				door seal (hl)	n1040282	
012	C00094711				front ballance weight 9,4kg		
013	C00008612				tube clamp 34,6-36,4		
014	C00092411			1 x C00094908	hose clamp		
015	C00092174				hose tank to filter with oko ball		
016	C00092412				hose clamp		
017	C00055037				plastic expansion rivet	n1040372	
017	C00118593			1 x C00280757	plastic expansion peg		46238790001 46238790030
018	C00065152				nut romob m6x22x1,5		
019	C00097259			1 x C00140744	shock absorber 100 n	n1040372	
020	C00094908				hose clamp		
021	C00097565				lifter		
022	C00066183				hose dispenser to tank		
023	C00082318				belt hutchinson 8phe 1195		
024	C00110233				cabinet plate		
025	C00140744			1 x C00309597	shock absorber 100 n kit		46238790001 46238790030
026	C00094741			1 x C00118612	screw locking counterweight/tub		
099	C00001109				loctite 270 10 gr.		
099	C00033026			1 x C00292523	ambljgon grease ta 100 gr.		

1140310

Exploded views



1140310

1140310

Spare parts list

Ref.	Code	From	To S/N	Substitute	Description	Notice	Industrial
001	C00066283				supply cable (00115) l=2550mm	n1040239 n1040276	
001	C00088210				supply cable l=2550mm australia		
001	C00091636				supply cable l=2550mm australia		
002	C00019902				plastic -u- to make drain hose		
003	C00027466				drain hose - to sink l=1860mm		
005	C00058465				on-off switch (double pole)		
005	C00063971				on-off switch	n1040212	
005	C00075445				push button switch na	n1040229	
005	C00080662				push button switch on-off spade		
006	C00064559				radio interference suppressor		
007	C00064555				programme select switch	n1040229	
007	C00083916				programme selector (idc elbi) (hl)		
008	C00057635				red pilot lamp 230v ariston	n1040229	
008	C00074501				pilot light red 12 v led ariston	n1040229	
008	C00086663				pilot light red 12 v rast 2.5		
008	C00089025				pilot light red 230v ra2,5		
010	C00050186				bracket - pressure switch		
011	C00057242				potentiometer 8 pos.		
011	C00085195			1 x C00143096	potentiometer 8 pos. idc rast 2,5		
014	C00066608				pressure switch 1 level		
014	C00085193				pressure switch 1 level idc	n1040305	
014	C00096880				pressure switch (hl)		46238790030
015	C00046154				additive cover		
016	C00046148		10314...	1 x C00281253	soap dispenser drawer (rotary)		
016	C00281253	10315...			soap dispenser drawer (rotary)		
017	C00064529				dispenser body (hl)		
018	C00034325			1 x C00103833 1 x C00103834	pressure switch hose l 560 mm	n1040305	
018	C00094746				pipe pressostat l=505		46238790030
019	C00019755				anti-vibration bush (foam)		
020	C00092173				air trap x oko		46238790030
020	C00103883				air trap cap one way 117 mm	n1040305	
022	C00066291			1 x C00059539	door interlock	n1040229	
022	C00085194				door interlock		

1140310

Spare parts list

Ref.	Code	From	To S/N	Substitute	Description	Notice	Industrial
023	C00053573				temperature sensor (hl)	n1040193 n1040229	
024	C00014917				grommet - thermostat		
026	C00045023				filter handle		
026	C00045025				filter seal		
026	C00045027				pump filter kit		
027	C00050334			1 x C00085617	self cleaning pump 240v./50hz.	n1040223	
027	C00085617				self cleaning drain pump	n1040305	
027	C00085618			1 x C00119307	self cleaning pump 240v./50hz.idc		46238790030
028	C00052497			1 x C00082723	bolt m6x30	n1040305	
028	C00094744				screw locking motor/tub		46238790030
029	C00104675				motor rubber bush		
030	C00040931				bush - motor pivot (plastic)		
032	C00040932				self locking nut m6		
033	C00050187				fixing nut		
035	C00043430			1 x C00097257	tacho generator black for ice		
035	C00047317			1 x C00196539	brush for motor		
035	C00056962				motor ice 850/1000 rpm (hl)	n1040258	
036	C00074581				heating element+termal cut-out	n1040193	
036	C00081780			1 x C00086357	heating element+termal cut-out	n1040229	
036	C00082462			1 x C00081780	heating element+termal cut-out	n1040232	
036	C00086357				heat element+t cut-out	n1040305	
036	C00094715				heating element 1700w		46238790030
037	C00080516				eprom evoi ab95aus sw		
038	C00080981			1 x C00093350	module (less eeprom) sw 1.32	n1040229	
038	C00084838			1 x C00093157	universal module (less eeprom)		
039	C00066055			1 x C00077454	housing seriale		
039	C00066292				insulated tweezers		
039	C00084943			1 x C00099862	serial cable lb2000 - pc	n1040211 n1040317	
042	C00074584				dispenser top	n1040305	
042	C00097340			2 x C00064534 1 x C00110333 1 x C00116098	hopper cover 1e 2u rast2,5		46238790030
043	C00064534				seal - dispenser to valve		

1140310

Spare parts list

Ref.	Code	From	To S/N	Substitute	Description	Notice	Industrial
043	C00064535			1 x C00066518	2-way electrovalve		
043	C00066518				solenoid valve 2 way		
043	C00074585				electrovalve 1 way 5,5 lt (hot)	n1040305	
043	C00110333				fill valve 2 way (7lt rst 2.5)		46238790030
044	C00005572				sealing washer-mains inlet hose		
046	C00003070				mains inlet hose cold 25c 10bar		
046	C00009415			1 x C00144176	mains inlet hose hot 1500mm		
048	C00074582				wiring	n1040229	
048	C00089135			1 x C00090516	wiring idc	n1040276	
053	C00055036				protection oven botton heating	n1040279	
056	C00058523				pillar retainer-heating element		
059	C00075941				bracket for module		
059	C00086717				bracket for module		
059	C00086718				support cover		
060	C00081653				complete probe heating element	n1040229	
060	C00083915				thermistor ntc		
062	C00092412				hose clamp		
063	C00008612				tube clamp 34,6-36,4		

## Notices

### n1040061: Trouble-shooting.

---

#### Intervention procedure on 2000 washing machines

##### 1. Reading the error code

The fault on the appliance is signalled via:

1. the continuous rotation of the selector knob
2. the action, for the first 4', of the electrovalve and the drain pump
3. the door becomes unlocked
4. the led flashes:

the number of flashes indicates the fault code; the code should be read as follows:

- each fast flash (2/3 flashes of the led very close together) represents one code value
- the fault code is evaluated by counting the number of flashes occurring at 3/4" intervals from one another
- stop counting when the washing machine waits the equivalent of approximately 8/9" between flashes
- the procedure is repeated by the appliance cyclically

E.g.: F03

(FIGURE NT 00)

##### 2. Autotest

Should the washing machine not be signalling an error, you can check it using a serial key and using a particular autotest cycle, which is to be activated as follows:

1. bring the washing machine to reset position (coloured ball) for at least 5" and wait until the led flashes on reset mode
2. insert the hardware key into the serial outlet
3. position the switch situated on the key in TEST position
4. wait for the door to lock and for the selector to start turning
5. position the switch situated on the key in PC position

the appliance will carry out the following cycle:

- selector moves on up to position 0 (12h if the appliance has a delay, programme 1 if it has no delay)
- loads the wash electrovalve for approx. 10"
- loads the pre-wash electrovalve for approx. 10"
- loads the wash electrovalve and pre-wash electrovalve at the same time until the pressure switch is on full
- heats up to 30° and moves the motor in both directions
- selector moves on for 9 notches
- drains and spins
- the selector knob stops on one of the reset positions
- STOP

The test cycle can be repeated as many times as you wish following the same procedures  
The test cycle can be interrupted by positioning the selector knob on one of the reset positions.

### 3. Intervention in the event of a Fault

In the event of a fault, the procedure to go by is as follows:

F01: Triac Short circuit

Overhaul CNE

Replace Card

F02: Blocked Motor, Short-circuited/Open Tachometry

Overhaul CNE

Overhaul Motor connector

Control CNE Continuity/Motor Connector

Control Motor Windings

Control Tachometry Windings

Replace Card

F03: Open/Short-Circuited NTC Found

Overhaul CNA

Control NTC Wiring

Control CNA/NTC Wiring Continuity

Replace NTC

Replace Card

F04: Overflow and Pressure Switch Empty found at the same time (Pressure Switch stuck on Empty)

Overhaul CN1

Overhaul Pressure Switch Contacts

Control CN1/Pressure Switch Continuity

Replace Pressure Switch

Replace Card

F05: Blocked Pump or Pressure Switch stuck on Empty Found

Overhaul CNF (pump connector)

Overhaul Pump Connector

Control Pump Filter

Control Pump Windings

Change Pump

Replace Card

F06: Selector Error (a part no. cannot be found)

Overhaul CND (selector connector)

Overhaul Selector Connector

Control Selector/CND Continuity

Control Selector Motor

Replace Selector

Replace Card

F07: Resistance Relay Stuck

Overhaul CN1

Overhaul CN1

Overhaul Resistance Connection

Replace Card

Overhaul Resistance Connection  
Replace Card

F08: Resistance Missing or Pressure Switch stuck on Full Found  
Overhaul CN1  
Overhaul Resistance Connection  
Overhaul Pressure Switch Connection  
Replace Resistance  
Replace Pressure Switch  
Replace Card

F09: Machine Setup Error Found  
Control Microprocessor Version  
Ask for EEPROM Spare Part indicating Microprocessor version

F10: Pressure Switch Empty and Full or neither Empty nor Full Pressure Switch Found  
Overhaul CN1  
Overhaul Pressure Switch Wiring  
Control CN1/Pressure Switch Continuity  
Replace Pressure Switch  
Replace Card

F11: Pump Feedback Missing  
Overhaul CN1  
Overhaul CNF  
Overhaul Pump Connector  
Overhaul Pressure Switch Connector  
Control Pump Windings  
Replace Pump  
Replace Card

F12 SPECIFIC FOR LVB2000 INDESIT EVOLUTION / DIALOGIC.

F12: Lack of Display card-Main Card Communication  
1. Check the effectiveness of contacts on CNC Connector Card  
2. Overhaul 8-way connector on Display card  
3. Check continuity of CNC-CN 8 way connector  
4. Replace Main Card  
5. Replace Display Card

F13: NTC wiring harness disconnected from the dryer system  
1. Check the efficiency of the terminals on the CNA connector board  
2. Check NTC wiring harness  
3. Check the wiring harness continuity of the CNA / NTC connectors  
4. Replace NTC  
5. Replace terminal board

F14: Dryer connector open or not connected  
1. Check the efficiency of the terminals on the CNI connector board  
2. Overhaul CN1  
3. Overhaul connector connection  
4. Replace the board.Merloni Elettrodomestici

F15: Dryer connector is always active  
1. Check the efficiency of the terminals on the CNI connector board  
2. Overhaul connector connection  
3. Overhaul the pressure sensor connection  
4. Replace the connector

5. Replace pressure sensor
6. Replace the board

#### F16: Non-functioning basket block

1. Go over connector card CNC
2. Go over connector basket block
3. Control Continuity of cabling CNC / basket block and basket block supply
4. Replace basket block
5. Replace card

#### N.B.From Fault F01 to fault F11

These are shown by LEDs in stand by/on in LVB2000 machines Ariston/Indesit.

#### From fault F01 to fault F12

These are shown in a display located on the instrument panel of LVB2000 machines Evolution Indesit.

#### From fault F01 to fault F15

Are those that are indicated according to the version via LED stand by/on or display positioned on the Wash Dry machine Ariston/Indesit panel.

#### 4. Replacing the card

Should you have to replace the card:

- retrieve the EEPROM from the old card
- reassemble the EEPROM onto the new replacement card (without EEPROM)

In the event, and only in this case:

- an F02 has been detected
- the above-mentioned checks have been carried out and no problems have been detected on the wiring or to the motor
- the card fitted onto the washing machine is a 12 or 20 version (the version is indicated by a label on the module-containing box with SW20 or SW12)

you should:

- fit on a new card (version 32 or above)
- fit on an updated EEPROM to request from the assistance service centre, stating the code (e.g. 80xxxxx0000 or 46xxxxx0000), the serial number and the washing machine model.

#### n1040066: LB2000 Hardware (Serial hardware key and Pliers)

---

As of 05.04.2000, the following Spare Parts are available from the Warehouse:

Part no.066055 - Serial hardware key for LVB2000 autotest. It has not to be linked to PC. (substituted with 077454);

Part no. 077454 - Serial hardware key for LVB2000-PC White (substituted with 084566);

Part no. 084566 - Serial hardware key for LB2000/EVOI -PC BIANCA (substituted with 095669 LB2000/EVOI, EVOII - PC).

Part no.066292 - Extractor pliers for integrated circuits.

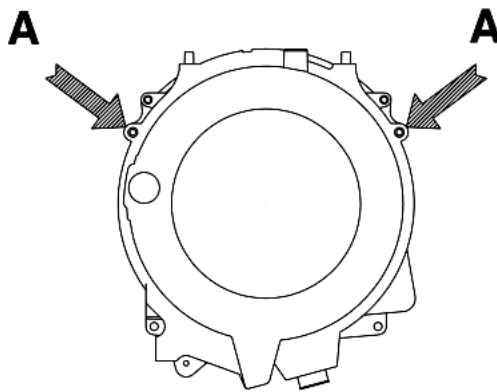
For instructions on use, please refer to the relative Service Manual.

### n1040179: Kit of Small Steel Sleeves for spring eyelets on plastic tubs.

---

If on the apparatus' with plastic tubs with registration number previous to 81001.0001, the wearing of the spring eyelet shows (caused by an anomalous rubbing of the spring on the plastic), a Kit of small steel bushes been realized (Diameter 10 mm X Length 10 mm) Code 081216.

The two small sleeves that are part of the kit have to be inserted in interference to the spring eyelets (see Letter A in following figure)when signs that these have being used are visible. The solution is effective even if the ring is completely cut.



NT004300

### n1040184: Modification of counterweight fixing on front plastic tubs.

---

From the registration no. 10320.0001, the front counterweight fixing system has been modified, on Washing machines with plastic tubs produced in the Teverola factory plant, that now is achieved via the use of three self-tapping screws code 081630. This modification has affected the following items :

Tubs code 066420 and 066530.

The modified tubs retain the same SAT pre-modification code and will be handled until stock depletion and are equipped with the respective fixing screws;

Pre-modified tubs equipped with the following items:

Qty. 3 Screws code 014342;

Qty. 3 Conical washers code 055018;

Qty. 3 Plain washers code 034336.

Modified tubs, equipped with the following items:

Qty. 3 Self-tapping screws code 081630.

Front counterweight.

The modified front counterweight code 081633 may be used in place of the pre-modification counterweight code 054768 but not vice versa, the pre-modification counterweight will continue to be handled until stock depletion.

Each time in a modified tub it is necessary to unscrew the self-tapping screws that stop the front counterweight , effecting again the fixing and avoiding a possible loosening in time of the tub and consequently its break , it has to be used screws code 014342, conical washers code 055018, plain washers code 034336 and plates code 055038.

n1040193: Probe perforation / thermostat from the tub cover has been eliminated.

---

From the registration no. 10401.0001 the Washing machines produced in the Teverola factory Plant, involving the present notification, the perforation for housing the temperature / adjustable thermostat / probe on the plastic tub cover has been eliminated and has been realized directly on the connector.

Common Items involved in this modification are :

Code 081653 - Temperature probe

Code 081780 - Connector with thermo fusible + probe perforation 1700 W 230 V;

Code 082462 - Connector with thermo fusible + probe perforation 1700 W 240V;

Code 081781 - Plastic tub cover without probe perforation;

Cod. 082616 - Thermostat for heating 1T87°C NC;

Code 081939 - Adjustable thermostat;

Code 082601 - Heating element + thermal cut-out 1800W 230V.

The new items are not singularly interchangeable with the pre-modification items that will continue to be handled.

The introduction date of modification specifically for each model, it is visible on the plate of EPROM's description SAT code, which is inserted on the model's documentation Xpartfinder

n1040208: New hardware testing plug LB2000 Teverola.

---

From the registration number 10827.0001 on all washing machines LB2000 with program selector, produced in the factory in Teverola, a new hardware testing plug cod. 084817 is used.

The new plug is not interchangeable with the pre-modified one cod. 064899; so both have to be managed. In case of substitution of the piece of furniture on an equipment, preceding the registration number 10827.0001, it will be necessary to put on the suitable plug.

This modification of the registration number 10820.0001 is extended to all washing machines and wash-driers with a programs' selector produced in the factory in Comunanza.

n1040211: Serial cable to connect the hardware key with the PC.

---

To connect the hardware key: LB2000 with the personal computer, you must use a serial cable, pin to pin 9 pin F/F, to guarantee the availability, it was decided to manage it as a spare part.

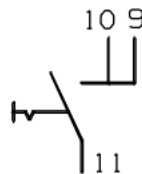
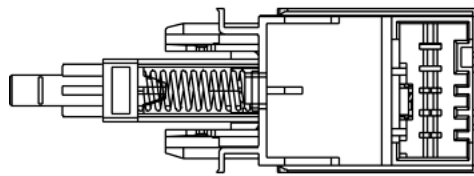
The SAT code of the cable (length 2m) is 084943.

## n1040212: New switch

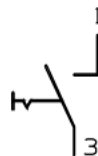
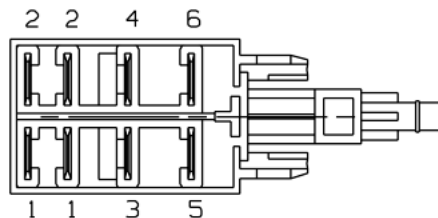
From the registration no. 10507.0001, on all Washing machines produced in the Teverola production and from 10402.0001 on Comunanzaplant a new switch NA code SAT 075445 has been used in place of the switch NA code SAT 063971. The new switch differs to the pre-modification switch, which will continue to be normally handled for the Faston type of connections (see enclosed illustration NT006300).

NT006300

Cod. 075445



Cod. 063971



## n1040223: Discharge pump "RAST5" for Teverola washing machines

From the registration no. 11022.0001, the Teverola produced washing machines involved by the present Notice, will use new discharge pumps code 085618 and 085617 in substitution respectively to the preceding codes: 044998 and 050334. The new pumps may be used in place of the preceding pumps ensuring that the terminals are equipped with faston covers. The pre-modification pumps will be handled regularly until stock depletion.

## n1040229: Items with IDC connectors.

From November 2001, in order to improve electrical connections on models produced in Teverola and Comunanza plants, electrical components supplied with IDC connectors have been applied.

New particulars are:

Code 083916 = PROGRAMME SELECT ELBI 1665 RAST.2 8 POS.  
Code 085195 = POTENTIOMETER 8 POS. IDC;  
Code 083915 = TEMPERATURE SENSOR NTC ELTH;  
Code 087823 = CONDUCTIBILITY CONTROL CARD IDC;  
Code 085194 = DOOR INTERLOCK IDC;  
Code 080662 = PUSH BUTTON SWITCH NA ON OFF;  
Code 088394 = PUSH BUTTON SWITCH S.CM NA IDC;  
Code 086660 = PRESSURE SENSOR 1LEVEL 93 - 68 + ANTI-SPILL;  
Code 088393 = PRESSURE SENSOR 1 LEVEL 90 - 65 + ANTISPILL;  
Code 087187 = PRESSURE SENSOR 1 LEVELS + ANTI-SPILL;  
Code 085193 = PRESSURE SENSOR 1 LEVELS + ANTI-SPILL;  
Code 084763 = RED WARNING LIGHT 12 V INDESIT;  
Code 086663 = RED WARNING LIGHT 12 V RAST2 ARISTON  
Code 087188 = HEATING ELEM.TERMAL CUT-OUT 1700W/230V L= 169,5 mm ;  
Code 086661 = HEATING ELEMENT FOR PROBE 1700W 230V L= 212.5 mm;  
Code 089416 = MODULE (LESS EEPROM) WM-WD > 1200 RPM.IDC ;  
Code 089074 = MODULE (LESS EEPROM) SW 2.22 YELLOW >1200 IDC;  
Code 089404 = MODULE (LESS EEPROM) IDC EW-AR-IN<1200.  
Code 084838 = MODULE (LESS EEPROM) MODULE UNIV. STRIP SW 220 IDC.

Wires with IDC connectors can be found directly on spare parts list of models to be repaired.

This change has not affected EEPROM which remain the same.

To find the right particular to use:

- 1 – Find the modified particular into spare parts list of model of interest
- 2 – Check list of models herebelow given and compare with their serial no.

Models related to Comunanza and Teverola plants in alphabetical order.

Models of Communanza factory. by

A1124UK (23572) Matr. 11209.0001;  
A1234UK (22573) Matr. 11217.0001;  
A1435SUK (23575) Matr.20502.0001;  
A1435UK (23574) Matr.20502.0001;  
A1535UK (28069) Matr.20502.0001;  
A1635UK (27051) Matr.20502.0001;  
AA1000BFR (25700) Matr.11209.0001;  
AAX106LFR (25698) Matr. 20121.0001;  
AAX116LFR (25591) Matr.20121.0001;  
AAX126LFR (25699) Matr. 20121.0001;  
AAX149LFR (26286) Matr.20502.0001;  
AB104XTK (22504) Matr. 11217.0001;  
AB108XEO (26389) Matr.11209.0001;

AB108XIT (22443) Matr. 11203.0001;  
AB63XGR (24894) Matr. 11217.0001;  
AB65XEO (24492) Matr. 11209.0001;  
AB66XIT (26972) Matr. 20121.0001;  
AB84XTK (22504) Matr. 11217.0001;  
AB88DAG (26561) Matr.20527.0001;  
AB88DEX (24898) Matr.20527.0001;  
AB88XEO (26388) Matr. 11217.0001;  
AB88XEX (23861) Matr. 11217.0001;  
AB88XIT (22444) Matr. 11209.0001;  
AC106BFR (25817) Matr.20527.0001;  
AC120LIT (26836) Matr.20527.0001;  
AC128LFR (25818) Matr.20527.0001;  
AC80LIT (26835) Matr.20527.0001;  
AC96BFR (25816) Matr.20527.0001;  
AD1000EX (27764) Matr. 20610.001;  
AD1200IT (26694) Matr. 20610.001;  
AD1200TK (27199) Matr. 20610.001;  
AD1600FR (27157) Matr. 20610.001;  
AD1600IT (26834) Matr. 20610.001;  
AD1600ITPXU (27163) Matr. 20610.001;  
AL107XFR (23684) Matr. 20121.0001;  
AL108DAG (24900) Matr.20527.0001 ;  
AL108DEX (24901) Matr.20527.0001;  
AL108DK60 HZ (24905) Matr.20527.0001  
AL108XBE (23648) Matr. 11203.0001;  
AL108XSTK (22698) Matr.20121.0001;  
AL108XTK (22506) Matr.20121.0001;  
AL109SLFR (22495) Matr.20121.0001;  
AL109XAUS (26024) Matr. 11217.0001;  
AL109XEU (22514) Matr. 11203.0001;  
AL109XEX (24734) Matr. 11203.0001;  
AL109XIT (22360) Matr. 20121.0001;  
AL109XSK (25855) Matr. 11203.0001;  
AL118DTK (24902) Matr.20527.0001;  
AL128DAUS (24904) Matr.20527.0001;  
AL128DEX (24903) Matr.20527.0001;  
AL128DSAUS (25742) Matr.20527.0001;  
AL128XBE (23656) Matr. 20121.0001;  
AL129SLBE (23990) Matr.20121.0001;  
AL129XAUS (23864) Matr. 11217.0001;  
AL129XEU (22515) Matr. 11202.0001;  
AL129XSK (25856) Matr. 11202.0001;  
AL129XTK (22507) Matr.20121.0001;  
AL12SUK (24363) Matr. 11209.0001;  
AL12UK (23576) Matr. 11209.0001;  
AL149XEX (22516) Matr.20502.0001;  
AL149XSK (25857) Matr.20502.0001;  
AL14UK (23577) Matr.20502.0001;  
AL169XAUS (26458) Matr.20502.0001;  
AL169XEU (24897) Matr.20502.0001;  
AL67HCGR (23885) Matr.11210.0001;  
AL68XEX (23863) Matr. 11211.0001;  
AL68XIT (22363) Matr. 11126.0001;  
AL68XPT (22485) Matr. 11217.0001;  
AL68XSPT (22977) Matr. 11217.0001;  
AL88DEX (24899) Matr.20527.0001;

AL88XEU (22512) Matr. 11204.0001;  
AL88XPT (22482) Matr. 20121.0001;  
AL88XSPT (22483) Matr.20121.0001;  
AL89XIT (22362) Matr. 20121.0001;  
AL89XSEX (24735) Matr. 11203.0001;  
AL89XSIT (22445) Matr. 20121.0001;  
AL98XSPT (27630) Matr.20121.0001;  
ALD10UK (26092) Matr.20527.0001;  
ALD12SUK (26094) Matr.20527.0001;  
ALD12UK(26093) Matr.20527.0001;  
ALS104XFR (22501) Matr. 20114.0001;  
ALS109XEO (26392) Matr. 11217.0001;  
ALS109XEU (22520) Matr. 11219.0001;  
ALS109XIT (22470) Matr. 20114.0001;  
ALS129XEU (22521) Matr. 20114.0001;  
ALS68XIT (22473) Matr. 11217.0001;  
ALS88XEO (26391) Matr. 20108.0001;  
ALS88XEU (22519) Matr. 20108.0001;  
ALS89XIT (22472) Matr. 20114.0001;  
ALS89XSIT (22471) Matr. 20114.0001;  
AWD10UK (26095) Matr.20527.0001;  
AWD12SUK (26097) Matr.20527.0001;  
AWD12UK (26096) Matr.20527.0001;  
CDE12X (27226) Matr. 20610.001;  
CDE12XUK (27227) Matr. 20610.001;  
LBE12X (26961) Matr. 20610.001;  
LBE12XUK (27155) Matr. 20610.001;  
LBE6X (26968) Matr. 20610.001;  
LBE8X (26969) Matr. 20722.0001;  
SGE12XUK (27241) Matr. 20610.001;  
W104TXSBE (25827) Matr. 20128.0001;  
W104TXSTK (24746) Matr. 20121.0001;  
W104TXTK (23411) Matr. 20121.000;1  
W105TXEX (234403) Matr. 20128.0001;  
W105XDE (24835) Matr. 20114.0001;  
W106XDE (24836) Matr. 20114.0001;  
W108XIT (24820) Matr. 20128.0001;  
W108XSP (23405) Matr. 20128.0001;  
W1215XSDE (24839) Matr. 20114.0001;  
W123SUK (23413) Matr. 20121.0001;  
W123UK (23369) Matr. 20121.0001;  
W123XNL (23416) Matr. 20121.0001;  
W124XDE (24837) Matr. 20121.0001;  
W124XNL (23418) Matr. 20114.0001;  
W125TXEX (23378) Matr. 20128.0001;  
W125XDE (24838) Matr. 20114.0001;  
W125XSDE (24839) Matr. 20114.0001;  
W125XFR (24435) Matr. 20128.0001;  
W126XDE (24840) Matr. 20114.0001;  
W128XSP (24428) Matr. 20128.0001;  
W133UK (24026) Matr. 20121.0001;  
W133SUK (24518) Matr. 20121.0001;  
W143SUK (27059) Matr.20502.0001;  
W143UK (27530) Matr.20502.0001;  
W143XNL (23170) Matr.20502.0001;  
W144XDE (24841) Matr.20520.0001;  
W144XNL (23419) Matr.20502.0001;

W144XSNL (24743) Matr.20502.0001;  
W145TXEX (23379) Matr.20521.0001;  
W145XDE (24842) Matr.20520.0001;  
W146XDE (23843) Matr.20520.0001;  
W146XSDE (26461) Matr.20520.0001;  
W165TXEX (24796) Matr.20502.0001;  
W165XNL (24764) Matr.20502.0001;  
W166XDE (26464) Matr.20520.0001;  
W682XSIT (24813) Matr. 20114.0001;  
W683XGIT 24812) Matr. 20114.0001;  
W68XIT (24408) Matr. 20114.0001;  
W68XSIT (24409) Matr. 20114.0001;  
W842XSIT (24818) Matr. 20128.0001;  
W843XGIT (24820) Matr. 20128.0001;  
W84TXEX (23401) Matr. 20114.0001;  
W84TXTK (23410) Matr. 20121.0001;  
W84XSP (23409) Matr. 20114.0001;  
W84XSP (24469) Matr. 20114.0001;  
W857XSPT (26661) Matr. 20128.0001;  
W857XSPT (26661) Matr. 20128.0001;  
W88XIT (23395) Matr. 20128.0001;  
WA10XIT (26883) Matr. 20128.0001;  
WA6XIT (26881) Matr. 20114.0001;  
WA8XIT (26882) Matr. 20128.0001;  
WA8XSIT (26919) Matr. 20128.0001;  
WAS6XIT (27052) Matr. 20204.0001;  
WAS8XIT (27053) Matr. 20205.0001;  
WD104TEX (24908) Matr. 20603.001;  
WD105TEX (24909) Matr. 20603.001;  
WD105TEX220-60 (27603) Matr. 20603.001;  
WD106FR (25691) Matr. 20603.001;  
WD10UK (25056) Matr. 20603.001;  
WD118SP (26335) Matr. 20603.001;  
WD11UK (25058) Matr. 20604.001;  
WD125TEX (24910) Matr. 20604.001;  
WD125TSEX (27152) Matr. 20604.001;  
WD12SUK (25538) Matr. 20604.001;  
WD12UK (25057) Matr. 20604.001;  
WD12XUK (27233) Matr. 20610.001;  
WD84EX (24906) Matr. 20603.001;  
WD84TEX (24907) Matr. 20603.001;  
WDE12X (27232) Matr. 20610.001;  
WE105XR (26953) Matr. 20603.0001;  
WE10UK (24459) Matr. 20603.0001;  
WE11UK (24460) Matr. 20603.0001;  
WE125XEX (24789) Matr. 20603.0001;  
WE12SDE (27149) Matr. 20610.001;  
WE12SUK (24462) Matr. 20603.0001;  
WE12SUK (27154) Matr. 20610.001;  
WE12UK (24461) Matr. 20603.0001;  
WE12XNL (24762) Matr. 20603.0001;  
WE13UK (24463) Matr. 20603.0001;  
WE145XEX (24792) Matr. 20610.001;  
WE14DE (27080) Matr. 20610.001;  
WE14SDE (27150) Matr. 20610.001;  
WE14SUK (27153) Matr. 20610.001;  
WE14UK (24464) Matr. 20610.001;

WE14XNL (24763) Matr. 20610.001;  
WE14XSNL(27752) Matr. 20610.001;  
WE16DE (27151) Matr. 20610.001;  
WE16UK (25162) Matr. 20610.001;  
WE16XNL (27765) Matr. 20610.001;  
WE8XR (26952) Matr. 20603.0001;  
WES9XR (26892) Matr. 20603.001;  
WH96TXE (25376) Matr. 20128.0001;  
WS105TXEX (23356) Matr. 20205.0001;  
WS682XSIT (24826) Matr. 20204.0001;  
WS683XGIT (24822) Matr. 20204.0001;  
WS84TXEX (23355) Matr. 20204.0001;  
WS88XIT (23349) Matr. 20205.0001;

Models of Teverola factory.

AB103TK (27113) Matr. 20408.0001  
AB104IT (27913) Matr. 20408.0001;  
AB107PT (27094) Matr. 20408.0001;  
AB63EX (23909) Matr. 20408.0001;  
AB83TK (22503) Matr. 20408.0001;  
AB84IT (27914) Matr. 20408.0001;  
AB84PT (22484) Matr. 20408.0001;  
AB95AUS (23879) Matr. 20408.0001;  
AB95EU (23781) Matr. 20408.0001;  
AL102PFR (27299) Matr. 20408.0001;  
AL109K (23910) Matr. 20408.0001;  
AL10UK (23590) Matr. 20408.0001;  
AL65PT (27093) Matr. 20408.0001;  
LNA855FR (27595) Matr. 20325.0001;  
W103NL (24600) Matr. 20314.0001;  
W103TTK (23337) Matr. 20408.0001;  
W103UK (23334) Matr. 20408.0001;  
W104DE (24834) Matr. 20408.0001;  
W104FR (23340) Matr. 20408.0001;  
W104NL (23386) Matr. 20408.0001;  
W104SP (24415) Matr. 20325.0001;  
W104TBE (25474) Matr. 20408.0001;  
W104TEX (23332) Matr. 20408.0001;  
W105FR (27700) Matr. 20408.0001;  
W113UK (23335) Matr. 20408.0001;  
W63TAUS (25885) Matr. 20408.0001;  
W63TEX (24768) Matr. 20408.0001;  
W73FR (23329) Matr. 20408.0001;  
W83DE (24833) Matr. 20408.0001;  
W83NL (24599) Matr. 20313.0001;  
W83SP (23317) Matr. 20312.0001;  
W83TAUS (25886) Matr. 20408.0001;  
W83TEX (23310) Matr. 20318.0001;  
W83TK (23320) Matr. 20408.0001;  
W83TTK (23321) Matr. 20408.0001;  
W83UK (23302) Matr. 20408.0001;  
W85FR (27699) Matr. 20408.0001;  
W93TEX (23308) Matr. 20408.0001;  
W93UK (23330) Matr. 20408.0001;  
W9521E (25379) Matr. 20408.0001;  
WA10IT (26880) Matr. 20408.0001;  
WA10PT (27641) Matr. 20408.0001;

WA6IT (26878) Matr. 20408.0001;  
WA6PT (27639) Matr. 20408.0001;  
WA8IT (26879) Matr. 20408.0001;  
WA8PT (27640) Matr. 20408.0001;  
WP100EX (27761) Matr. 20408.0001;  
WP67EX (27757) Matr. 20402.0001.

n1040232: Use of the resistance 1700W/230V in place of the 1700W/240V.

---

From the registration no. 11210.0001 the resistance 1700W/230V code SAT 081780 has been used in place of the 1700W/240V code SAT 082462 for all the models involved by the modification.  
The resistance code 082462 will be handled until stock depletion.

n1040235: Restored the fixing of the anterior counterweight with platelets inserted in the tub

---

From the 11105.0001 registration number on the washing machines with plastic tubs produced in the Teverola factory, the fixing of the anterior counterweight is restored with platelets inserted in the tub instead of those realised with self-threading screws, the system described in Notice N1040184.

The tubs maintain the same SAT code and are provided with the following particulars:

N° 3 Screws code cod. 014342;  
N° 3 Conical washer cod. 055018;  
N° 3 Plain washer cod. 034336.

Whenever the necessity may arise on a tub, proceed with diverting the self-threading screws that block the anterior counterweight., as it's compulsory to execute the fixing again avoiding in time a possible loosening and thus the breaking of the tub by utilising the registered screws (cod. 014342), the conical washers (cod. 055018), the plain washers (cod. 034336) and the platelets (cod. 055038).

n1040239: Power cable with Australian plug

---

From the registration number 20201.0001 on models AL109AUS (23878), AB95AUS (823879), W63TAUS (25885) and W83TAUS (25886), the power cable with the specific plug Australia code 088210, substitutes the cable code 066283 with the specific plug Argentina.

## n1040242: Power card with welded eeprom.

---

From serial number 20304.0001, IDC power card with welded eeprom is used to ensure the perfect connection of all parts, in the Comunanza, Teverola and Brembate factories.

To replace the module with welded eeprom, it will be necessary to use the eeprom indicated in the SAT document of the model concerned.

To replace the module on a unit with welded eeprom both the SAT module and the eeprom are required, because the latter cannot be reused.

## n1040254: Sheet enclosed with the product eliminat

---

New power module software with elimination of resetting and relative topper sheet.

From serial number 20218.0001, the power module software has been modified on the models concerning this Note.

The new software allows the user to load a new washing program without having to reset the unit and therefore the previously loaded program. This can be done by simply switching off the unit, turning the selector to the new program and switching the machine on again. The machine consequently directly loads the new program.

The new functions have allowed the sheet enclosed with the product to be eliminated.

AB 103 (TK) - 27113  
AB 107 (PT) - 27094  
AB 63 (EX) - 23909  
AB 83 (TK) - 22503  
AB 84 (PT) - 22484  
AB 95 (AUS) - 23879  
AB 95 (EU) - 23781  
AL 102 (FR) - 27299  
AL 109 (AUS) - 23878  
AL 109 (K) - 23910  
AL 65 (PT) - 27093  
LNA 850 (FR) - 26848  
W 103 (NL) - 24600  
W 103 T (TK) - 23337  
W 104 (DE) - 24834  
W 104 (FR) - 23340  
W 104 (NL) - 23386  
W 104 (SP) - 24415  
W 104 T (BE) - 25474  
W 104 T (EX) - 23332  
W 105 (NL) - 24601  
W 63 T (AUS) - 25885  
W 63 T (EX) - 24768  
W 73 (FR) - 23329  
W 83 (DE) - 24833  
W 83 (NL) - 24599  
W 83 (SP) - 23317  
W 83 (TK) - 23320  
W 83 T (AUS) - 25886  
W 83 T (EX) - 23310  
W 83 T (TK) - 23321  
W 84 (FR) - 23313

W 84 TX (EX) - 26491  
W 857 (PT) - 23407  
W 93 T (EX) - 23308  
W 94 (FR) - 23343  
W 9521 (E) - 25379  
WA 10 (PT) - 27641  
WA 6 (PT) - 27639  
WA 8 (PT) - 27640  
WE 10 (EX) - 27648  
WE 109 (FR) - 27300  
WE 8 (EX) - 27647

#### n1040259: Mechanisms 400-600 and 800-1000 Teverola.

-----  
From serial no. 20620.0001 the washing machine models (400 - 600 - 800 - 1000 rpm) produced in the Teverola factory have a new pulley fixing screw M8 X16 Dry Loc SAT code 038358 and only for the 800 and 1000 rpm models a washer code 091295. These new parts are used in place of screw SAT code 034335 and the washers SAT code 034337 and 058039. This modification has involved the introduction of a new drum spider with M8 thread in place of the 038453 with M10 thread and a new drum assy. eliminating the two washers code 034337 and 058039.  
Also, from serial no. 20730.0001, two new mechanisms, 400-600 rpm and 800-1000 rpm, are being produced.

The codes of the new parts are:

##### Mechanism 400-600

Code 089488 - Drum+spider assy. 400-600 rpm (M8 pulley screw hole);  
Code 089489 - Drum spider M8 400-600 rpm;  
Code 090554 - Bearing kit 400-600 rpm;  
Code 089490 - Tank backplate & bearing assy. 400-600 rpm;  
Code 089616 - Driven pulley 400-600 rpm;

##### Mechanism 800-1000

Code 089735 - Drum+spider assy. 800-1000- (M8 pulley screw hole);  
Code 089734 - Drum spider m8 800-1000 rpm;  
Code 090555 - Bearing kit 800-1000 rpm;  
Code 089642 - Tank backplate & bearing assy. 800-1000;

Some of the new parts can be used in place of the premodification ones but not vice versa. The relevant Sat codes are:

Code 081781 - 400- 600- 800-1000 rpm mechanism tank backplate, improved with a new seal ring 800-1000 rpm, can be used on premodification machines; it will be managed until stocks run out and is replaced by code 089642 - Plastic bowl lid 800-1000.

Code 038453 - Drum spider 400- 600- 800-1000 rpm mechanism, replaced by codes:  
Code 089734 - Drum spider M8 800-1000 rpm  
Code 038358 = Metric screw M8x16 (with loctite)

Code 066691 - Old Type Bearing Kit 400 - 600 - 800 - 1000 rpm, improved with a new seal ring 800-1000 rpm, can be used on all premodification products; it will be managed until stocks run out and is replaced by code 090555 - Bearing kit 800-1000 rpm;

Code 038450 - Drum and spider assy. 400-600-800-1000 rpm is running out and is replaced by code 089735 - Drum and spider

assy. 800-1000 rpm with pulley screw code 038358.

WHEN REPLACING THE BEARINGS ALWAYS USE AMBLJGON GREASE ALREADY MANAGED WITH SAT CODE 033026.

#### n1040263: Red indicator lamps IDC Teverola

---

From serial no. 20710.0001 lamps with IDC attachment have been used on the Ariston and Indesit washing machines produced in the Teverola factory.

Pre-modification codes relevant to the modification are:

Code 057635 - RED INDICATOR LAMP WITH "ARISTON" TUBULAR FASTONS

Code 075456 - RED INDICATOR LAMP WITH "INDESIT" TUBULAR FASTONS

Modified codes:

Code 089025 - RED INDICATOR LAMP 230V RA2.5 ANTILUM-ARISTON;

Code 089024 - RED INDICATOR LAMP 230V RA2.5 ANTILUM-INDESIT.

To use the new lamps on the pre-modification equipment, the procedure described in Note n1040255 must be carried out, bearing in mind that the specific IDC connector code 089026 must be used.

The new wirings supplied with the new lamp can also be used on the pre-modification equipment and are managed with the same SAT code.

The Note is included only in the documentation of models affected by the modification.

#### n1040276: Power supply cable + integrally moulded filter.

---

All appliances produced in the Comunanza (from serial no. 21008.0001), Teverola (from serial no. 21111.0001) and Brembate (from serial no. 21119.0001) factories have been equipped with power supply cables with integrally moulded filter (see fig.1 - 1A and 1B) and new units having a specific opening at the back for fixing the new cables (see fig. 1 - 1C).

The new units, together with the new cables, can be used in place of the premodification ones, by connecting the wiring to the cable, as shown in figure 1 - 1D.

The codes of the new units and of those replaced (ESI - table n1040276fig02), which will be managed until stocks run out, are given below.

The new power supply cables are:

Code 091632 - Power supply cable 3x1 schuko 1.5m+capacitance filter;

Code 091633 - Power supply cable 3x1 schuko 1.5m+inductive filter;

Code 091634 - Power supply cable UK 3x1 l= 1950mm + inductive filter;

Code 091635 - Power supply cable UK 3x1 l=1950mm+capacitance filter;

Code 091636 - Power supply cable l=2.55m AUS+inductive filter;

Code 091641 - Power supply cable l=2550mm AG +capacitance filter;

Code 091642 - Power supply cable 1.85mt SHUKO no inductive filter;  
 Code 091643 - Power supply cable 3x1 (CH) 1.5m+inductive filter;  
 Code 091645 - Power supply cable 3450mm SOUTH AF.+capacitance filter;  
 Code 091690 - Power supply cable shuko 12.55m KOREA+inductive filter;  
 Code 091689 - Power Supply cable l=2550mm AG+inductive filter.

IMPORTANT: the fixing / continuity screw is a specific self-scraping screw (code 092348) that ensures earth continuity between the filter and the unit. The same screw must be refitted in order to guarantee machine conformity.

The premodification wirings, are also managed for modified products by making the connection to the terminal block of the new cable as shown in fig. 1 - 1D.

The wiring diagrams given in the Documentation remain unchanged.

DESCRIZIONE MOBILI	STABILIMENTO	CODICE SAT MOBILE V.T.	CODICE SAT MOBILE N.T.
MOBILE B.27 'AB40-STAB.46'	TEVEROLA	65974	90584
MOBILE BIANCO 'W113(UK)'	TEVEROLA	75417	90583
MOBILE BIANCO 'LVB2000'	COMUNANZA	64500	90582
MOBILE BIANCO 'ALS-ABS LVB2000'	COMUNANZA	74146	90581
MOBILE SILVER 'LVB2000'	COMUNANZA	74184	90580
MOBILE SILVER ALS'LVB2000	COMUNANZA	74629	90579
MOBILE BIANCO W133(UK)	COMUNANZA	75315	90578
MOBILE 'BIANCO AL148FR'	COMUNANZA	76629	90577
MOBILE BIANCO 'WS63XIT'	COMUNANZA	76744	90576
MOBILE SILVER FIAT 647'W68XSIT'	COMUNANZA	77022	90575
MOBILE BIANCO DIALOGIC-2001	COMUNANZA	84310	90574
MOBILE BIANCO LBE8X	COMUNANZA	84808	90573
MOBILE BIANCO27 INDESIT	BREMBATE	84713	91748
MOBILE ARISTON BIANCO27 6KG	BREMBATE	89483	91742
MOBILE BIANCO27 6KG '535'	BREMBATE	83287	91749
MOBILE BIANCO27 5KG	BREMBATE	81696	91752
MOBILE ARISTON BIANCO27 SLIM	BREMBATE	89649	91754
MOBILE INDESIT BIANCO27	BREMBATE	89963	91756
MOBILE BIANCO27 6KG INDESIT	BREMBATE	91036	91758

## n1040279: Heater retaining element bracket and counterweight fixing

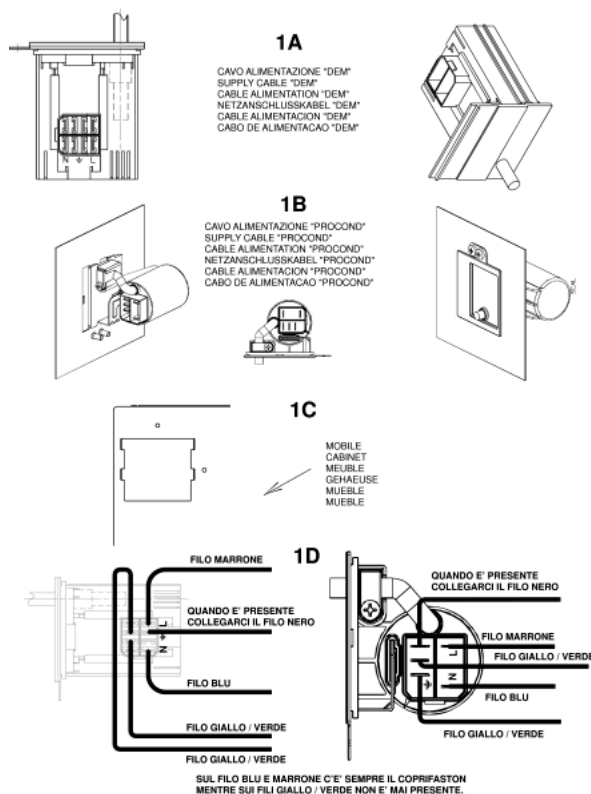
From serial no. 21015.001, a heater retaining element bracket (see fig.3) has replaced the heater retaining element protection Sat code 055036 (see fig.4) on all plastic tanks installed in washing machines produced in the Teverola factory.

The new part (fig. 1A) is fixed to the bowl with a self-tapping screw from the inside outwards and differs from the one used in the Comunanza factory (fig. 1B) in the fixing hole which is not threaded.

In order to reduce the number of parts used, only kit 058523 is managed and which, if used on the Teverola washing machines, must be fixed with a self-tapping screw, instead of metric, after widening the tapped hole with a suitable drill bit.

When inserting the heater retaining element, particular care must be taken so that it is fitted correctly (Fig. 3).

FIG. 1



The plastic tanks to be arranged for the guide have the same Sat code as those with the protection.

>From serial no. 21121.0001, the counterweight Fig. 2B with outlet increased by 5 mm in the centre has replaced the previous counterweight Fig. 2A.

The new counterweight (fig. 5) is fixed using three M8 X 63 mm screws with washer code 092016 (see fig. 8) and three plates with the last thread flattened (fig. 6) to prevent accidental loosening of the screw.

All the plates code 055038 in stock in the Centralised Warehouse have been replaced and can also be used on premodification appliances.

The modified counterweight has the same Sat code as the premodification item (066615) that will be managed until stocks run out.

The new counterweight must be assembled using the new screws and plates (see fig. 7).

Both counterweights can be employed necessarily using the following fixing parts which are specific for each type of counterweight:

Fixing parts for premodification counterweight (see fig. 9):

3 pieces code 055019 - Screw M8 X60 mm;

3 pieces code 055018 - Conical washer;

3 pieces code 034336 - Flat washer;

Fixing items for modified counterweight:

3 pieces code 092016 - Screw M8 X 63 mm with washer;

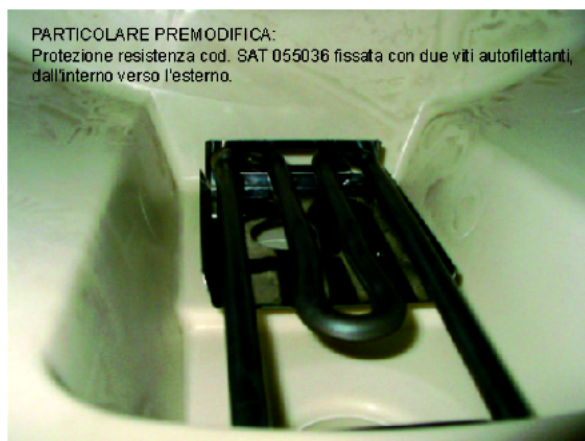
3 pieces code 055038 - Plate with last thread flattened;



**AVVERTENZE:**

Nuova guida resistenza introdotta il 15-10-02.

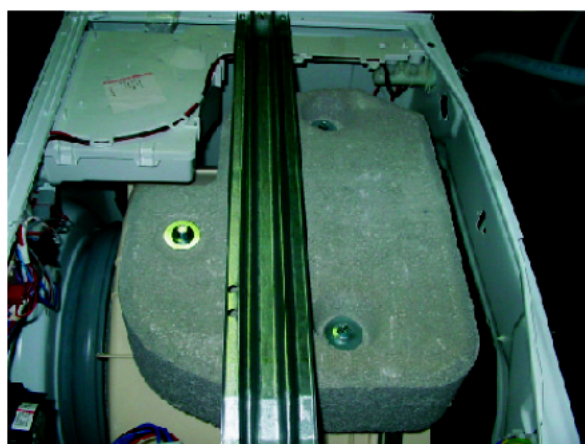
Al momento dell'inserimento della Resistenza, fare attenzione affinché questa venga montata correttamente, così come raffigurato in foto, in quanto esiste la reale possibilità che questa possa essere montata al di sotto dell'anello intermedio della "campanella" e che quindi la resistenza andrebbe a contatto diretto con la plastica.



**PARTICOLARE PREMODIFICA:**

Protezione resistenza cod. SAT 055036 fissata con due viti autofilettanti, dall'interno verso l'esterno.

Insieme nuovo fissaggio del contrappeso.



Particolari per il fissaggio del contrappeso modificato

N° 3 pezzi del cod. 055038 – Piastrina con ultimo filetto schiacciato per evitare l'eventuale allentamento del perno.

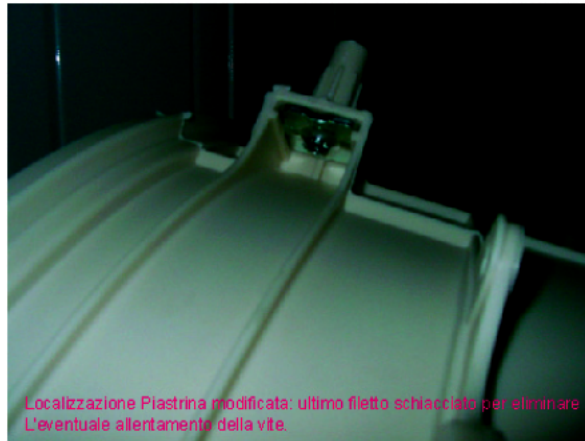


FIG. 1

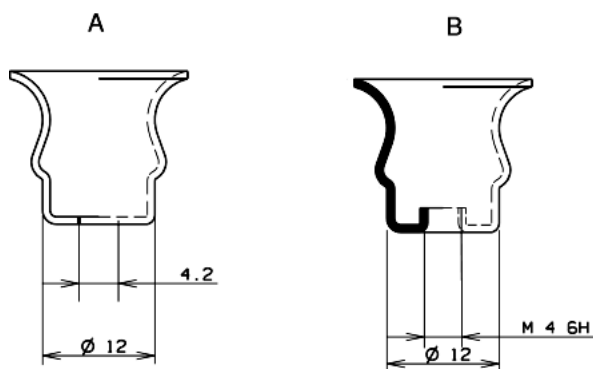
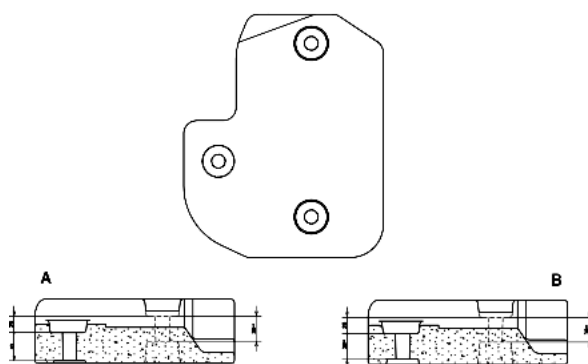


FIG. 2



n1040297: Elimination of earthing plate from the plastic tub lid in the Teverola factory.

---

From serial number 30528.0001, the earthing plate code 066597 has been eliminated from all washing machines with plastic tubs produced in the Teverola factory.

The replacement lids code 089642 and 089490 have no earthing plate, therefore if they are used on premodification appliances the appliance must be earthed using the plate and screws of the replaced part or, if these are unusable, use those managed as replacement parts given below.

Code 057566 - Screw HI-LO 4 X 10;

Code 092348 - Self-tapping screw 3.5 X8 three-lobe

Code 066597 - Earthing plate.

n1040305: Introduction of EVO on LB2000 washing machines produced at Teverola.

---

Since August 2003, the following modifications are gradually being made to the oscillating unit on 2000 range models produced in the Teverola factory:

Gradual use of the EVOII 40 litre plastic bowl (code 097236) which differs to the previous LB2000 version, for the following characteristics:

- 1) Assembled with basket and welded bowl lid;
- 2) Elimination of detergent recovery tube hole (where provided);
- 3) Diameter 30 cm opening instead of 28 cm;

The last two numbers of the Industrial Code (given on the rating plate) of the models relevant to this system will be 30 (e.g. 46268790030)

This modification has involved the use of a new table for the oscillating unit (1140240) in the documentation of the relevant models, and for the appliances the following parts have been used:

- OKO pump bowl tube (models code 092174);
- Truncated cone window seal 30cm > 28 cm (code 093345);
- Window seal fixing ring bowl side 30 cm (code 092155);
- Upper counterweight (code 094710);
- Front counterweight (code 094711);
- 400 litre drum agitator (code 097565);
- Shock absorber 100 N (code 097259) and 120N (code 055039);
- Bowl springs (codes 097753 and 096195)
- Air trap (code 092173);
- Pressure switch tube L = 505 mm (code 94746);
- Linear detergent container (code 097732);
- Product dispenser lid 1E 2U (code 096877 for Indesit and code 097340 for Ariston);
- Solenoid valve 1E 2U (110333 ex 093843);

·Pressure switches:

Code 096880 - Pressure switch one level 100-75 + overflow Rast 5;

Code 097735 - Pressure switch one level 185-80

Code 097746 - Pressure switch two levels 130-100 200-105 RST 5

·Resistance 1700/230 Rast. 2.5 (code 094715);

·Induction motors 2/16 poles (code 066087), 2/12 poles (code 075892) and 2/12 poles 60 Hz (099101);

·Eeproms - The new software for the 40 litre EVO washing machines can also be used on premodification appliances; it is managed with the same Sat codes as the previous software, which is being immediately replaced as the new models enter into production.

·Pulleys - The use of a single 40 litre bowl assembly in Assistance involves management of the pulleys used in production (097268 and 097267) and also those required for creating the various combinations (see fig. n1040305fig.01):

Code 064527 - Pulley D=280mm H=17 mm;

Code 084026 - Pulley D=210mm H=17mm.

NB: From serial no. 31103.0001, all EVO appliances are equipped with a 40 litre bowl with H=15 mm drum cross shaft which will be managed with the same SAT code (097236) as the 40 litre bowl with H=17 mm shaft until stocks last.

To create the various combinations, the following pulleys are required:

Code 097268 - Pulley D=280mm H=15 mm;

Code 097267 - Pulley D=210mm H=15mm.

Exceptions to this are models W93UK (23330) and W103UK (23334) which are equipped with a 46 litre bowl; therefore if the bowl needs replacing code 096198 with 20 mm pulley cross shaft must be used.

In production, pulley code 064527 (diameter D= 280 mm and central hole H= 17mm) is used; therefore, when replacing the bowl, code 097269 (diameter D= 280 mm and central hole H= 20mm) must be used.

·Belts - These vary according to the motor used in the appliance

Code 082318 - Belt EL1000 - 1195H8 X Commutator motors;

Code 081730 - Belt EL600 - 1106J4 X Induction motors 2/16

Code 081785 - Belt EL400 - 1094J4 X Induction motors 2/12

·Synchronous pre-chamber drain pump (code 085618).

·The pressure switch varies according to the motor used in the appliance:

Code 096880 - Pressure switch 1 Level commutator motor;

Code 097735 - Pressure switch 1 Level induction motor 2/12 - 2/16;

Code 097735 - Pressure switch 2 Levels induction motor 2/12 - 2/16;

In particular, the OKO system consists of a spherical plastic component inserted in the tube connecting the bowl to the drain pump. At the beginning of each wash cycle the machine fills water for 10 seconds and activates the drain pump for 2 seconds, thus creating a difference between the water level in the bowl and the water in the drain tube; this difference increases the upward thrust of the ball, closing the bowl-pump connection tube hermetically.

This offers the dual advantage of:

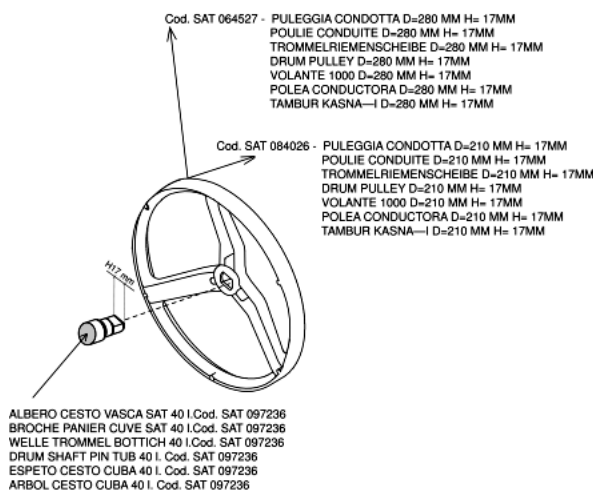
1) separating the wash water and the "dead" water in the drain hose, thus saving energy during the heating phase;

2) ensuring optimal use of all the detergent.

With the introduction of this new component, the detergent recovery tube is eliminated and the pump has only one inlet hole for water from the tank.

n1040372: Introduction of new shock absorbers and expanders.

FIG. n1040305fig01



From serial no. 50725.0001, new shock absorbers and expanders have been introduced.

New codes:

C00140670 - shock absorber

C00118593 - expander

Premodification codes

C00097259 - shock absorber

C00055037 - expander

The new items can also be used (but not separately) when replacing shock absorber 100N - C00097259; in this case, it will be necessary to replace both shock absorbers / expanders using kit C00140744, which is composed of two new shock absorbers and two new expanders.

List of appliances affected by this modification

- 22484AB84PT
- 23295W63IT
- 23308W93TEX
- 23310W83TEX
- 23317W83SP
- 23320W83TK
- 23321W83TTK
- 23330W93UK
- 23332W104TEX
- 23334W103UK
- 23335W113UK
- 23337W103TTK
- 23386W104NL
- 23781AB95EU
- 23879AB95AUS
- 23909AB63EX5060HZ
- 23910AL109K60HZ
- 24415W104SP
- 24600W103NL
- 24833W83DE
- 24834W104DE
- 25379W9521E
- 25474W104TBE
- 25885W63TAUS
- 25886W83TAUS
- 26878WA6IT

26879WA8IT  
26880WA10IT  
27094AB107PT  
27299AL102PFR  
27639WA6PT  
27640WA8PT  
27641WA10PT  
27647WE8EX  
27648WE10EX  
27699W85FR  
27700W105FR  
27757WP67EX  
27761WP100EX  
27914AB84IT  
28016WA105UK  
28119AB66IT  
28193W104TCH  
28305WE8IT.1  
28306WE10IT.1  
28382WAP61EX  
28383W84TTK  
28400W104TTK  
28479AV82TK  
28480AVL85TK  
28481AV102TK  
28482AVL105TK  
28484AVD8TK  
28485AVD10TK  
28626W101UK  
28674W83FR  
28676W107FR  
28876AL88EU  
28877AL109EU  
28940AVL68ITTE  
29378LNA1000FR  
29540W81EX  
29541W101EX  
29549WP80EX  
29999LISA100FR  
30000WI10FR  
30001WIL12FR  
30018WIL113UK  
30028WIE127UK  
30055AVL6EIT  
30056AVL8EIT  
30062AVL62EX60HZ  
30063AVL61EX115/60  
30092AVL66PIT  
30093AVL86PIT  
30139WI8FR  
30144WIL106IT  
30145WIL86IT  
30146WIL66IT  
30196WI101UK  
30197WI121UK  
30206AVL105SK  
30222WIE107IT

30223WIE87IT  
30228WIV80IT  
30229WIV60IT  
30233WIL105EU  
30234WIL85EU  
30235WILM64IT  
30331W12GE  
30352WI81EX  
30353WI82EX  
30354WIL85EX  
30355WI101EX  
30356WIL105EX  
30357AVL100PR  
30361AVL95AUS  
30443WIL126NL  
30444WIE128NL  
30455WIL105DE  
30459WIL125DE  
30460WIE127DE  
30484WI70TK  
30486WI80TK  
30488WI100TK  
30490WIL81TK  
30492WIL101TK  
30503WI62AUS  
30507WI82SING  
30513WI82AUS  
30515WI82EX60HZ  
30517WI102PL  
30520WI105EX  
30522WI102EX  
30523WI102AUS  
30525WI122EX  
30526WIL62EX  
30535WIL95KW  
30540WIL125EX  
30545WIE87EX  
30548WIE107EX  
30551WIE127EX  
30611AVL64EU  
30612AVL65PT  
31813WI8EU  
31922WI102EU  
31923WI122EU  
31969WI600IT  
31970AV102CSI  
32251WIL123DE  
32252WIL143DE  
32538WI102CH  
32539WIL125CH  
32571WIL146NLTE  
32572WIE148NLTE  
32859LISA111FR  
32860WI11FR  
32861WIL13FR  
33178WIL145DETE  
33179WIE147DETE

33180AVL145DETE  
33244AVL62EO  
33612AVL145EUTE  
33613WIL103IT  
33622WIL145EU  
33623WIE147EU  
33624WIL133UKTE  
33625WIE147UKTE  
33685AVL62KW  
33742WIA121UK  
33754WIA122EX  
33962WIL14NL  
33968AV6EU  
33979AVF10TK  
34056WIL146SPIT  
34214AVF8TK  
34238WIL14FRTE  
34412WIAV60IT  
34413WIA600EU  
34415WIAV80IT  
34438WIA60TK  
34439WIA82EX  
34440WIA80TK  
34442WIA82EX60HZ  
34443WIA8EU  
34444WIA100TK  
34445WIA102PL  
34446WIA102EX  
34447WIA101EU  
34448WIA102CH  
34449WIA121EU  
34450WIL8FR  
34451WIL11FR  
34452LISA10FR  
34453WIE12FR  
34471WIL1000OT  
34472WIL1200OT  
34479AVL14FR  
34483WIA101UK  
34486WIA101EX  
34507WIL62AUS  
34508WIL82AUS  
34509WIL102AUS  
34515WIU61CSI  
34516WIU81CSI  
34517WIU102CSI  
34907WIL103UK  
35010WIU82CSI  
35248WIL10FR  
35249WIE10FR  
35397WIL85EXTE  
35398AVL62EXTE  
35399AVL82EUTE  
35400AVL88ITTE  
35913AVF88EUTE  
35918AVL66PITTE  
35919AVL84EUTE

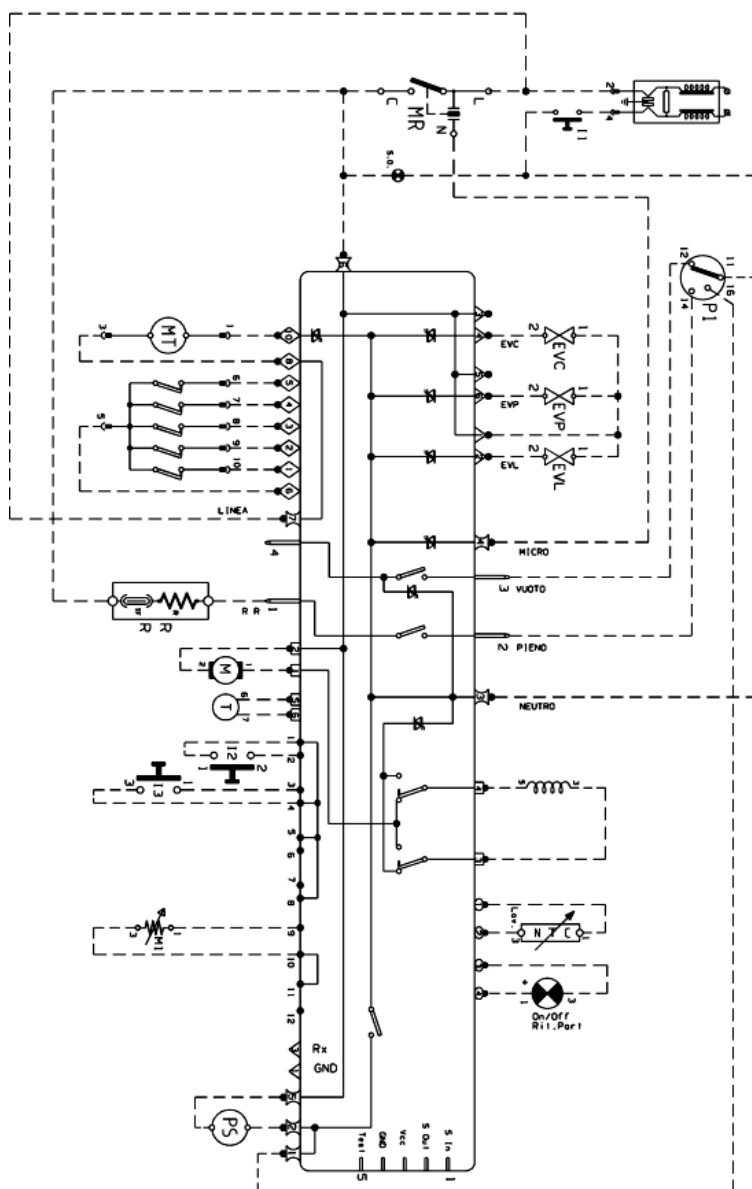
35920WIL105EXTE  
35921WIL85PLTE  
35974AV8IT  
35975AV10IT  
36241WIL125NL  
36243WIL124NL  
36536AVL95EXTE  
36537AVL125EUTE  
36593WIA110EU  
36594WIL105PLTE  
36595WIL126ITTE  
36596WIL113UKTE  
36684AVL105EU  
36685WIE107PLTE  
36768AVL120FRTE  
36887WIL106SPEU  
37014WILB12EU  
37335WIA64IT  
37732WIA9FR  
37916AVL82AG  
38059LISA11FR



Electric schemes and links

Cod. 16001409301

IDC



## Legend

Legend: 16001409301

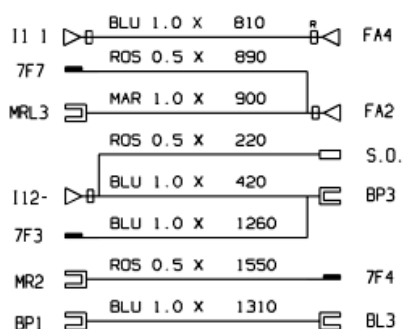
AQS	Aquastop electrovalve	Mzbn/MTA	zbn timer motor
B	Buzzer	N	Neutral or Terminal Board
BC	Blocco Cesto	NC	Spin cycle exclusion
BF	Terminal board contact, motor fan and dryer	P	Pressure switch
BP	Buzzer	P1	1st level pressure cut-off switch
C	Condensator	P2	2nd level pressure cut-off switch
CA	Condensator	PA	High speed potentiometer
DV	Switching device	PB	Low speed potentiometer
EF/CL	Electro-Valve Cold Water / Bleach	PL	Pure Wool
EF/L	Electro-Valve Cold Water / Wash	PM	Motor Thermoprotector
EF/P	Electro-Valve Cold Water / Prewash	PR	Timer programmer or Pressure switch
ER	Exclude Heating Element	PS	Drain pump
ET	Thermostat disactivation	R	Heating element
EV	Electrovalve	RE	Relay
EVA	Dryer electrovalve	RR	Heating element
EVC	Hot water electrovalve	RV	Speed regulator
EVF	Elettrovalvola acqua fredda	Ras/RA	Dryer heating element
EVL	Wash electrovalve	S	LED
EVP	Pre Wash electrovalve	SL	Line LED
FA	Antijamming filter	SO	Door LED
FD	Delicate drying cycle thermostat	SR	Heating LED
FE	Strong drying cycle thermostat	ST	Temperature selector
FRT	Thermofusible Heating Element	SV	Speed Selector for Spin
I	Inverter	T	Timer contacts
II...2...3..	Switches/switching devices	TA	Drying timer contacts
IA	Switch On/Off	TB	Low Temperature Thermostat
IC	Switch N.C. - 1/2 Load	TC	Spider wheel earth
ID	Switch display	TFL	Flange earth
IE	Water Saving Device	TG	Main earth
IF	Switch - Spin Reduction	TH	Thermostat
IP	Door switch	TH1	1st temperature thermostat
IR	Line switch	TH2	2nd temperature thermostat
IS	Water-stop	TH3	3rd temperature thermostat

L	Line or Lamp	THF	Operating thermostat
LB	Low Level	THR	Adjustable thermostat
LN	Normal Level	TM	Motor earth
LS	Pilot lamp	TMB	Main cabinet earth
M	Earth-symbol	TMP	Motor thermal protector
MC	Spin cycle motor	TMS	Thermostop
MI	MOTOR WITH PULLEY	TP	Thermal protector
ML	Wash cycle motor	TPS	Drain pump earth
MO	Terminal Board	TR	Heating element earth
MP	Door dip-switch	TS	Safety thermostat
MR	Thermal Lock	TT	Timer earthing connection
MT	Timer motor	TTH	Earthing Thermostat
MV	Motor fan	TV	Tank earth
MV -Ras	Dryer heating element	ZBN	Timer

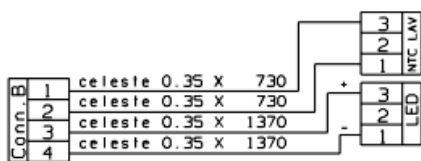
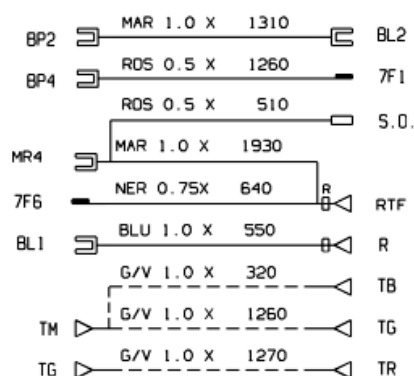
Electric schemes and links

Cod. 21500659403

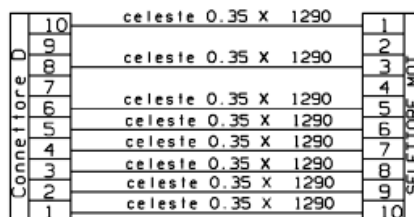
IDC



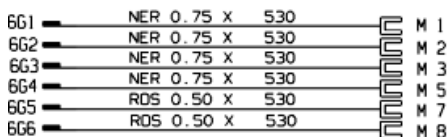
COMPLESSIVO A



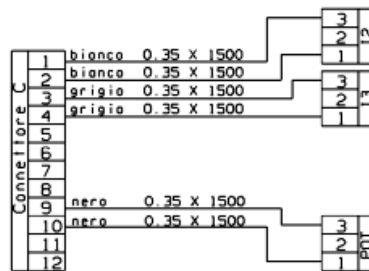
COMPLESSIVO C LED + SONDA



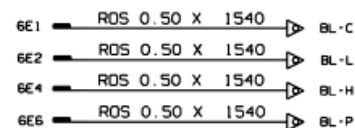
COMPLESSIVO B SELETTORE



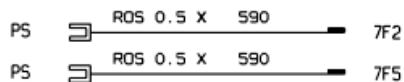
COMPLESSIVO D MOTORE



COMPLESSIVO G IM-2 PULSANTI



COMPLESSIVO M HOT COLD



COMPLESSIVO P POMPA DI SCARICO 50 Hz

## Legend

Legend: 21500659403

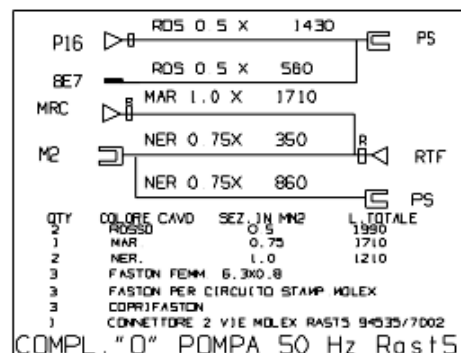
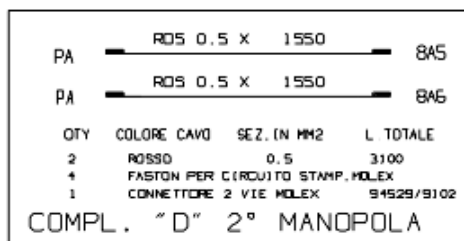
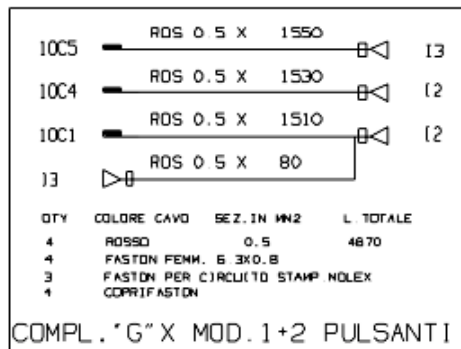
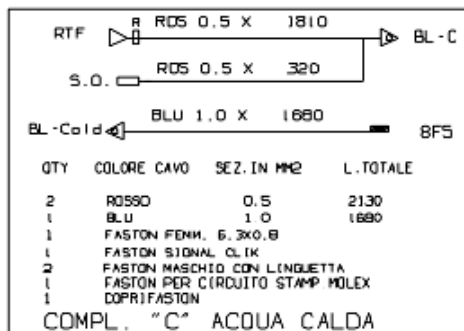
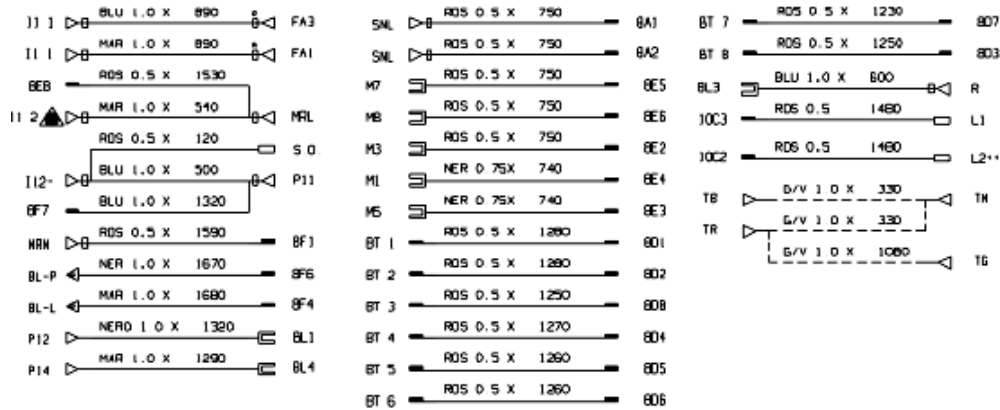
AQS	Aquastop electrovalve	Mzbn/MTA	zbn timer motor
B	Buzzer	N	Neutral or Terminal Board
BC	Blocco Cesto	NC	Spin cycle exclusion
BF	Terminal board contact, motor fan and dryer	P	Pressure switch
BP	Buzzer	P1	1st level pressure cut-off switch
C	Condensator	P2	2nd level pressure cut-off switch
CA	Condensator	PA	High speed potentiometer
DV	Switching device	PB	Low speed potentiometer
EF/CL	Electro-Valve Cold Water / Bleach	PL	Pure Wool
EF/L	Electro-Valve Cold Water / Wash	PM	Motor Thermoprotector
EF/P	Electro-Valve Cold Water / Prewash	PR	Timer programmer or Pressure switch
ER	Exclude Heating Element	PS	Drain pump
ET	Thermostat disactivation	R	Heating element
EV	Electrovalve	RE	Relay
EVA	Dryer electrovalve	RR	Heating element
EVC	Hot water electrovalve	RV	Speed regulator
EVF	Elettrovalvola acqua fredda	Ras/RA	Dryer heating element
EVL	Wash electrovalve	S	LED
EVP	Pre Wash electrovalve	SL	Line LED
FA	Antijamming filter	SO	Door LED
FD	Delicate drying cycle thermostat	SR	Heating LED
FE	Strong drying cycle thermostat	ST	Temperature selector
FRT	Thermofusible Heating Element	SV	Speed Selector for Spin
I	Inverter	T	Timer contacts
II...2...3..	Switches/switching devices	TA	Drying timer contacts
IA	Switch On/Off	TB	Low Temperature Thermostat
IC	Switch N.C. - 1/2 Load	TC	Spider wheel earth
ID	Switch display	TFL	Flange earth
IE	Water Saving Device	TG	Main earth
IF	Switch - Spin Reduction	TH	Thermostat
IP	Door switch	TH1	1st temperature thermostat
IR	Line switch	TH2	2nd temperature thermostat
IS	Water-stop	TH3	3rd temperature thermostat

L	Line or Lamp	THF	Operating thermostat
LB	Low Level	THR	Adjustable thermostat
LN	Normal Level	TM	Motor earth
LS	Pilot lamp	TMB	Main cabinet earth
M	Earth-symbol	TMP	Motor thermal protector
MC	Spin cycle motor	TMS	Thermostop
MI	MOTOR WITH PULLEY	TP	Thermal protector
ML	Wash cycle motor	TPS	Drain pump earth
MO	Terminal Board	TR	Heating element earth
MP	Door dip-switch	TS	Safety thermostat
MR	Thermal Lock	TT	Timer earthing connection
MT	Timer motor	TTH	Earthing Thermostat
MV	Motor fan	TV	Tank earth
MV -Ras	Dryer heating element	ZBN	Timer

Electric schemes and links

Cod. ce010100

CE010100



## Legend

Legend: ce010100

AQS	Aquastop electrovalve	Mzbn/MTA	zbn timer motor
B	Buzzer	N	Neutral or Terminal Board
BC	Blocco Cesto	NC	Spin cycle exclusion
BF	Terminal board contact, motor fan and dryer	P	Pressure switch
BP	Buzzer	P1	1st level pressure cut-off switch
C	Condensator	P2	2nd level pressure cut-off switch
CA	Condensator	PA	High speed potentiometer
DV	Switching device	PB	Low speed potentiometer
EF/CL	Electro-Valve Cold Water / Bleach	PL	Pure Wool
EF/L	Electro-Valve Cold Water / Wash	PM	Motor Thermoprotector
EF/P	Electro-Valve Cold Water / Prewash	PR	Timer programmer or Pressure switch
ER	Exclude Heating Element	PS	Drain pump
ET	Thermostat disactivation	R	Heating element
EV	Electrovalve	RE	Relay
EVA	Dryer electrovalve	RR	Heating element
EVC	Hot water electrovalve	RV	Speed regulator
EVF	Elettrovalvola acqua fredda	Ras/RA	Dryer heating element
EVL	Wash electrovalve	S	LED
EVP	Pre Wash electrovalve	SL	Line LED
FA	Antijamming filter	SO	Door LED
FD	Delicate drying cycle thermostat	SR	Heating LED
FE	Strong drying cycle thermostat	ST	Temperature selector
FRT	Thermofusible Heating Element	SV	Speed Selector for Spin
I	Inverter	T	Timer contacts
II...2...3..	Switches/switching devices	TA	Drying timer contacts
IA	Switch On/Off	TB	Low Temperature Thermostat
IC	Switch N.C. - 1/2 Load	TC	Spider wheel earth
ID	Switch display	TFL	Flange earth
IE	Water Saving Device	TG	Main earth
IF	Switch - Spin Reduction	TH	Thermostat
IP	Door switch	TH1	1st temperature thermostat
IR	Line switch	TH2	2nd temperature thermostat
IS	Water-stop	TH3	3rd temperature thermostat

L	Line or Lamp	THF	Operating thermostat
LB	Low Level	THR	Adjustable thermostat
LN	Normal Level	TM	Motor earth
LS	Pilot lamp	TMB	Main cabinet earth
M	Earth-symbol	TMP	Motor thermal protector
MC	Spin cycle motor	TMS	Thermostop
MI	MOTOR WITH PULLEY	TP	Thermal protector
ML	Wash cycle motor	TPS	Drain pump earth
MO	Terminal Board	TR	Heating element earth
MP	Door dip-switch	TS	Safety thermostat
MR	Thermal Lock	TT	Timer earthing connection
MT	Timer motor	TTH	Earthing Thermostat
MV	Motor fan	TV	Tank earth
MV -Ras	Dryer heating element	ZBN	Timer



## Legend

Legend: lg024601

AQS	Aquastop electrovalve	Mzbn/MTA	zbn timer motor
B	Buzzer	N	Neutral or Terminal Board
BC	Blocco Cesto	NC	Spin cycle exclusion
BF	Terminal board contact, motor fan and dryer	P	Pressure switch
BP	Buzzer	P1	1st level pressure cut-off switch
C	Condensator	P2	2nd level pressure cut-off switch
CA	Condensator	PA	High speed potentiometer
DV	Switching device	PB	Low speed potentiometer
EF/CL	Electro-Valve Cold Water / Bleach	PL	Pure Wool
EF/L	Electro-Valve Cold Water / Wash	PM	Motor Thermoprotector
EF/P	Electro-Valve Cold Water / Prewash	PR	Timer programmer or Pressure switch
ER	Exclude Heating Element	PS	Drain pump
ET	Thermostat disactivation	R	Heating element
EV	Electrovalve	RE	Relay
EVA	Dryer electrovalve	RR	Heating element
EVC	Hot water electrovalve	RV	Speed regulator
EVF	Elettrovalvola acqua fredda	Ras/RA	Dryer heating element
EVL	Wash electrovalve	S	LED
EVP	Pre Wash electrovalve	SL	Line LED
FA	Antijamming filter	SO	Door LED
FD	Delicate drying cycle thermostat	SR	Heating LED
FE	Strong drying cycle thermostat	ST	Temperature selector
FRT	Thermofusible Heating Element	SV	Speed Selector for Spin
I	Inverter	T	Timer contacts
II...2...3..	Switches/switching devices	TA	Drying timer contacts
IA	Switch On/Off	TB	Low Temperature Thermostat
IC	Switch N.C. - 1/2 Load	TC	Spider wheel earth
ID	Switch display	TFL	Flange earth
IE	Water Saving Device	TG	Main earth
IF	Switch - Spin Reduction	TH	Thermostat
IP	Door switch	TH1	1st temperature thermostat
IR	Line switch	TH2	2nd temperature thermostat
IS	Water-stop	TH3	3rd temperature thermostat

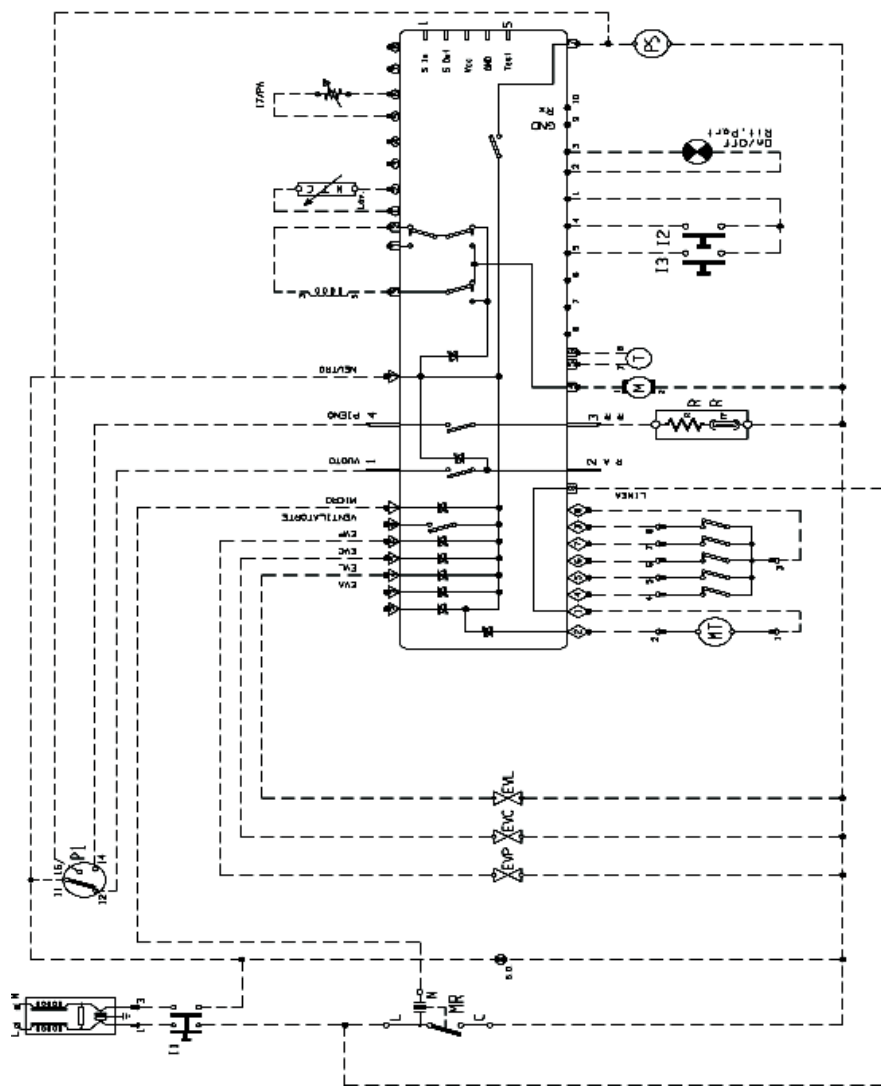
L	Line or Lamp	THF	Operating thermostat
LB	Low Level	THR	Adjustable thermostat
LN	Normal Level	TM	Motor earth
LS	Pilot lamp	TMB	Main cabinet earth
M	Earth-symbol	TMP	Motor thermal protector
MC	Spin cycle motor	TMS	Thermostop
MI	MOTOR WITH PULLEY	TP	Thermal protector
ML	Wash cycle motor	TPS	Drain pump earth
MO	Terminal Board	TR	Heating element earth
MP	Door dip-switch	TS	Safety thermostat
MR	Thermal Lock	TT	Timer earthing connection
MT	Timer motor	TTH	Earthing Thermostat
MV	Motor fan	TV	Tank earth
MV -Ras	Dryer heating element	ZBN	Timer

Electric schemes and links

Cod. se034700

SE034700

LEGENDA CONNETTORI  
 ○ + A  
 ● C  
 ◇ D  
 ▽ E  
 ▽ F



## Legend

Legend: se034700

AQS	Aquastop electrovalve	Mzbn/MTA	zbn timer motor
B	Buzzer	N	Neutral or Terminal Board
BC	Blocco Cesto	NC	Spin cycle exclusion
BF	Terminal board contact, motor fan and dryer	P	Pressure switch
BP	Buzzer	P1	1st level pressure cut-off switch
C	Condensator	P2	2nd level pressure cut-off switch
CA	Condensator	PA	High speed potentiometer
DV	Switching device	PB	Low speed potentiometer
EF/CL	Electro-Valve Cold Water / Bleach	PL	Pure Wool
EF/L	Electro-Valve Cold Water / Wash	PM	Motor Thermoprotector
EF/P	Electro-Valve Cold Water / Prewash	PR	Timer programmer or Pressure switch
ER	Exclude Heating Element	PS	Drain pump
ET	Thermostat disactivation	R	Heating element
EV	Electrovalve	RE	Relay
EVA	Dryer electrovalve	RR	Heating element
EVC	Hot water electrovalve	RV	Speed regulator
EVF	Elettrovalvola acqua fredda	Ras/RA	Dryer heating element
EVL	Wash electrovalve	S	LED
EVP	Pre Wash electrovalve	SL	Line LED
FA	Antijamming filter	SO	Door LED
FD	Delicate drying cycle thermostat	SR	Heating LED
FE	Strong drying cycle thermostat	ST	Temperature selector
FRT	Thermofusible Heating Element	SV	Speed Selector for Spin
I	Inverter	T	Timer contacts
II...2...3..	Switches/switching devices	TA	Drying timer contacts
IA	Switch On/Off	TB	Low Temperature Thermostat
IC	Switch N.C. - 1/2 Load	TC	Spider wheel earth
ID	Switch display	TFL	Flange earth
IE	Water Saving Device	TG	Main earth
IF	Switch - Spin Reduction	TH	Thermostat
IP	Door switch	TH1	1st temperature thermostat
IR	Line switch	TH2	2nd temperature thermostat
IS	Water-stop	TH3	3rd temperature thermostat

L	Line or Lamp	THF	Operating thermostat
LB	Low Level	THR	Adjustable thermostat
LN	Normal Level	TM	Motor earth
LS	Pilot lamp	TMB	Main cabinet earth
M	Earth-symbol	TMP	Motor thermal protector
MC	Spin cycle motor	TMS	Thermostop
MI	MOTOR WITH PULLEY	TP	Thermal protector
ML	Wash cycle motor	TPS	Drain pump earth
MO	Terminal Board	TR	Heating element earth
MP	Door dip-switch	TS	Safety thermostat
MR	Thermal Lock	TT	Timer earthing connection
MT	Timer motor	TTH	Earthing Thermostat
MV	Motor fan	TV	Tank earth
MV -Ras	Dryer heating element	ZBN	Timer